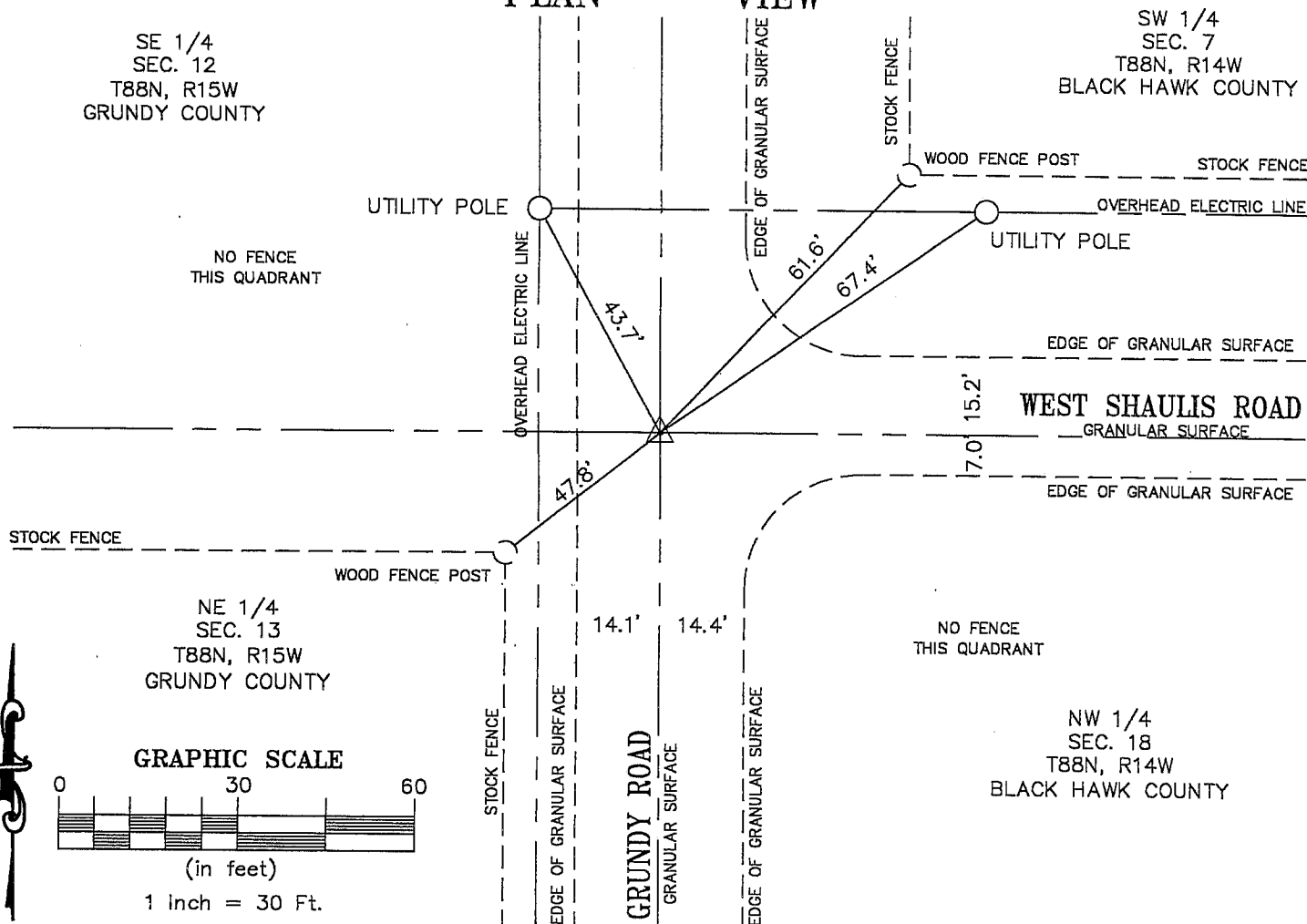


Kirk D. Eschliman, P.L.S. Iowa Lic. No. 9961, 723 Broadway Street, Waterloo, Iowa 50703 - Phone: 319-234-0509

UNITED STATES PUBLIC LAND SURVEY CORNER CERTIFICATE OF

LAND SURVEY MONUMENTS SITUATED IN SECTION 07, TOWNSHIP 88 NORTH
RANGE 14 WEST, OF THE FIFTH PRINCIPAL MERIDIAN, BLACK HAWK COUNTY, IOWA.
PREVIOUSLY RECORDED IN (NOT PREVIOUSLY RECORDED) (BOOK, PAGE, DOCUMENT NUMBER, ETC.) IN THE COUNTY RECORDER'S OFFICE.
(SHOW REASON FOR PREPARING THIS CERTIFICATE, THE EVIDENCE AND DETAILED PROCEDURES USED IN ESTABLISHING THE CORNER POSITIONS AND MONUMENTATION FOUND OR PLACED.)
MONUMENT DESCRIPTION AND REMARKS: FOUND 1/2" I.PIN WITHOUT ID CAP, 6" DEEP BELOW SURFACE
ALL MEASUREMENTS WERE TAKEN TO FACE OF OBJECTS

PLAN - VIEW



I HEREBY CERTIFY THAT THIS LAND SURVEYING DOCUMENT WAS PREPARED AND RELATED SURVEY WORK WAS WAS PERFORMED BY ME OR UNDER MY DIRECT PERSONAL SUPERVISION AND THAT I AM A DULY LICENSED LAND SURVEYOR UNDER THE LAWS OF THE STATE OF IOWA.

Kirk D. Eschliman DATE: 07/07/2004
KIRK D. ESCHLIMAN, P.L.S. IOWA LIC. NO. 9961
MY LICENSE RENEWAL DATE IS DECEMBER 31, 2005
PAGES OR SHEETS COVERED BY THIS SIGNATURE & SEAL: SHEET 1 OF 1

FOR: ROGER O GUTKNECHT TRUST
4635 GRUNDY ROAD
CEDAR FALLS

REQ. BY: ROGER GUTKNECHT
CEDAR FALLS



KESS & ASSOCIATES, INC.
PROFESSIONAL LAND SURVEYORS : 723 BROADWAY, WATERLOO, IOWA 50703-5811
DATE: 07/06/2004 C.A.D.D. FILE: 04B13CC1.DWG PROJECT NO.: 04B13

List of corners to be indexed:

Corners	Section	Township	Range
SW	07	T88N	R14W

SECTION 07

