

Number: 202000001293
Recorded: 7/22/2019 at 12:05:00.0 PM
County Recording Fee: \$7.00
Iowa E-Filing Fee: \$3.00
Combined Fee: \$10.00
Revenue Tax:
Sandie L. Smith, RECORDER
Black Hawk County, Iowa

Prepared by & Return to: Herold - Reicks Surveying, 2206 East Bremer Avenue, Waverly, IA 50677, Ph. 319-483-5187

United States Public Land Survey Corner Certificate

Land Survey Monument situated in
Section 7, Township 88 North, Range 14 West of the Fifth Principal Meridian, Black Hawk County, Iowa.
Not on file in the County Recorder's office.

This certificate is being prepared in compliance with Iowa Code Chapter 355.11 because:

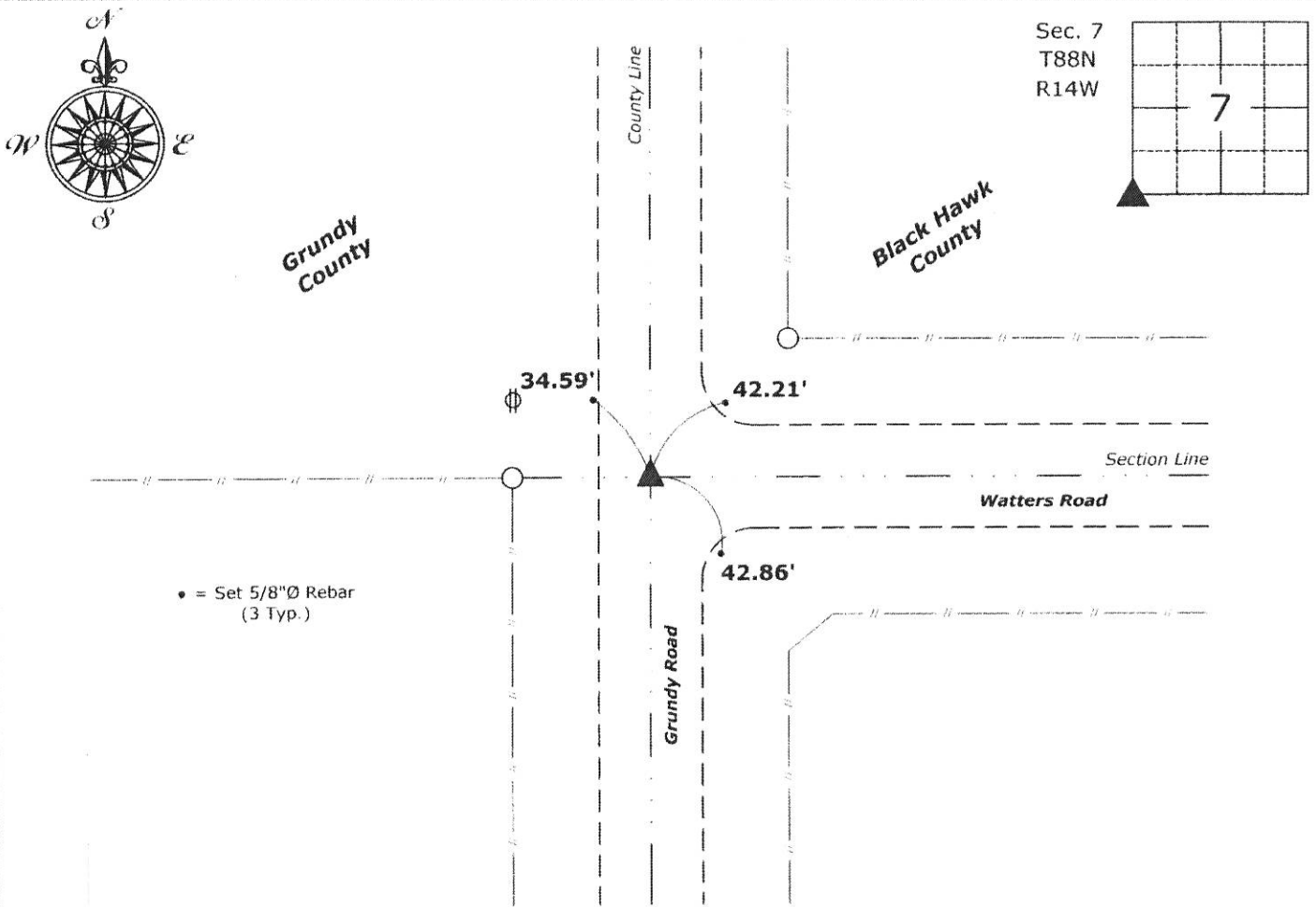
- ☒ There is no certificate on file for this corner.
☐ There are no longer three valid ties of record.
☐ There are changes to reference ties of record.
☐ There is change of monumentation of record.
☐ To clarify description of record monument (ties).

Monument Description and Remarks:

Southwest Corner: Found Standard Concrete Monument, 15" deep, with information obtained from the County Engineers office. Set 5/8"Ø x 12" Rebar w/2"Ø Aluminum Cap PLS 22468, above the found standard concrete monument to perpetuate the corner.

Plan View

(Show a minimum of three reference ties to durable physical objects, relevant monuments and physical conditions that will enable recovery of the corner.)



Southwest Corner of Section 7-88-14
Found Standard Concrete Monument, 15" deep,
Set 5/8"Ø x 12" Rebar w/2"Ø Aluminum Cap PLS 22468 above



I hereby certify that this land surveying document was prepared and the related survey work was performed by me or under my direct personal supervision and that I am a duly licensed Land Surveyor under the laws of the State of Iowa.
Isaiah M. Reicks 7-22-19
Isaiah M. Reicks Date:
License number 22468
My license renewal date is December 31, 2019.
Sheets covered by this seal: Individual sheet only

List Corner to be Indexed			
Corner	Section	Twp.	Range
SW	7	88	14
Project Number: 2018-566			
FB: Grundy 10, Pgs. 7-8			