

*Prepared by & Return to: Isaiah M. Reicks, 2206 East Bremer Avenue, Waverly, IA 50677, Ph. 319-483-5187*

Land Survey Monument situated in  
Section **7**, Township **88** North, Range **14** West of the Fifth Principal Meridian, **Black Hawk** County, Iowa.  
Not on file in the County Recorder's Office.

This certificate is being prepared in compliance with Iowa Code Chapter 355.11 because:

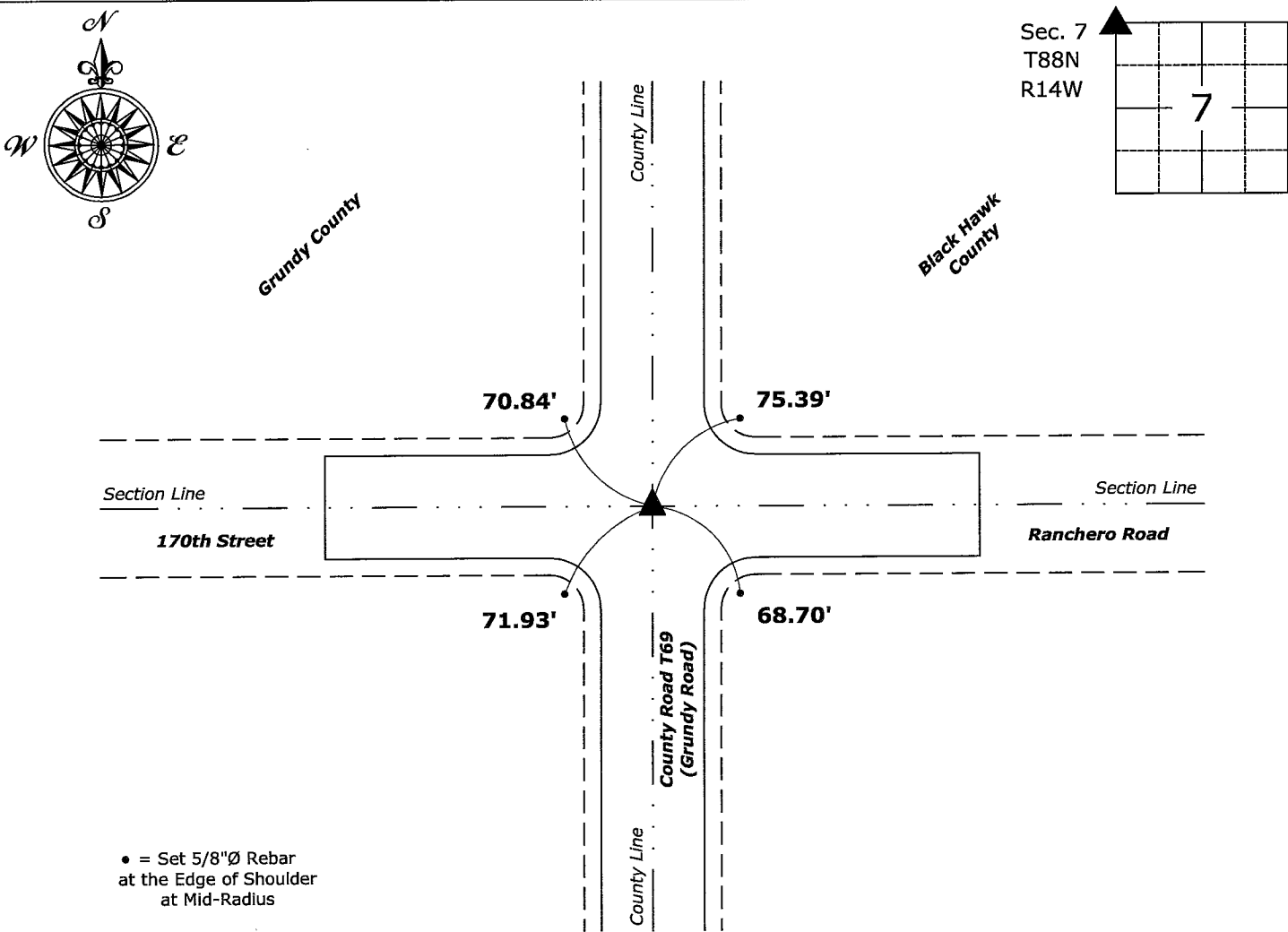
- ☒ There is no certificate on file for this corner.
  - ☐ There are no longer three valid ties of record.
  - ☐ There are changes to reference ties of record.
  - ☐ There is change of monumentation of record.
  - ☐ To clarify description of record monument (ties).

**Monument Description and Remarks:**

**Northwest Corner:** Found 1/2"Ø Iron Pin with information obtained from the previously recorded Section Corner Certificate, as recorded in Book 1, Page 124, on file in the Grundy County Recorder's Office. Set 1"Ø Bronze Survey Marker PLS 22468 with coordinates of the found location obtained prior to highway reconstruction. Corner reset in conjunction with Project No. LFM-5008--7X-07.

## Plan View

(Show a minimum of three reference ties to durable physical objects, relevant monuments and physical conditions that will enable recovery of the corner.)



**Northwest Corner of Section 7-88-14**  
Set 1"Ø Bronze Survey Marker PLS 22468



I hereby certify that this land surveying document was prepared and the related survey work was performed by me or under my direct personal supervision and that I am a duly licensed Land Surveyor under the laws of the State of Iowa.

Isaiah M. Reicks Date: 10-25-22

License number 22468  
My license renewal date is December 31, 2023.  
Sheets covered by this seal: Individual sheet only

List Corner to be Indexed			
Corner	Section	Twp.	Range
NW	7	88	14

Project Number: 2021-806
FB: 2021-806