



Doc ID: 003744940001 Type: GEN  
Recorded: 04/20/2009 at 08:57:57 AM  
Fee Amt: \$0.00 Page 1 of 1  
Instr# 200800024241  
Black Hawk County Iowa  
JUDITH A MCCARTHY RECORDER  
Book 1080 Page 33782 - 33782  
File **2009-00019758**

PREPARED BY: ~~A~~ BLACK HAWK COUNTY ENGINEERS OFFICE  
316 E. FIFTH STREET, ROOM 211 WATERLOO, IOWA 50703

PH.# (319) 833-3008  
FAX.# (319) 833-3139

SLSI 9-94  
CERT 12-96

UNITED STATES PUBLIC LAND SURVEY CORNER CERTIFICATE OF  
Land Survey Monuments situated in Section 06, Township 88 N,  
Range 14W, of the Fifth Principal Meridian, BLACK HAWK County, Iowa.  
Previously recorded in Fee Book 2004, Page 13169, in County Recorder's Office.  
(Show reason for preparing this certificate): The corner monument has been Replaced or Modified, per Ia. Code 355.11(1)(c)

(Evidence and detailed procedures used in establishing the corner position(s) and monumentation found or placed.)  
Monument Description and Remarks: N. 1/4 COR. FND. #7 RBR. PER CURRENT  
RECORD WITH SAID TIES TO "PK", BEING "TRUE POINT OF INTERSECTION" PER RECORD,  
CORNERS TEMP. REFERENCED PRIOR TO SCARIFICATION AND RUBBLIZATION OF EXISTING  
P.C.C. ROADWAY. AFTER RESURFACING PROJECT (7" DP. x 22' W. H.M.A. PAVEMENT ADDED),  
RECORD FND. #7 REBAR WAS RESET w/ 5/8" x 7" ± L. RBR. LOCATED @ ± NEW H.M.A. C.L.  
JOINT. ALSO SET S.M. SPK. @ 0.13' S. OF #5 REBAR TO REFERENCE AMENDED CORNER  
OF RECORD. S.M. SPK. LOCATED @ THE "TRUE POINT OF INTERSECTION", PER PREVIOUS  
HELLAND ENG. RECORD TIES, AND HEREIN REFERENCED PER THIS UPDATED RECORD.  
"NOTE STATE PLANE COORDINATE LOC. DENOTED REFLECTS LOCATION OF ORIG. #7 REBAR".

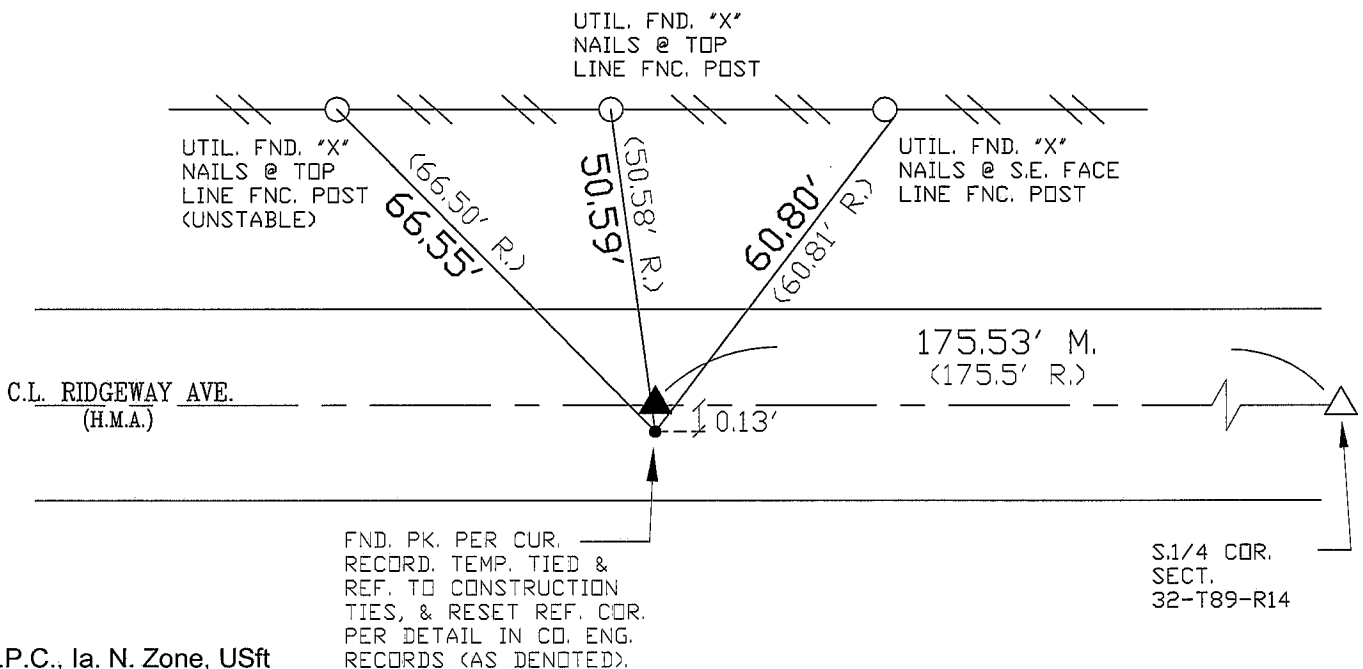
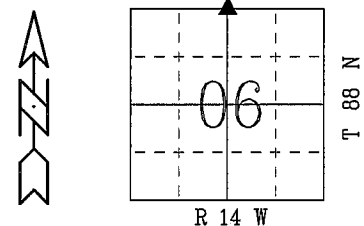
NOTE: ALL DISTANCES PLUMB/HORIZ.  
(H.D.), "UNLESS DENOTED".

### PLAN VIEW

BHco Hist. Ties: BK. #1001 (06) 88-14  
FIELD BOOK: BHco. #488 p.21

(Show a minimum of three reference ties to durable physical objects, relevant monuments and physical conditions that will enable recovery of the corner.)

- 1.) TIES PER EDM MEASURE IN NON-PRISM  
MODE, WHILE UTILIZING "INDIRECT/MLM"  
MEASURE.



S.P.C., Ia. N. Zone, USft

(Ref Fnd. #7 Rbr. Loc.)

N=3635689.182

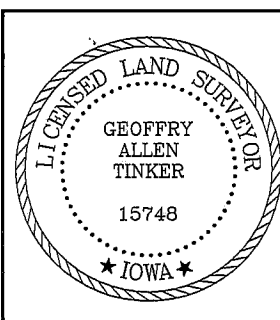
E=5184333.058'

(NAD83-2007 "BHco07", Static Obs.)

FIELD SURVEY: G.T. 07/10/08

PREPARED BY: C.W./J.Z./G.T. 3/2/09

### CERTIFICATION



I hereby certify that this land surveying document was prepared and the related survey work was performed by me or under my direct personal supervision and that I am a duly licensed Land Surveyor under the laws of the State of Iowa.

Geoffrey Allen Tinker 03/23/2009  
Geoffrey Allen Tinker (date)

License Number 15748

My license renewal date is December 31, 2010

Pages or sheets covered by this seal:

This Land Corner Certificate Only.

### LIST CORNERS TO BE INDEXED

Corner	Section -	Township -	Range
N. 1/4	06	88 N	14 W

### INDEX OF ABBREVIATIONS

(M) = "Measured" Dimension  
(P) = "Platted" Dimension  
(R) = "Record" Dimension  
(C) = "Calculated" Dimension  
(G) = Iowa Geodetic Survey  
(WPA) = Works Progress Admin. Survey  
(G) = per George Miller Survey (BHco Surveyor 1858-1860)  
(B) = per John Ball Survey (BHco Surveyor 1866-1891)  
(N) = per Nathan Barber Survey (BHco Surveyor 1906-1931)  
"NP" = Reflectorless EDM Meas.  
"MLM" = Indirect Measure  
"CM" = Concrete Monument  
"SM" = Survey Marker Spike/Tag