

Patricia A. Hess

BLACK HAWK COUNTY RECORDER

PAUL HELLAND

Paul H. Helland, 1107 Technology Parkway, Cedar Falls, Iowa 50613-6951, (319)-266-0161

UNITED STATES PUBLIC LAND SURVEY CORNER CERTIFICATE OF

LAND SURVEY MONUMENTS SITUATED IN SECTION NO. 6, TOWNSHIP NO. 88 NORTH, RANGE NO. 14 WEST OF THE FIFTH PRINCIPAL MERIDIAN, BLACK HAWK COUNTY, IOWA.

PREVIOUSLY RECORDED IN BOOK _____, PAGE _____.

(SHOW REASON FOR PREPARING THIS CERTIFICATE, THE EVIDENCE AND DETAILED PROCEDURES USED IN ESTABLISHING THE CORNER POSITIONS AND MONUMENTATION FOUND OR PLACED.)

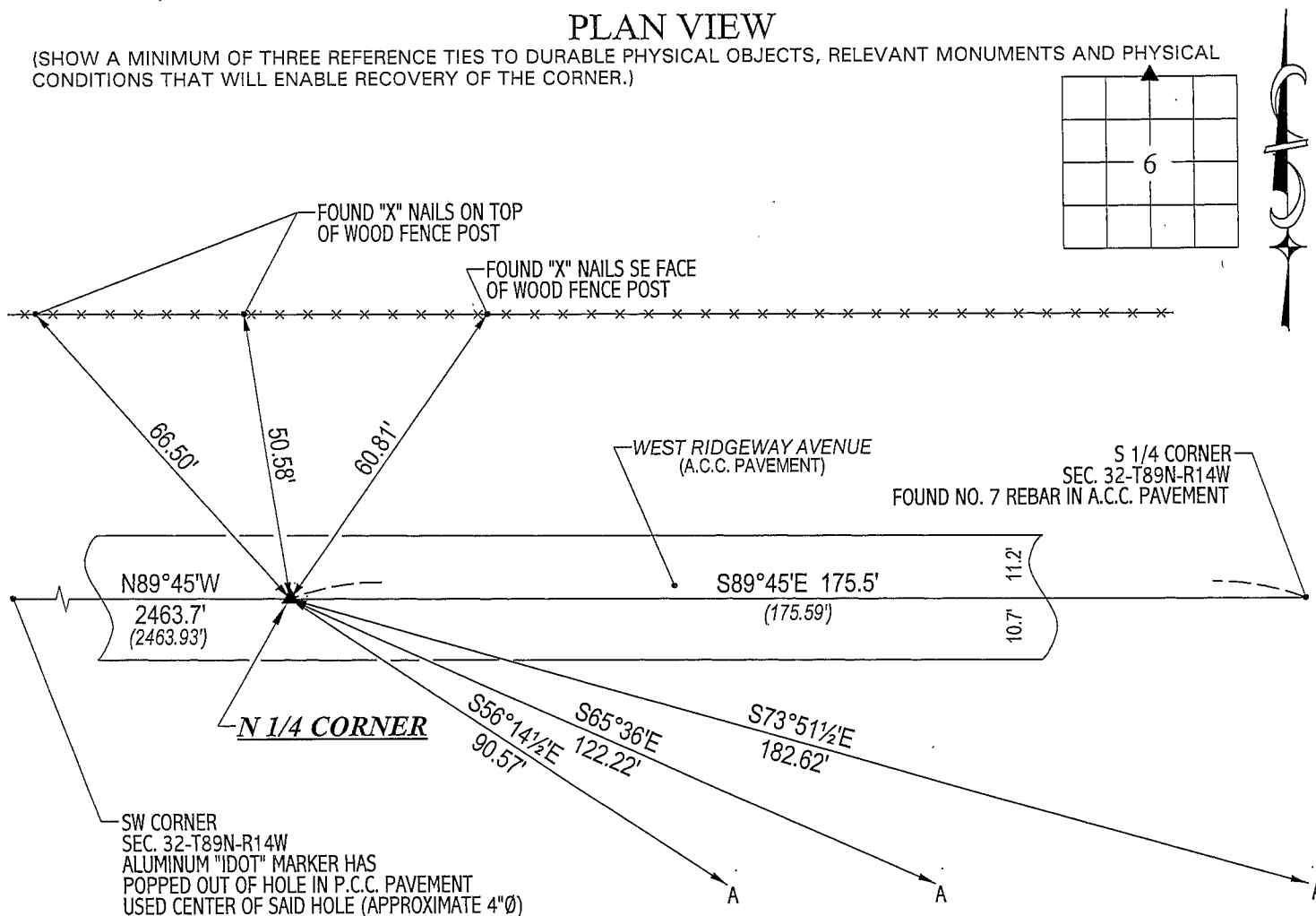
MONUMENT DESCRIPTION AND REMARKS:

NO CORNER CERTIFICATE ON FILE. SURVEY DONE IN NEFRL 1/4 OF SEC. 6-T88N-R14W.

→ N 1/4 CORNER: "IDOT" CORNER STONE SURVEY DATED 12/5/1977 CALLS FOR "FOUND LEAD PLUG". ROAD OVERLAYED w/A.C.C. PAVEMENT. FOUND NO. 7 REBAR IN A.C.C. PAVEMENT CORRESPONDING TO "IDOT" CORNER STONE SURVEY DATED 12/5/1977. SECTION 5-41 IN THE "MANUAL OF SURVEYING INSTRUCTIONS, 1973" STATES "A RECOVERED CLOSING CORNER NOT ACTUALLY LOCATED ON THE LINE THAT WAS CLOSED UPON WILL DETERMINE THE DIRECTION OF THE CLOSING LINE, BUT NOT ITS LEGAL TERMINUS. THE CORRECT POSITION IS AT THE TRUE POINT OF INTERSECTION OF THE TWO LINES". SET "MAG" NAIL IN A.C.C. PAVEMENT @ THE TRUE POINT OF INTERSECTION ON A STRAIGHT LINE BETWEEN THE SW CORNER & S 1/4 CORNER OF SEC. 32-T89N-R14W AND A STRAIGHT LINE BETWEEN SAID FOUND NO. 7 REBAR & THE CENTER OF SEC. 6-T88N-R14W (CALCUTED BEARING PER SAID "IDOT" SURVEY). SAID "MAG" NAIL IS S00°00¼'W 0.16' FROM SAID NO. 7 REBAR (NOW REFERRED TO AS AN AMENDED MONUMENT).

PLAN VIEW

(SHOW A MINIMUM OF THREE REFERENCE TIES TO DURABLE PHYSICAL OBJECTS, RELEVANT MONUMENTS AND PHYSICAL CONDITIONS THAT WILL ENABLE RECOVERY OF THE CORNER.)



NOTE: ALL TIES ARE TO SET "MAG" NAIL

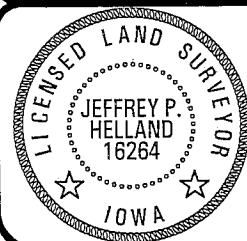
A - NO. 4 REBAR w/ORANGE CAP #16264



HELLAND ENGINEERING & SURVEYING, LTD.
1107 Technology Parkway
Cedar Falls, Iowa 50613-6951
(319)-266-0161

(00.00') - PER "IDOT" CORNER STONE SURVEY DATED 12/5/1977.

FILE NAME: 03-311C3.DRG



I hereby certify that this land surveying document was prepared and the related survey work was performed by me or under my direct personal supervision and that I am a duly licensed Land Surveyor under the laws of the State of Iowa.

Jeffrey P. Helland 10/7/03

Jeffrey P. Helland
License Number 16264

My license renewal date is December 31, 2003.
All pages or sheets are covered by this seal except:

LIST CORNERS TO BE INDEXED
CORNER SECTION TOWNSHIP RANGE
N 1/4 CORNER 6 88N 14W