

MISC
INDEX OF
MARGIN
PROOF
COMPARE

BLACK HAWK COUNTY IOWA:SS
FILED FOR RECORD Aug 7, 2001 at
4:00 P.M. AND RECORDED IN BOOK 343
OF MISC AT PAGE 508

003586

Patricia A. Sess

RECORDER

FEE 1-5.00/

PAUL HELLAND

Paul H. Helland, 1107 Technology Parkway, Cedar Falls, Iowa 50613-6951, (319)-266-0161

UNITED STATES PUBLIC LAND SURVEY CORNER CERTIFICATE OF

LAND SURVEY MONUMENTS SITUATED IN SECTION NO. 3, TOWNSHIP NO. 88 NORTH, RANGE
NO. 14 WEST OF THE FIFTH PRINCIPAL MERIDIAN, BLACK HAWK COUNTY, IOWA.

PREVIOUSLY RECORDED IN BOOK _____, PAGE _____.

(SHOW REASON FOR PREPARING THIS CERTIFICATE, THE EVIDENCE AND DETAILED PROCEDURES USED IN ESTABLISHING THE
CORNER POSITIONS AND MONUMENTATION FOUND OR PLACED.)

MONUMENT DESCRIPTION AND REMARKS:

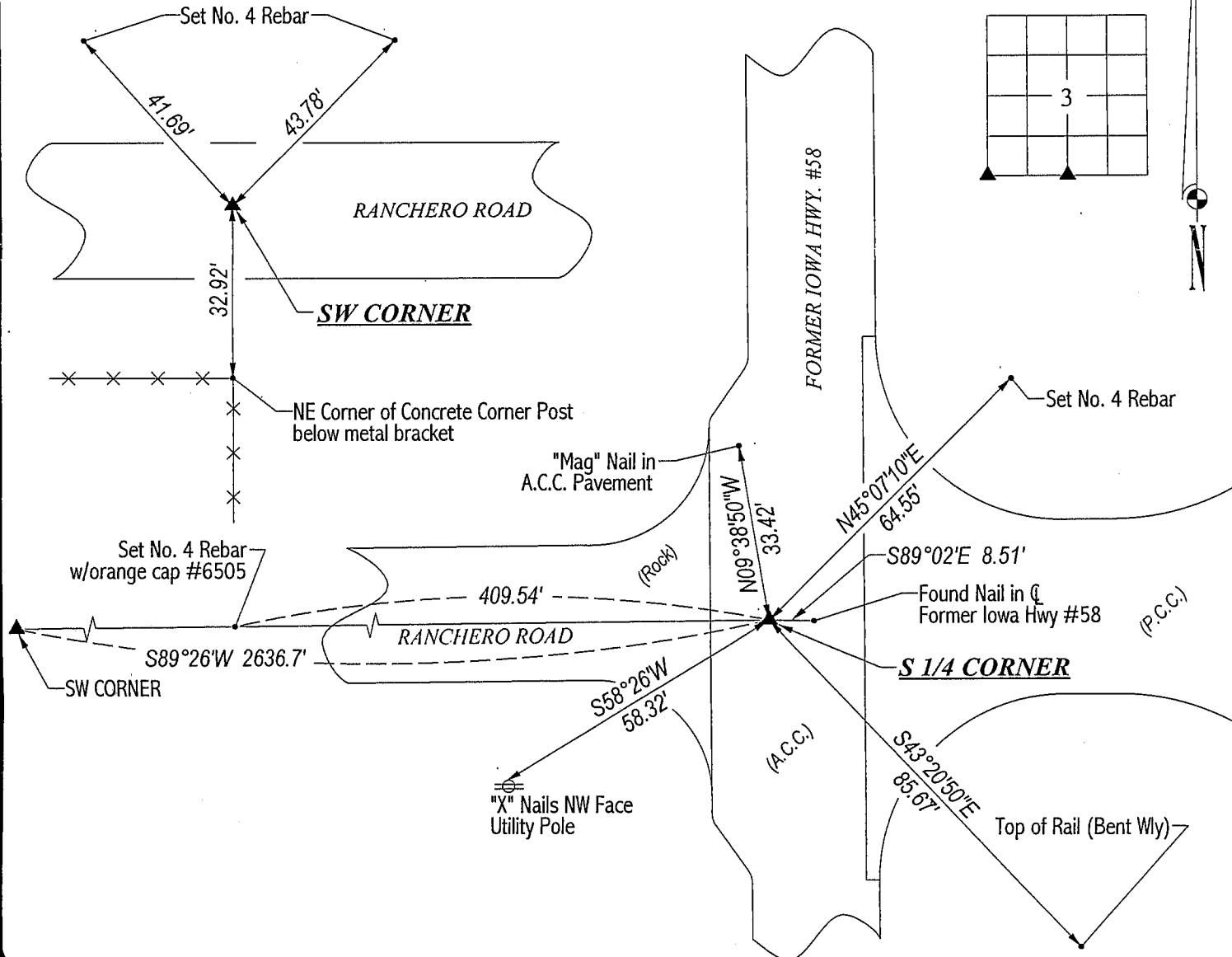
SURVEY DONE IN SW 1/4 OF SEC. 3-T88N-R14W.

SW CORNER: IDOT reference ties call for an Iron pin over a found pinched pipe 12" deep. Found pinched pipe 0.6' deep.

S 1/4 CORNER: IDOT reference ties call for a lead plug 8.6' West of the centerline of former Iowa #58. Found lead plug in P.C.C.
pavement 0.2' below surface of A.C.C. overlay. Set "Mag" nail in lead plug for more precise location and magnetic detection.

PLAN VIEW

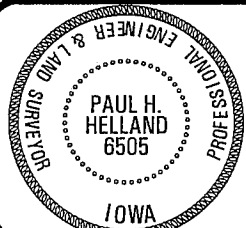
(SHOW A MINIMUM OF THREE REFERENCE TIES TO DURABLE PHYSICAL OBJECTS, RELEVANT MONUMENTS AND PHYSICAL
CONDITIONS THAT WILL ENABLE RECOVERY OF THE CORNER.)



HELLAND ENGINEERING & SURVEYING, LTD.

1107 Technology Parkway
Cedar Falls, Iowa 50613-6951
(319)-266-0161

FILE NAME: 01-195CC.DRG



I hereby certify that this land surveying document was prepared
and the related survey work was performed by me or under my
direct personal supervision and that I am a duly licensed Land
Surveyor under the laws of the State of Iowa.

Paul H. Helland 8/7/01
Paul H. Helland
License Number 6505

My license renewal date is December 31, 2001.
All pages or sheets are covered by this seal except:

LIST CORNERS TO BE INDEXED

CORNER	SECTION	TOWNSHIP	RANGE
SW CORNER	3	88N	14W
S 1/4 CORNER	3	88N	14W

BOOK 0343 508