

Doc ID: 004646490001 Type: GEN
Kind: CORNER
Recorded: 12/02/2011 at 10:30:10 AM
Fee Amt: \$7.00 Page 1 of 1
Black Hawk County Iowa
JUDITH A MCCARTHY RECORDER
File **2012-00010069**

Recorded By: Michael R. Fagle, P.L.S. AECOM, 501 Sycamore St., Suite 222, Waterloo, Iowa 50703 1-319-232-6531

**UNITED STATES PUBLIC LAND SURVEY CORNER CERTIFICATE
OF**

Land Survey Monuments situated in Section 3, Township 88 North,
Range 14 West, of the Fifth Principal Meridian, Black Hawk
County, Iowa. Previously recorded in *** See Below **FEE BK. 2006-00530** (yrt.)
in County Engineer's Office. (Book, Page, Document Number, etc.)

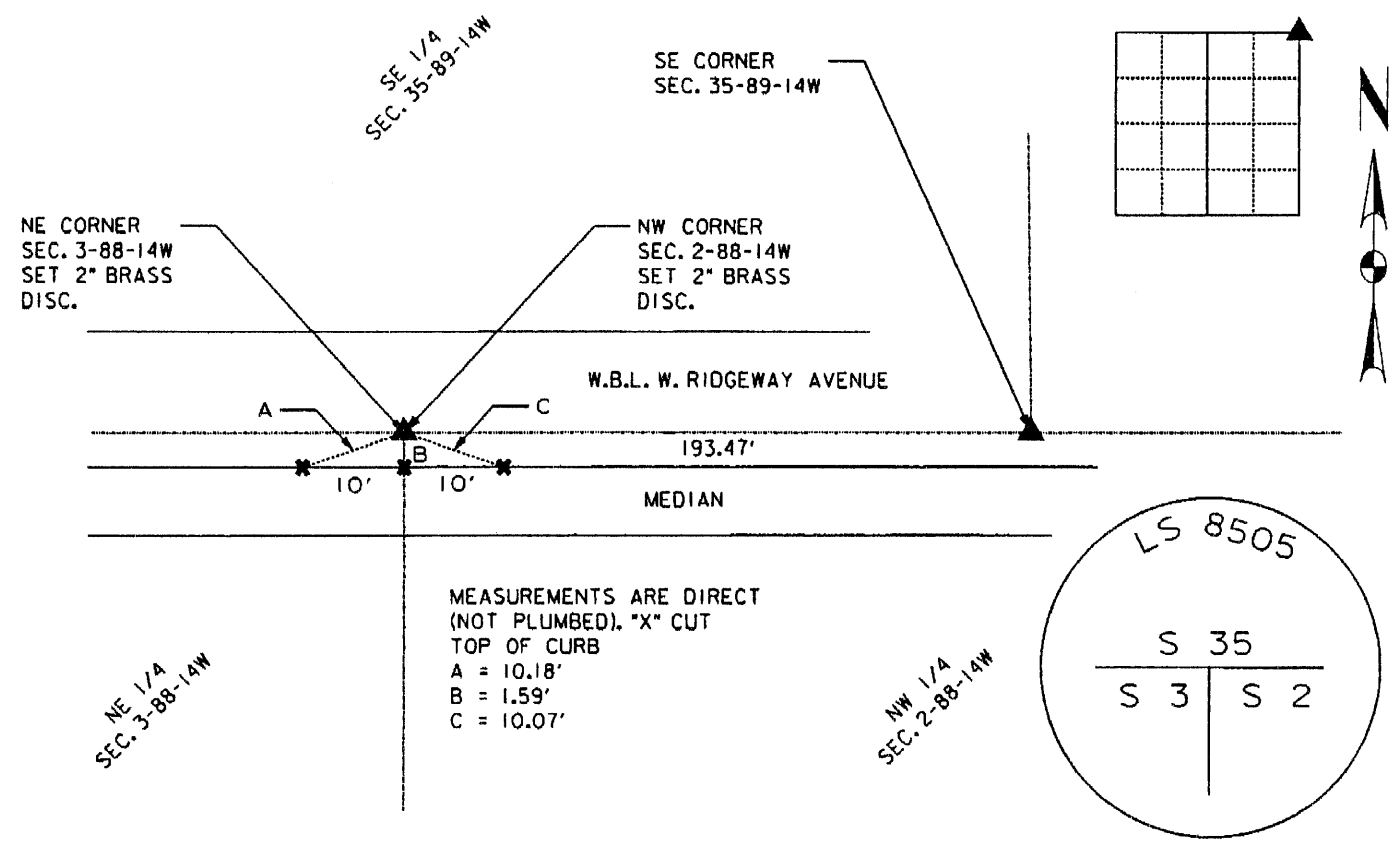
(Show reason for preparing this certificate, the evidence and detailed procedures used in establishing the corner positions and monumentation found or placed.)

Monument Description and Remarks: Found PK Nail after the Asphalt Surface was removed dug down 2.2' and found SCM. After the construction was completed on the City of Cedar Falls Ridgeway Avenue Reconstruction Project (RC-000-1913) a 2" Brass Disc with Magnetic Washer was set. Stamped LS 8505 - S 35 - S 3 - S 2.

*** Section Corner Tie Book 1018 page 5 in the Black Hawk County Engineer's Office

PLAN - VIEW

(Show a minimum of three reference ties to durable physical objects, relevant monuments and physical conditions that will enable recovery of the corner.)



| | | | | |
|---------------------------------------|--|--|------------|--|
| | I hereby certify that this Land Surveying document was prepared by me or under my direct personal supervision and that I am a duly Licensed Land Surveyor under the laws of the State of Iowa. | | | |
| | <i>Michael R. Fagle</i> | | 12-01-2011 | |
| | MICHAEL R. FAGLE | | Date | |
| | License number 8505 | | | |
| | My license renewal date is December 31, 2012 | | | |
| Pages or sheets covered by this seal: | | | | |
| <u>THIS SHEET</u> | | | | |

| Corners | Section | Twp | Range |
|------------------|---------|--------|--------|
| Northeast Corner | 3 | T 88 N | R 14 W |
| Northwest Corner | 2 | T 88 N | R 14 W |