



Doc ID: 005379930001 Type: GEN
Kind: CORNER
Recorded: 01/13/2014 at 10:37:43 AM
Fee Amt: \$7.00 Page 1 of 1
Black Hawk County Iowa
JUDITH A MCCARTHY RECORDER

File 2014-00013642

WAYNE CLAASSEN ENGINEERING AND SURVEYING, INC.
P.O. BOX 898 WATERLOO, IOWA 50704-0898

PHONE: (VOICE) 319-235-6294
(FAX) 319-235-0028

UNITED STATES PUBLIC LAND SURVEY CORNER CERTIFICATE

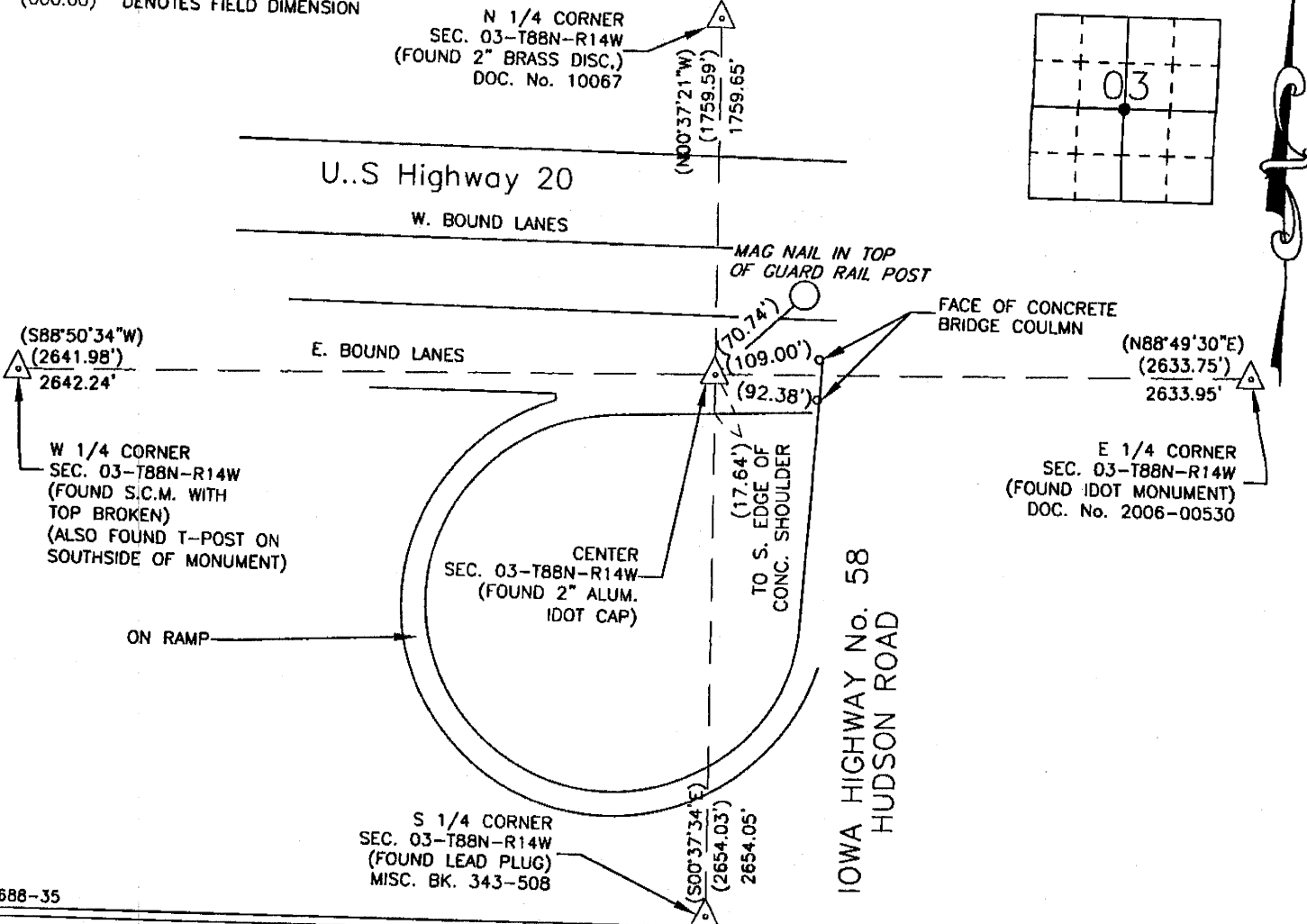
Land Survey Monuments situated in Section 03, Township 88 North, Range 14 West, of the Fifth Principal Meridian, Black Hawk County, Iowa.
Previously recorded in _____ in County Recorder's Office.
(book, page, document number, etc.)

Monument Description and Remarks

No field notes from Black Hawk County Engineer's Office available. IDOT corner stone survey dated December 05, 1977 states "Found Conc. Monument" at corner. IDOT corner stone survey dated January 30, 1980 states "Found Std. Conc. Monument" at corner. Kess & Associates survey dated 11-20-2006, recorded in Doc. No. 2007-12996, states "FD. IDOT MONUMENT IN PAVEMENT". Found 2" Aluminum IDOT cap in pavement. This certificate was filed because there is no certificate on file.

000.00 DENOTES RECORD DIMENSION FROM
(000.00) IDOT CORNER STONE SURVEY 1-30-1980
DENOTES FIELD DIMENSION

PLAN - VIEW



688-35

I hereby certify that this land surveying document was prepared and the related survey work was performed by me or under my direct personal supervision and that I am a duly Licensed Land Surveyor under the laws of the State of Iowa.

Signature: David L. Scheil
David L. Scheil, L.S.
Date: Jan 10, 2014 Lic. No. 16775

Pages or Sheets Covered by this Seal: THIS SHEET ONLY.
My license renewal date is December 31, 2014

SEAL

List Corners to be Indexed

Corners	Section	Twp	Range
CENTER,	03	88 N	14 W

