

Reserved for County Recorder's Use.

2025-16470

RECORDED: 11/10/2025 09:39:54 AM

RECORDING FEE: \$7.00

REVENUE TAX: \$

COMBINED FEE: \$7.00

SANDIE L. SMITH, RECORDER
BLACK HAWK COUNTY, IOWA

Kyle J. Helland, 6109 Chancellor Drive, Cedar Falls, Iowa 50613-6916, (319)-266-0161

UNITED STATES PUBLIC LAND SURVEY CORNER CERTIFICATE OF

LAND SURVEY MONUMENTS SITUATED IN SECTION NO. 2, TOWNSHIP NO. 88 NORTH, RANGE NO. 14 WEST OF THE FIFTH PRINCIPAL MERIDIAN, BLACK HAWK COUNTY, IOWA.

PREVIOUSLY RECORDED IN N/A.

(SHOW REASON FOR PREPARING THIS CERTIFICATE, THE EVIDENCE AND DETAILED PROCEDURES USED IN ESTABLISHING THE CORNER POSITIONS AND MONUMENTATION FOUND OR PLACED.)

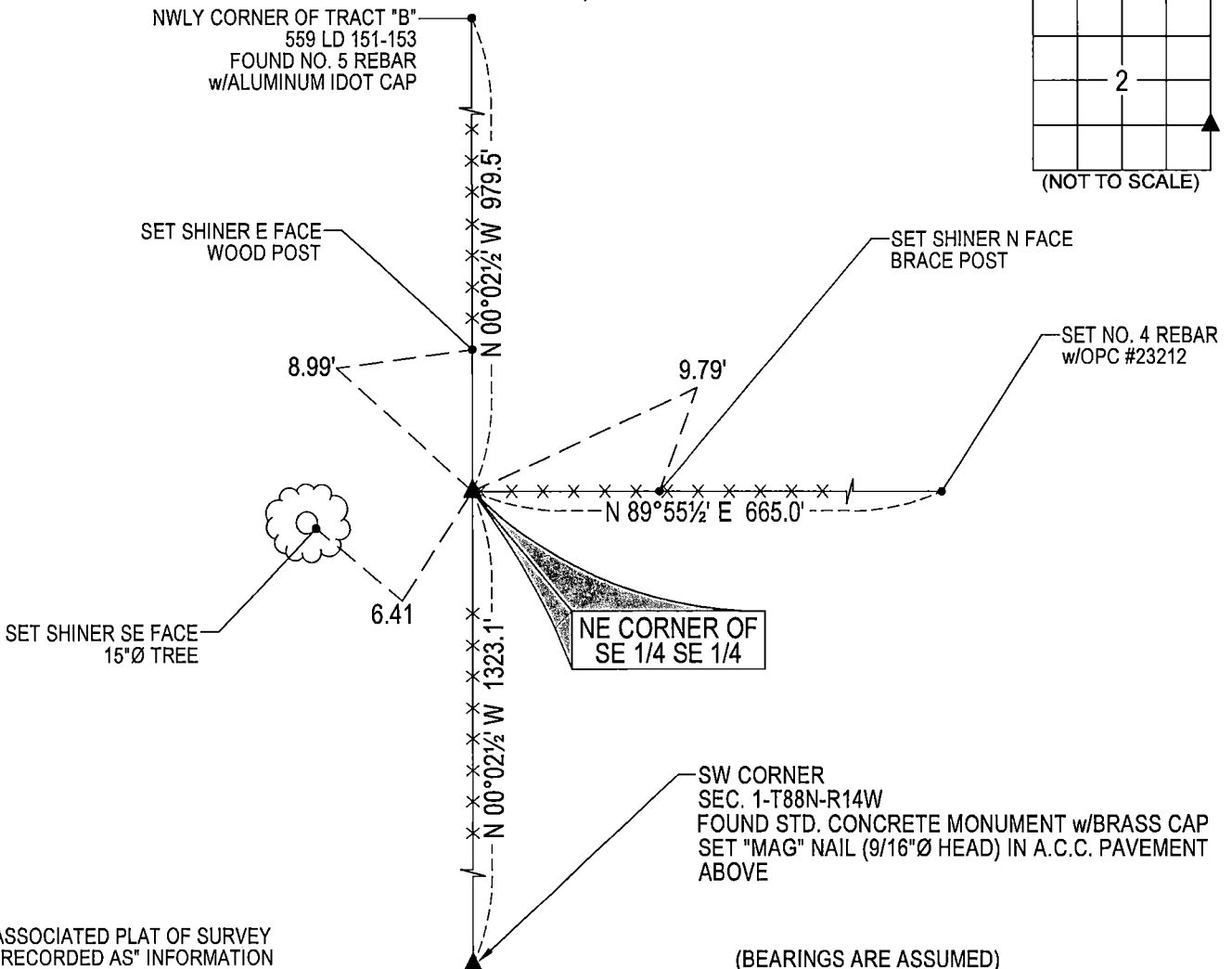
MONUMENT DESCRIPTION AND REMARKS:

NO USPLSCC ON FILE. SURVEY COMPLETED IN THE SW 1/4 OF SEC. 1-T88N-R14W.

→ **NE CORNER OF THE SE 1/4 SW 1/4:** NO BLACK HAWK COUNTY ENGINEER TIES ARE AVAILABLE. IDOT R.O.W. DATED 12/05/1979 559 LD 153 CALLS FOR CORNER [DOES NOT STATE WHAT WAS FOUND OR SET]. SEARCHED AREA WITH MAGNETIC DETECTOR AND PROBED AROUND CORNER POST WITH FENCING RUNNING NORTH, SOUTH AND EAST, NOTHING FOUND. THEREFORE SET NO. 4 REBAR w/OPC #23212 ON A LINE BETWEEN NORTHWESTERLY CORNER OF TRACT "B" PER 559 LD 151-153 AND THE SOUTHEAST CORNER OF SAID SECTION 2-T88N-R14W AT RECORDED DISTANCE FROM SAID NORTHWESTERLY CORNER OF TRACT "B". SAID SET CORNER FALLS ON NORTH SIDE OF CORNER POST WITH FENCING RUNNING NORTH, SOUTH & EAST. FENCING IS IN POOR CONDITION. UTILIZED SAID SET NO. 4 REBAR w/OPC #23212 AS CORRECT CORNER.

PLAN VIEW

(SHOW A MINIMUM OF THREE REFERENCE TIES TO DURABLE PHYSICAL OBJECTS, RELEVANT MONUMENTS AND PHYSICAL CONDITIONS THAT WILL ENABLE RECOVERY OF THE CORNER.)



SEE ASSOCIATED PLAT OF SURVEY FOR "RECORDED AS" INFORMATION

(BEARINGS ARE ASSUMED)



HELLAND ENGINEERING & SURVEYING, LTD.
6109 Chancellor Drive
Cedar Falls, Iowa 50613-6916
(319)-266-0161

BRASS TAG = 4d. NAIL & 13/16"Ø BRASS TAG DRAWN BY: CDR
SHINER = 1"Ø STEEL SHINER w/MASONRY NAIL
OPC = PLASTIC CAP (O=ORANGE, R=RED, Y=YELLOW)
(00) RECORDED AS FILE NAME: 25-208-54.DWG



I hereby certify that this land surveying document was prepared and the related survey work was performed by me or under my direct personal supervision and that I am a duly licensed Professional Land Surveyor under the laws of the State of Iowa.
Kyle J. Helland
Kyle J. Helland
License Number 23212
My license renewal date is December 31, 2025.
All pages or sheets are covered by this seal except:

LIST CORNERS TO BE INDEXED

CORNER	SECTION / TOWNSHIP / RANGE
NE COR. SE 1/4 SE 1/4	2 88N 14W
SE COR. NE 1/4 SE 1/4	2 88N 14W
SW COR. NW 1/4 SW 1/4	1 88N 14W
NW COR. SW 1/4 SW 1/4	1 88N 14W