

PREPARED BY / RETURN TO: MIRANDA K. EILDERS IOWA DEPARTMENT OF TRANSPORTATION 428 43rd ST. SW MASON CITY, IA 50401 641-423-7584

UNITED STATES PUBLIC LAND SURVEY CORNER CERTIFICATE  
OF

Land Survey Monuments situated in Section 02, Township 88N, Range 14W  
of the Fifth Principal Meridian, BLACK HAWK County, Iowa.

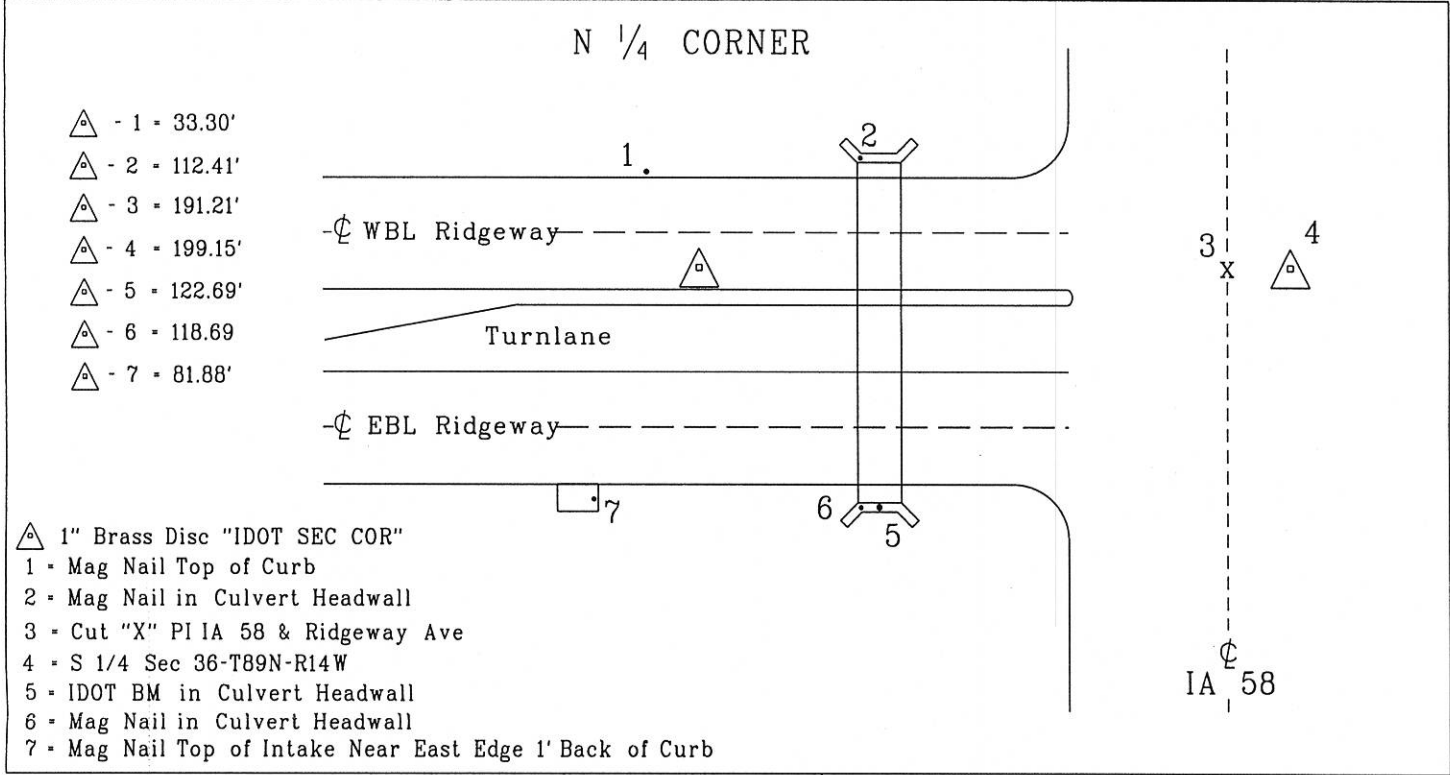
Previously recorded in Fee Book 2006, Page 532 in County Recorder's Office.  
(book, page, document number, etc.)

(Show reason for preparing this certificate, the evidence and detailed procedures used in establishing the corner positions and monumentation found or placed.)

Monument Description and Remarks:  
North 1/4 Corner = Replaced previously found 2 1/2" IDOT Aluminum Monument (damaged) with a 1" Brass Disc "IDOT SEC COR" in PCC Pavement to perpetuate location of corner per previous cert: Fee Book 2006, Page 532. Reason for cert: Change to monument.

PLAN - VIEW

(Show a minimum of three reference ties to durable physical objects, relevant monuments and physical conditions that will enable recovery of the corner.)



I hereby certify that this land surveying document was prepared and the related survey work was performed by me or under my personal supervision and that I am duly licensed professional Land Surveyor under the laws of the state of Iowa.

Miranda K. Eilders  
License number 22293  
My License renewal date is December 31, 2019  
Pages or sheets covered by this seal.

List Corners to be Indexed			
Corner	Section	Township	Range
N 1/4 COR.	02	88N	14W

drawn by: ME  
tied by: DM  
right-of-way

