

UNITED STATES PUBLIC LAND SURVEY CORNER CERTIFICATE

OF

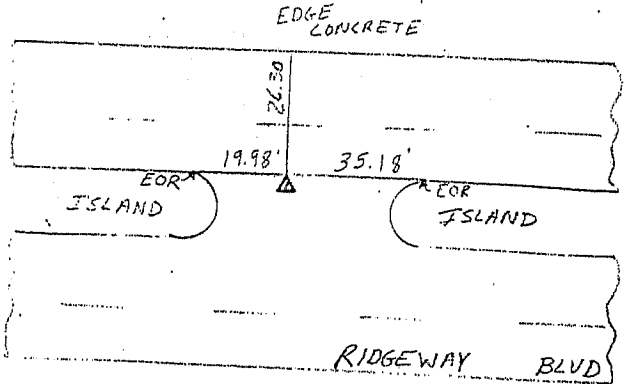
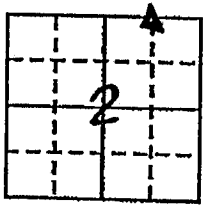
Land Survey Monuments situated in Section 2, Township 88 N, Range 14 W, of the Fifth Principal Meridian, BLACK HAWK County, Iowa. Previously recorded in _____ in County Recorder's Office.

(Show reason for preparing this certificate, the evidence and detailed procedures used in establishing the corner positions and monumentation found or placed.)

Monument Description and Remarks: FOUND IOWA DOT LAND COR. MONUMENT

PLAN - VIEW

(Show a minimum of three reference ties to durable physical objects, relevant monuments and physical conditions that will enable recovery of the corner.)

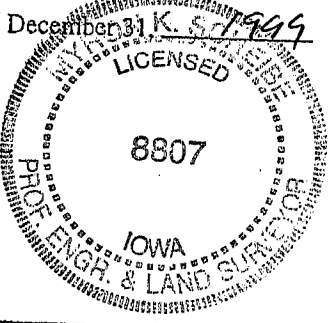


I hereby certify that the survey work was completed and this land surveying document was prepared by me or under my direct personal supervision and that I am a duly registered land surveyor under the laws of the state of Iowa

Signature: Myron Scheibe
Name typed or printed: Myron Scheibe
Date: 10-15-98 Reg. No. 8807

My registration renewal date is December 31, 2000

SEAL



Corners	List Corners to be Indexed	Section	Tw	Range
NE COR		2	88 N	14 W
W 1/2 - NE 1/4				