

United States Public Land Survey Corner Certificate of

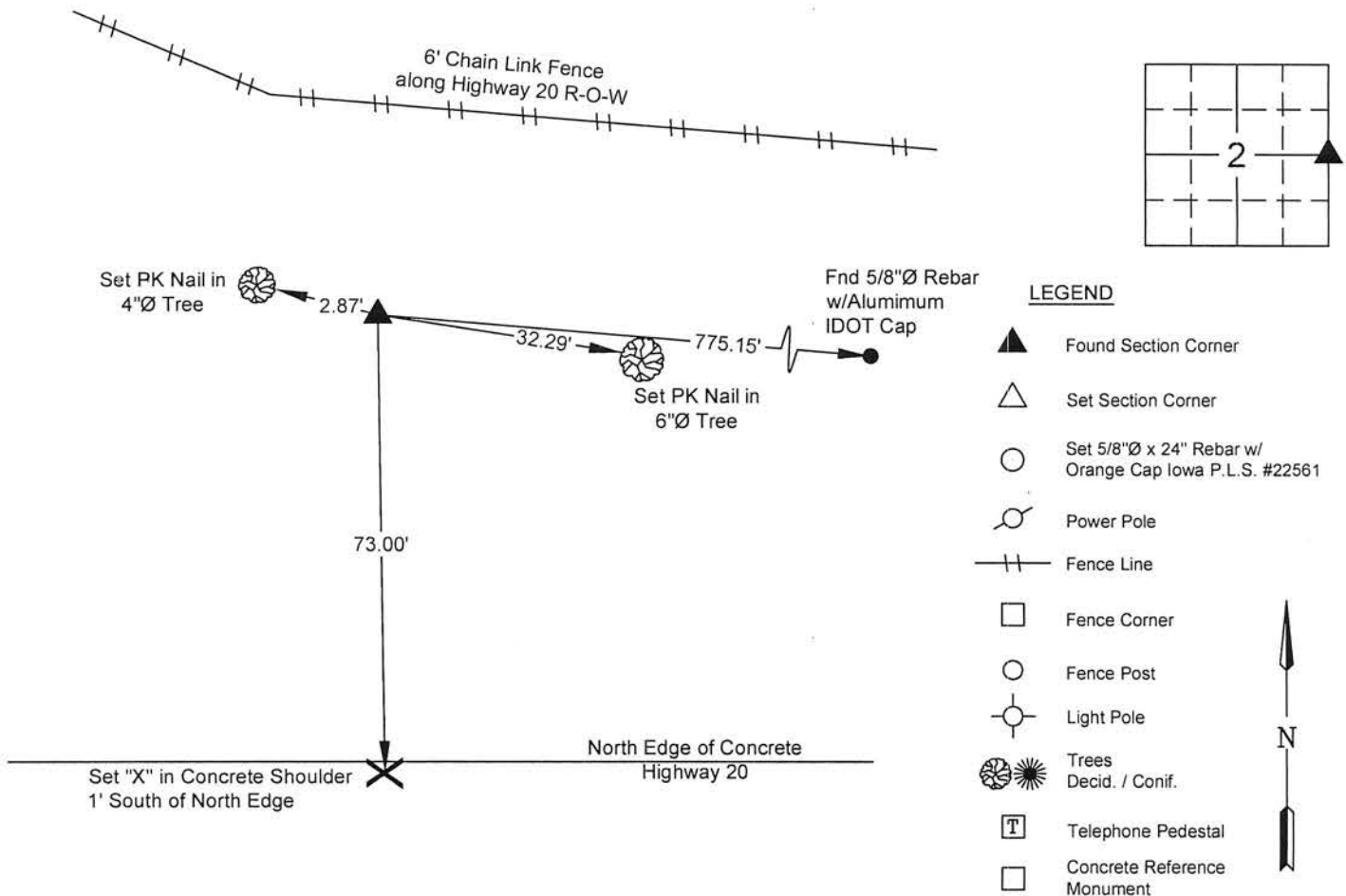
Land Survey Monuments situated in Section No. 2, Township No. 88 North, Range No. 14 West, of the Fifth Principal Meridian, Black Hawk County, Iowa Previously recorded in 338 Misc. 099.

Show reason for preparing this certificate, the evidence and detailed procedures used in establishing the corner positions and monumentation found or placed.)

Monument Description and Remarks: East Quarter Corner, Section 2 T88N R14W
Corner Certificate 338 Misc. 099 calls finding an Iron Pin with Aluminum IDOT Cap, searched area and found called for monument.
Corner was used for a survey in the NE 1/4 of Section 2 T88N R14W and the NW 1/4 of Section 1 T88N R14W.
This corner certificate is being prepared because there are no longer three reference ties.

PLAN - VIEW

(Show a minimum of three reference ties to durable physical objects, relevant monuments and physical conditions that will enable recovery of the corner.)



I hereby certify that this land surveying document was prepared and the related survey work was performed by me or under my direct personal supervision and that I am a duly licensed Land Surveyor under the laws of the State of Iowa.

Matthew A. Kofta, P.L.S. Date 6-22-15
License Number 22561
My license renewal date is December 31, 2016
Pages or sheets covered by this seal: 1

List Corner to be Indexed

Corner	Section	Twp	Range
East Quarter Corner	2	88 North	14 West



VJ Engineering
1501 Technology Parkway
Cedar Falls, Iowa - 319-266-5829

Section Corner
Reference Ties

file no. 158051
drawn by MAK
date 6/22/15