

WAYNE CLAASSEN ENGINEERING AND SURVEYING, INC.  
P.O. BOX 898 WATERLOO, IOWA 50704-0898

PHONE: (VOICE) 319-235-6294  
(FAX) 319-235-0028

UNITED STATES PUBLIC LAND SURVEY CORNER CERTIFICATE

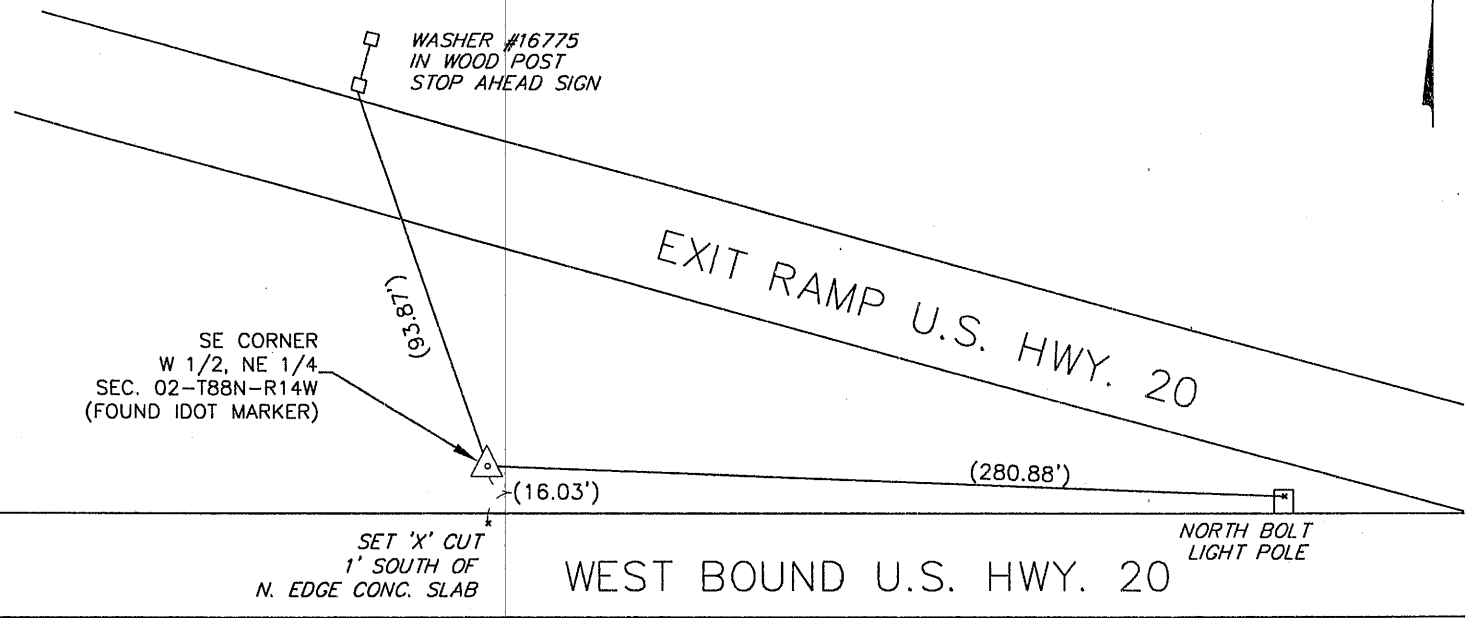
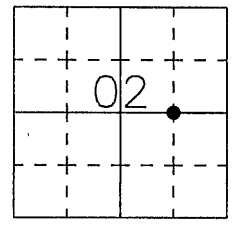
Land Survey Monuments situated in Section 02, Township 88 North, Range 14 West, of the Fifth Principal Meridian, Black Hawk County, Iowa.

Previously recorded in \_\_\_\_\_ in County Recorder's Office.  
(book, page, document number, etc.)

Monument Description and Remarks

No field notes from Black Hawk County Engineer's Office available. Survey recorded in Misc. Bk. 274-9 shows "Fd. Iowa D.O.T. Land Cor. Mon.". Survey recorded in Misc. Bk. 321-722 shows corner, but does not indicate what it is. Survey recorded in Doc. No. 2004-27796 shows "FOUND IOWA D.O.T. MON.". Found IDOT marker 1' deep. This certificate was filed because there is no certificate on file.

PLAN - VIEW



674-69

I hereby certify that this land surveying document was prepared and the related survey work was performed by me or under my direct personal supervision and that I am a duly Licensed Land Surveyor under the laws of the State of Iowa.

Signature: David L. Scheil  
David L. Scheil, L.S.

Date: SEPT. 18, 2013 Lic. No. 16775

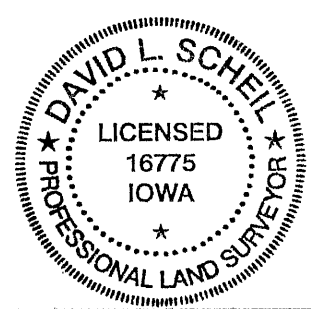
Pages or Sheets Covered by this Seal: THIS SHEET ONLY.

My license renewal date is December 31, 2014

SEAL

List Corners to be Indexed

Corners	Section	Twp	Range
SE CORNER, W. 1/2, NE 1/4	02	88 N	14 W



(700)

1