

SC
MISC
INDEX
MARGIN
PROOF
COMPARE

DEKOR HAWK COUNTY IOWA:SS
FILED FOR RECORD APR 20, 2000 AT
4:00 P. M. AND RECORDED IN BOOK 338
OF MISC PAGE 99

041703

Michael R. Fagle

RECORDER

FEE 1-5.00X

EARTH TECH

501 SYCAMORE ST WATERLOO, IA 50703

Michael R. Fagle, L.S.

Earth Tech, 501 Sycamore St., Suite 222, Waterloo, Iowa 50703

1-319-232-6531

UNITED STATES PUBLIC LAND SURVEY CORNER CERTIFICATE OF

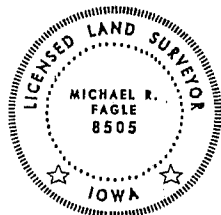
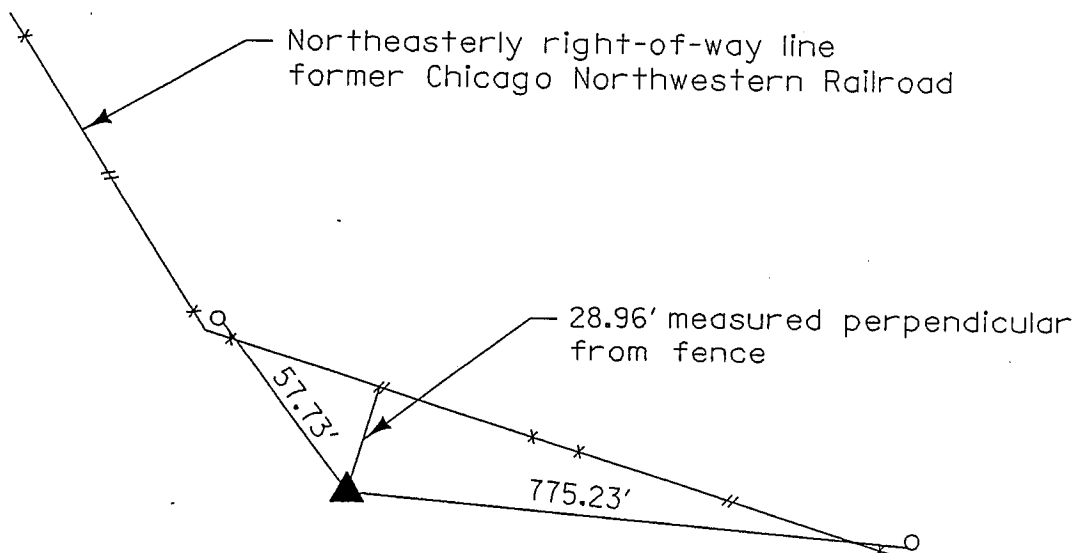
Land Survey Monuments situated in Section 1, Township 88 North,
Range 14 West, of the Fifth Principal Meridian, Black Hawk
County, Iowa. Previously recorded in _____
in County Recorder's Office. (Book, Page, Document Number, etc.)

(Show reason for preparing this certificate, the evidence and detailed procedures used in establishing the corner positions and monumentation found or placed.)

Monument Description and Remarks: Found Iron Pin with Aluminum IDOT Cap.
All measurements are horizontal ties. IDOT section corner survey dated 12-5-77
indicates they found a concrete monument. Highway 20 has been rebuilt and
monument was destroyed. We calculated the position of the corner from the IDOT
section corner survey and found iron pin with aluminum cap and we retied.

PLAN - VIEW

(Show a minimum of three reference ties to durable physical objects, relevant monuments and physical conditions that will enable recovery of the corner.)



I hereby certify that this Land Surveying document was prepared by me or under my direct personal supervision and that I am a duly Licensed Land Surveyor under the laws of the State of Iowa.

Michael R. Fagle 4-20-00
MICHAEL R. FAGLE Date

License number 8505

My license renewal date is December 31, 2000

Pages or sheets covered by this seal:

ONE

List Corners to be Indexed

Corners	Section	Twp	Range
West Quarter Corner	1	T 88 N	R 14 W

BOOK 338 PAGE 099