

United States Public Land Survey Corner Certificate of

Land Survey Monuments situated in Section No. 1, Township No. 88 North,
Range No. 14 West, of the Fifth Principal Meridian, Black Hawk County, Iowa
Previously recorded in none.

Show reason for preparing this certificate, the evidence and detailed procedures used in establishing the corner positions and monumentation found or placed.)

Monument Description and Remarks: Northwest Corner, Northeast Quarter, Southwest Quarter, Section 1 T88N R14W

Iowa DOT Corner Stone Survey dated 12-5-77 calls setting a 5/8"Ø Iron Pin, searched area with locator and found 5/8"Ø Twisted Iron Pin.

The two reference ties have been obliterated, distances between section corners East and West check within 0.02' (East) and 0.06' (West).

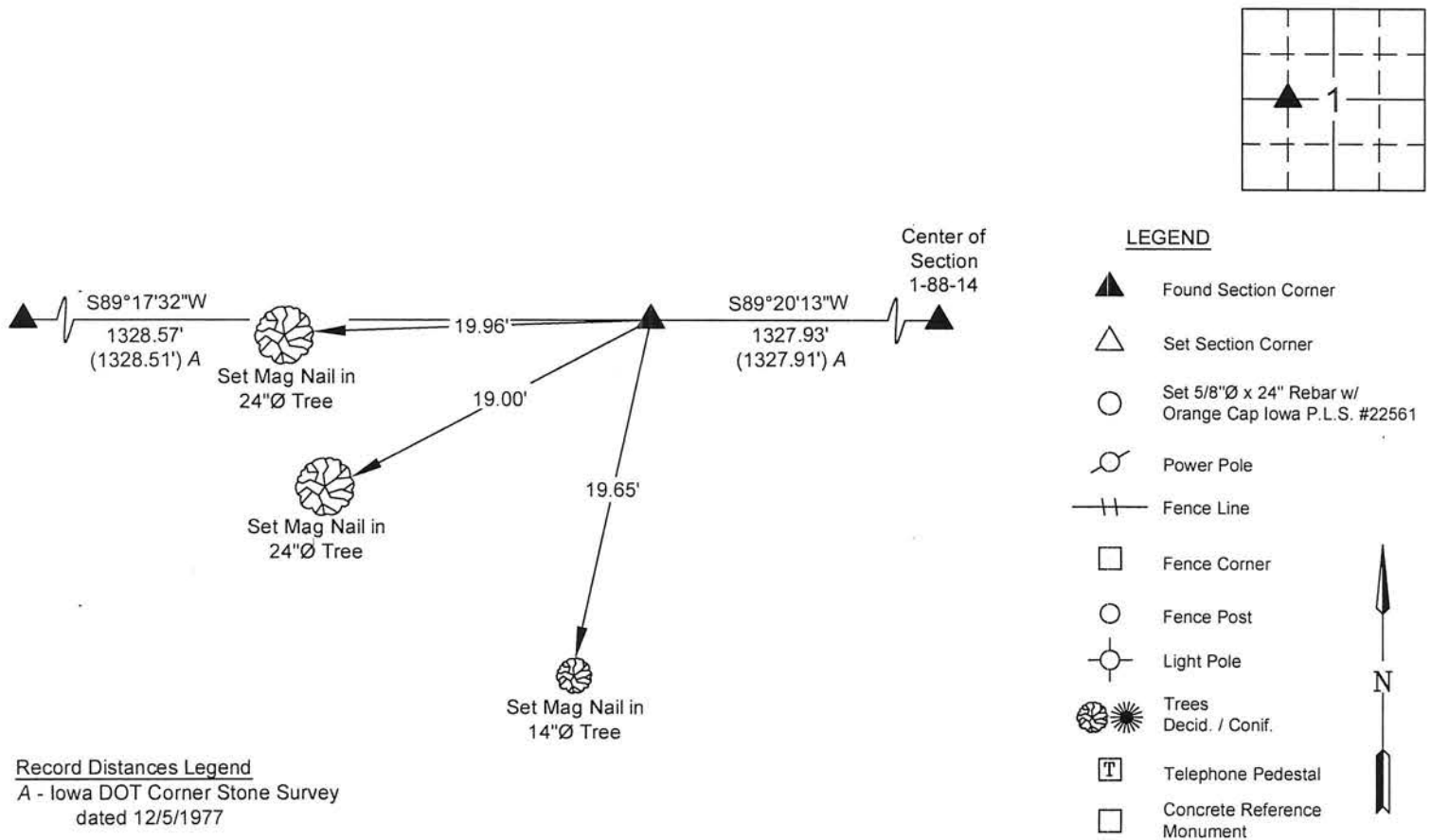
Used 5/8"Ø Twisted Iron Pin as the corner.

Corner was used for a survey in the NW 1/4 of Section 1 T88N R14W.

No previous corner certificate recorded.

PLAN - VIEW

(Show a minimum of three reference ties to durable physical objects, relevant monuments and physical conditions that will enable recovery of the corner.)



Record Distances Legend

A - Iowa DOT Corner Stone Survey
dated 12/5/1977

I hereby certify that this land surveying document was prepared and the related survey work was performed by me or under my direct personal supervision and that I am a duly licensed Land Surveyor under the laws of the State of Iowa.



Matthew A. Kofta, P.L.S.

Date

License Number 22561

My license renewal date is December 31, 2016

Pages or sheets covered by this seal: 1

List Corner to be Indexed

Corner	Section	Twp	Range
Northwest Corner	1	88 North	14 West
Northeast Quarter			
Southwest Quarter			



VJ Engineering
1501 Technology Parkway
Cedar Falls, Iowa - 319-266-5829

Section Corner
Reference Ties

file no.
158051
drawn by
MAK
date
6/22/15