

* Prepared By: Matthew A. Kofta, P.L.S., VJ Engineering, 1501 Technology Parkway, Suite 100, Cedar Falls, Iowa, 50613, (319) 266-5829
Return To: Matthew A. Kofta, P.L.S., VJ Engineering, 1501 Technology Parkway, Suite 100, Cedar Falls, Iowa, 50613, (319) 266-5829

United States Public Land Survey Corner Certificate of

Land Survey Monuments situated in Section No. 1, Township No. 88 North,
Range No. 14 West, of the Fifth Principal Meridian, Black Hawk County, Iowa
Previously recorded in N/A.

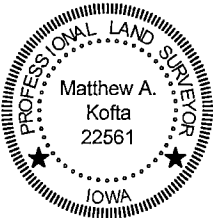
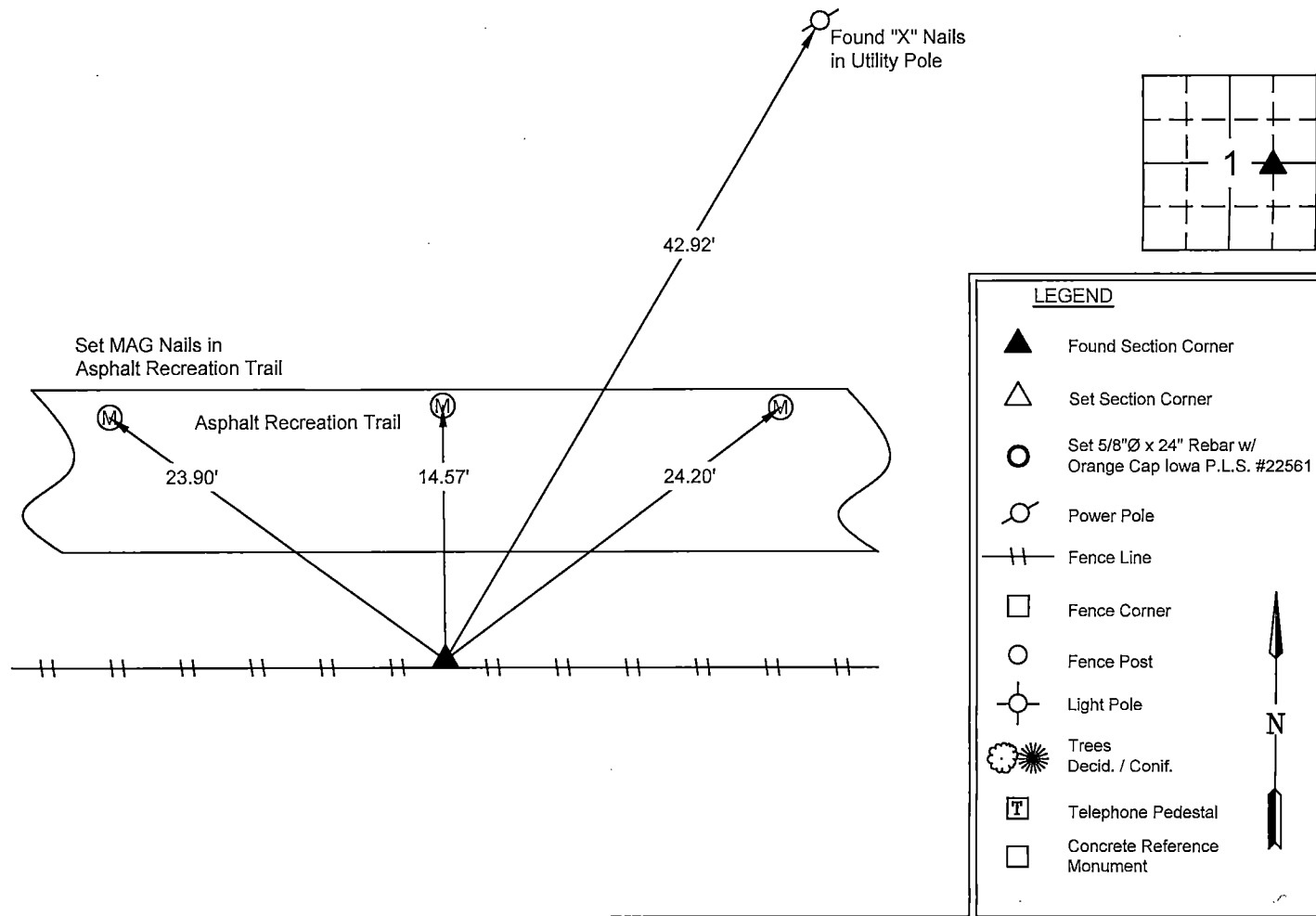
Show reason for preparing this certificate, the evidence and detailed procedures used in establishing the corner positions and monumentation found or placed.

Monument Description and Remarks: Center-East 1/16 Corner – Section 1 - T88N - R14W

IDOT Land Corner Survey dated 12-5-1977 states that the corner is monument with a pinched pipe. Sketch of survey 329 Misc 555 states that an
iron pin is at the corner. Searched area and found a 1"Ø Pinched Pipe, accepted and used found pinched pipe as the corner.
This corner certificate is being prepared as there is not one of record.

PLAN - VIEW

(Show a minimum of three reference ties to durable physical objects, relevant monuments and physical conditions that will enable recovery of the corner.)



I hereby certify that this land surveying document was prepared and the related survey work was performed by me or under my direct personal supervision and that I am a duly licensed Land Surveyor under the laws of the State of Iowa.

Matthew A. Kofta
Matthew A. Kofta, P.L.S.
License Number 22561
My license renewal date is December 31, 2022
Pages or sheets covered by this seal: 1

10-13-21 Date

List Corner to be Indexed

Corner	Section	Twp	Range
Center-East 1/16	1	88 N	14 W



VJ Engineering
1501 Technology Parkway
Cedar Falls, Iowa - 319-266-5829

Section Corner
Reference Ties

file no.
218102
drawn by
MAK
date
10/13/21