

Prepared by & Return to: Herald - Reicks Surveying, 10 East Main Street, New Hampton, IA 50659, Ph. 641-394-2725

UNITED STATES PUBLIC LAND SURVEY CORNER CERTIFICATE

Land Survey Monuments situated in Section **36**, Township **88** North, Range **13** West of the Fifth Principal Meridian, **Black Hawk** County, Iowa. **1.)** Previously recorded in Doc. #2007-005867 in the County Recorder's office. **2.)** Previously recorded in Doc. #2007-005865 in the County Recorder's office.

This certificate is being prepared in compliance with Iowa Code Chapter 355.11 because:

- 1 & 2

☐ There is no certificate on file for this corner.

☐ There are no longer three valid ties of record.

☐ There are changes to reference ties of record.

☒ There is change of monumentation of record.

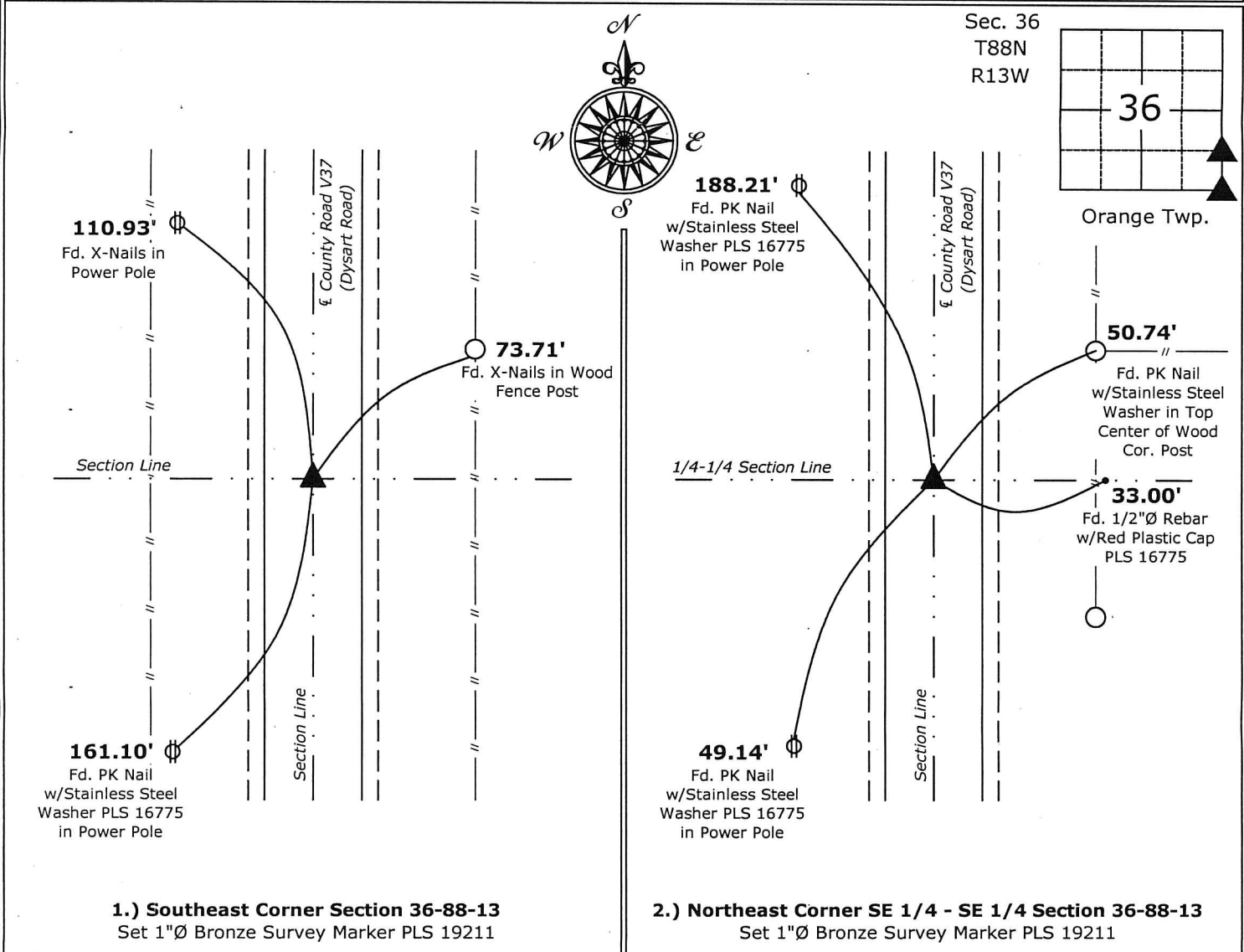
☐ To clarify description of record monument (ties).

Monument Description and Remarks:

- 1.) Southeast Corner:** Set 1"Ø Bronze Survey Marker PLS 19211 at previous location (Found 5/8"Ø Rebar) by means of coordinates obtained prior to highway reconstruction, Project No. FM-TSF-C007(130)--5B-07.
- 2.) Northeast Corner SE 1/4 - SE 1/4:** Set 1"Ø Bronze Survey Marker PLS 19211 at previous location (Found PK Nail w/Stainless Steel Washer PLS 16775) by means of coordinates obtained prior to highway reconstruction, Project No. FM-TSF-C007(130)--5B-07.

PLAN - VIEW

(Show a minimum of three reference ties to durable physical objects, relevant monuments and physical conditions that will enable recovery of the corner.)



I hereby certify that this land surveying document was prepared and the related survey work was performed by me or under my direct personal supervision and that I am a duly licensed Land Surveyor under the laws of the State of Iowa.

Kirk D. Reicks 12-4-14
Kirk D. Reicks Date:
License number 19211
My license renewal date is December 31, 2014.
Sheets covered by this seal: Individual sheet only

| List Corners to be Indexed | | | |
|---------------------------------|---------|------|-------|
| Corners | Section | Twp. | Range |
| SE | 36 | 88 | 13 |
| NE-SE-SE | 36 | 88 | 13 |
| Project Number: 2014-135 | | | |
| FB: Black Hawk County 1, Pg. 17 | | | |

File: S:\C3D Projects\2014\2014-135 (BH Co-Dysart)\2014-135.dwg, 11/17/2014 4:57:23 PM