



Doc ID: 005634360001 Type: GEN
Recorded: 12/05/2014 at 12:02:28 PM
Fee Amt: \$7.00 Page 1 of 1
Black Hawk County Iowa
JUDITH A MCCARTHY RECORDER

File **2015-00009466**

Prepared by & Return to: Herold - Reicks Surveying, 10 East Main Street, New Hampton, IA 50659, Ph. 641-394-2725

UNITED STATES PUBLIC LAND SURVEY CORNER CERTIFICATE

Land Survey Monuments situated in Section **36**, Township **88** North, Range **13** West of the Fifth Principal Meridian, **Black Hawk** County, Iowa. Previously recorded in Doc. #2007-005868 in the County Recorder's office.

This certificate is being prepared in compliance with Iowa Code Chapter 355.11 because:



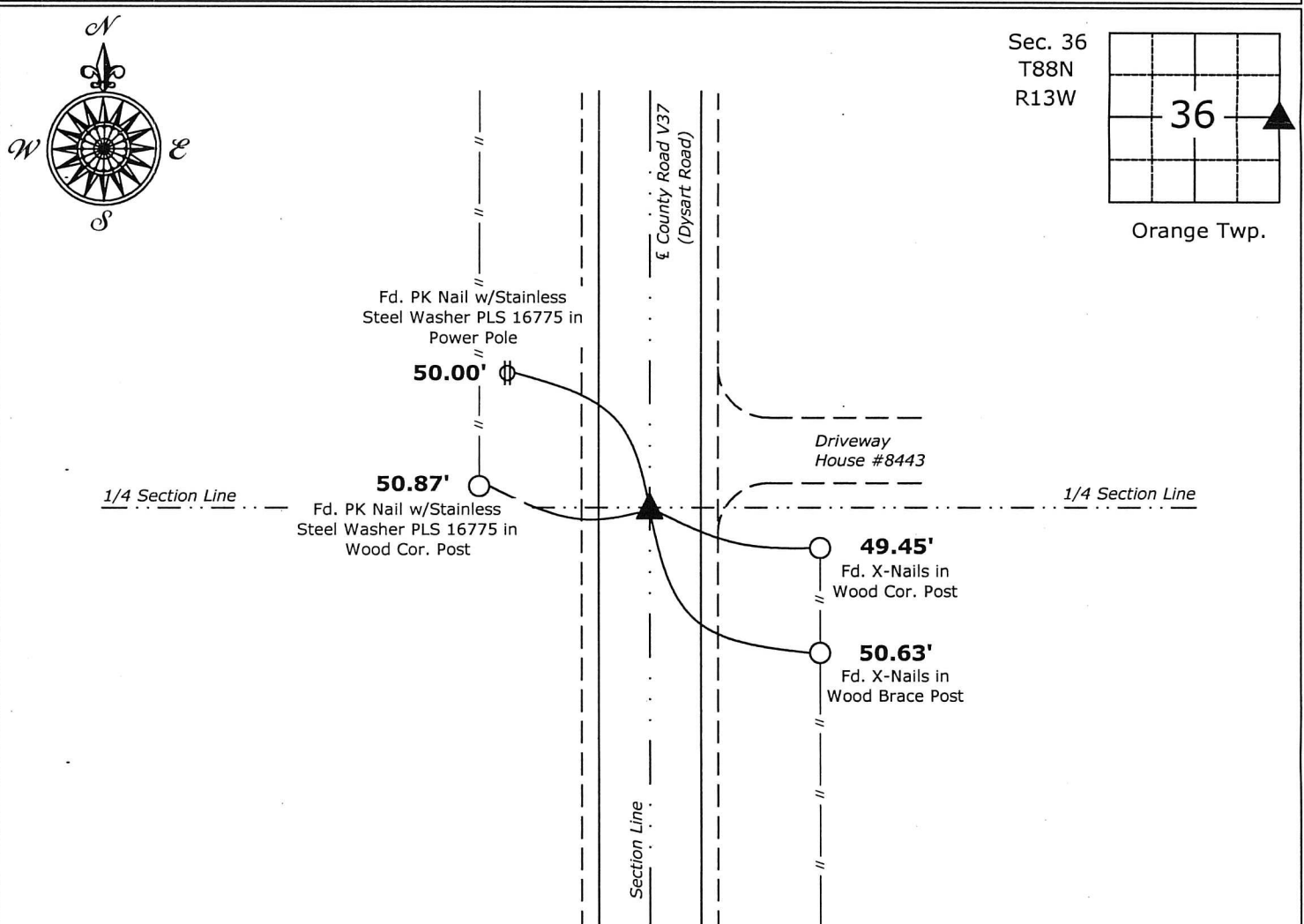
- ☐ There is no certificate on file for this corner.
- ☐ There are no longer three valid ties of record.
- ☐ There are changes to reference ties of record.
- ☒ There is change of monumentation of record.
- ☐ To clarify description of record monument (ties).

Monument Description and Remarks:

East 1/4 Corner: Set 1"Ø Bronze Survey Marker PLS 19211 at previous location (Found 5/8"Ø Rebar) by means of coordinates obtained prior to highway reconstruction, Project No. FM-TSF-C007(130)--5B-07.

PLAN - VIEW

(Show a minimum of three reference ties to durable physical objects, relevant monuments and physical conditions that will enable recovery of the corner.)



East 1/4 Corner Section 36-88-13
Set Set 1"Ø Bronze Survey Marker PLS 19211



I hereby certify that this land surveying document was prepared and the related survey work was performed by me or under my direct personal supervision and that I am a duly licensed Land Surveyor under the laws of the State of Iowa.

Kirk D. Reicks 12-4-14
Kirk D. Reicks Date:

License number 19211

My license renewal date is December 31, 2014.
Sheets covered by this seal: Individual sheet only

List Corners to be Indexed

Corners	Section	Twp.	Range
E 1/4	36	88	13

Project Number: 2014-135

FB: Black Hawk County 1, Pg. 17

File: S:\CSD Projects\2014\2014-135 (BH Co-Dysart)\2014-135.dwg, 11/17/2014 4:57:50 PM