

ENV WAYNE CLAASSEN ENGINEERING & SURVEYING

IRS
PA
Z

Document Number: 2009010828
Date: Dec 04, 2008 2:59:01 pm
Aud Fee: 0.00 Rec Fee: 5.00
Trans Tax: 0.00 Rec Management Fee: 1.00
E-Com Fee: 1.00 Non-Standard Page Fee: 0.00
Filed for record in Black Hawk County, Iowa
Judith A. McCarthy, County Recorder

WAYNE CLAASSEN ENGINEERING AND SURVEYING, INC.
P.O. BOX 898 WATERLOO, IOWA 50704-0898

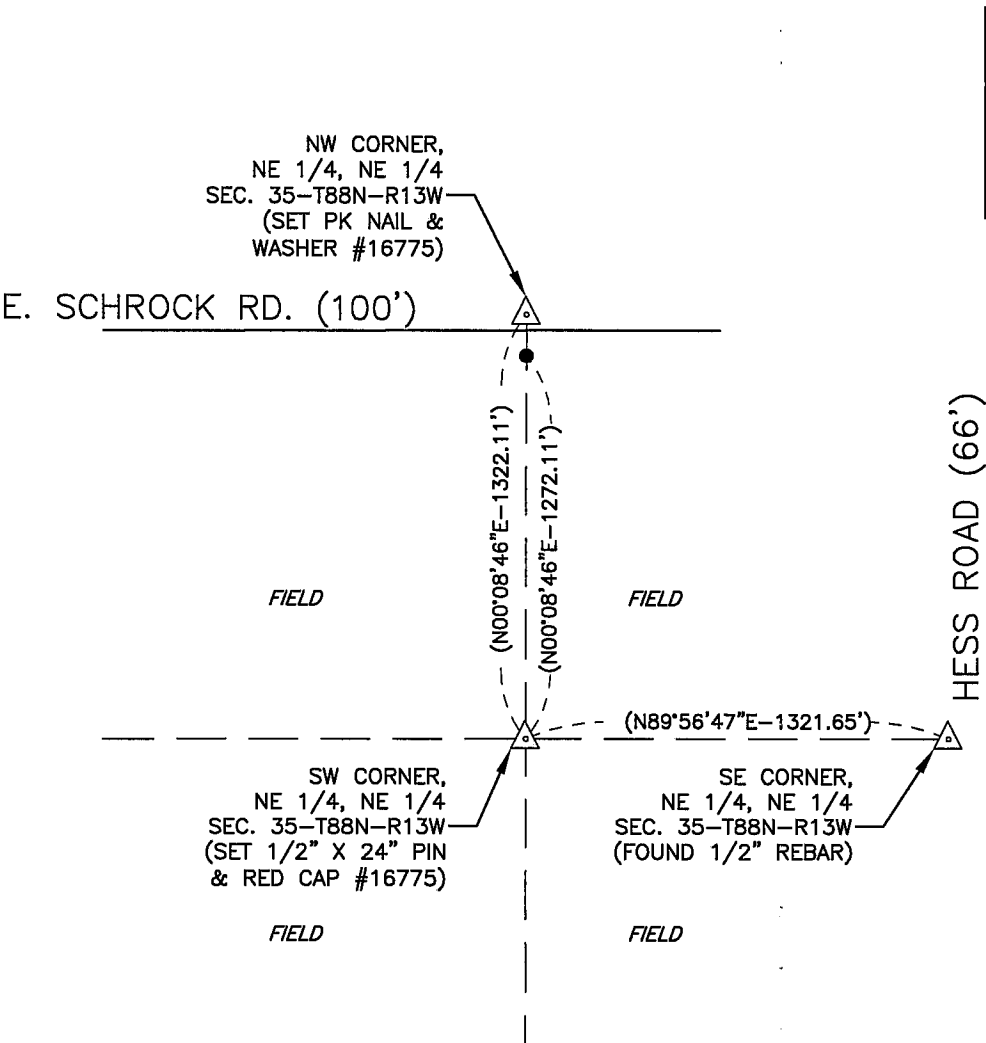
PHONE: (VOICE) 319-235-6294
(FAX) 319-235-0028

UNITED STATES PUBLIC LAND SURVEY CORNER CERTIFICATE

Land Survey Monuments situated in Section 35, Township 88 North, Range 13 West, of the Fifth Principal Meridian, Black Hawk County, Iowa.
Previously recorded in N/A in County Recorder's Office.
(book, page, document number, etc.)

Monument Description and Remarks
No certificate on file. Set 1/2" x 24" pin and red cap #16775 at intersection of lines between opposite 1/4-1/4 corners.

PLAN - VIEW



BK 605, PG. 65

I hereby certify that this land surveying document was prepared and the related survey work was performed by me or under my direct personal supervision and that I am a duly Licensed Land Surveyor under the laws of the State of Iowa.

Signature: David L. Scheil
David L. Scheil, L.S.
Date: Dec. 03, 2008 Lic. No. 16775
Pages or Sheets Covered by this Seal: THIS SHEET ONLY.
My license renewal date is December 31, 2008
SEAL

List Corners to be Indexed

Corners	Section	Twp	Range
SW CORNER NE 1/4, NE 1/4	35	88 N	13 W