

2025-00641
RECORDED: 01/14/2025 01:10:17 PM
RECORDING FEE: \$7.00
IOWA E-FILING FEE: \$3.13
COMBINED FEE: \$10.13
REVENUE TAX: \$0.00
SANDIE L. SMITH, RECORDER
BLACK HAWK COUNTY, IOWA

Prepared / Return To: Matthew A. Kofa, P.L.S., VJ Engineering, 1501 Technology Parkway, Suite 100, Cedar Falls, Iowa, 50613, (319) 266-5829

United States Public Land Survey Corner Certificate of

Land Survey Monuments situated in Section No. 35, Township No. 88 North, Range No. 13 West, of the Fifth Principal Meridian, Black Hawk County, Iowa Previously recorded in Document No. File No. 2009-20193

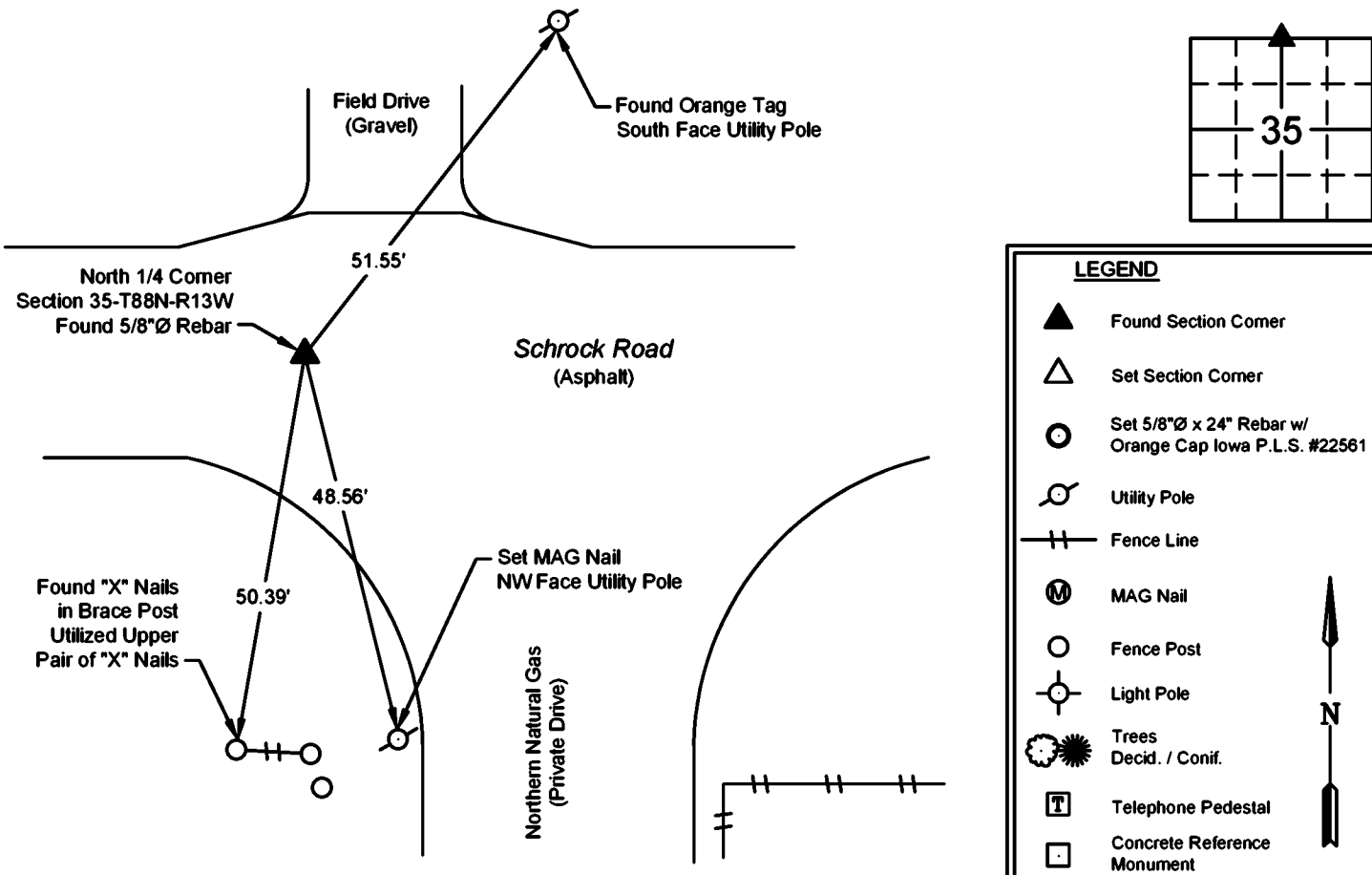
Show reason for preparing this certificate, the evidence and detailed procedures used in establishing the corner positions and monumentation found or placed.

Monument Description and Remarks: North 1/4 Corner -- Section 35-T88N-R13W

Previous corner certificate calls out setting a 5/8"Ø x 18" rebar at the corner. Searched area as indicated and found 5/8"Ø rebar flush with the surface of the asphalt road, used found 5/8"Ø rebar as the corner.
This corner certificate is being prepared to update the reference ties.

PLAN - VIEW

(Show a minimum of three reference ties to durable physical objects, relevant monuments and physical conditions that will enable recovery of the corner.)



I hereby certify that this land surveying document was prepared and the related survey work was performed by me or under my direct personal supervision and that I am a duly licensed Land Surveyor under the laws of the State of Iowa.

Matthew A. Kofa, P.L.S.
License Number 22561
My license renewal date is December 31, 2026
Pages or sheets covered by this seal: 1 of 1

List Corner to be Indexed

Corner	Section	Twp	Range
North 1/4	35	88N	13W
South 1/4	26	88N	13W



VJ Engineering
1501 Technology Parkway
Cedar Falls, Iowa - 319-266-5829

Section Corner
Reference Ties

file no.
248097
drawn by
ME
date
01/13/25