

ENV WAYNE CLAASSEN ENGINEERING & SURVEYING

IRS
PK
Z

Document Number: 2009010831
Date: Dec 04, 2008 2:59:50 pm
Aud Fee: 0.00 Rec Fee: 5.00
Trans Tax: 0.00 Rec Management Fee: 1.00
E-Corn Fee: 1.00 Non-Standard Page Fee: 0.00
Filed for record in Black Hawk County, Iowa
Judith A. McCarthy, County Recorder

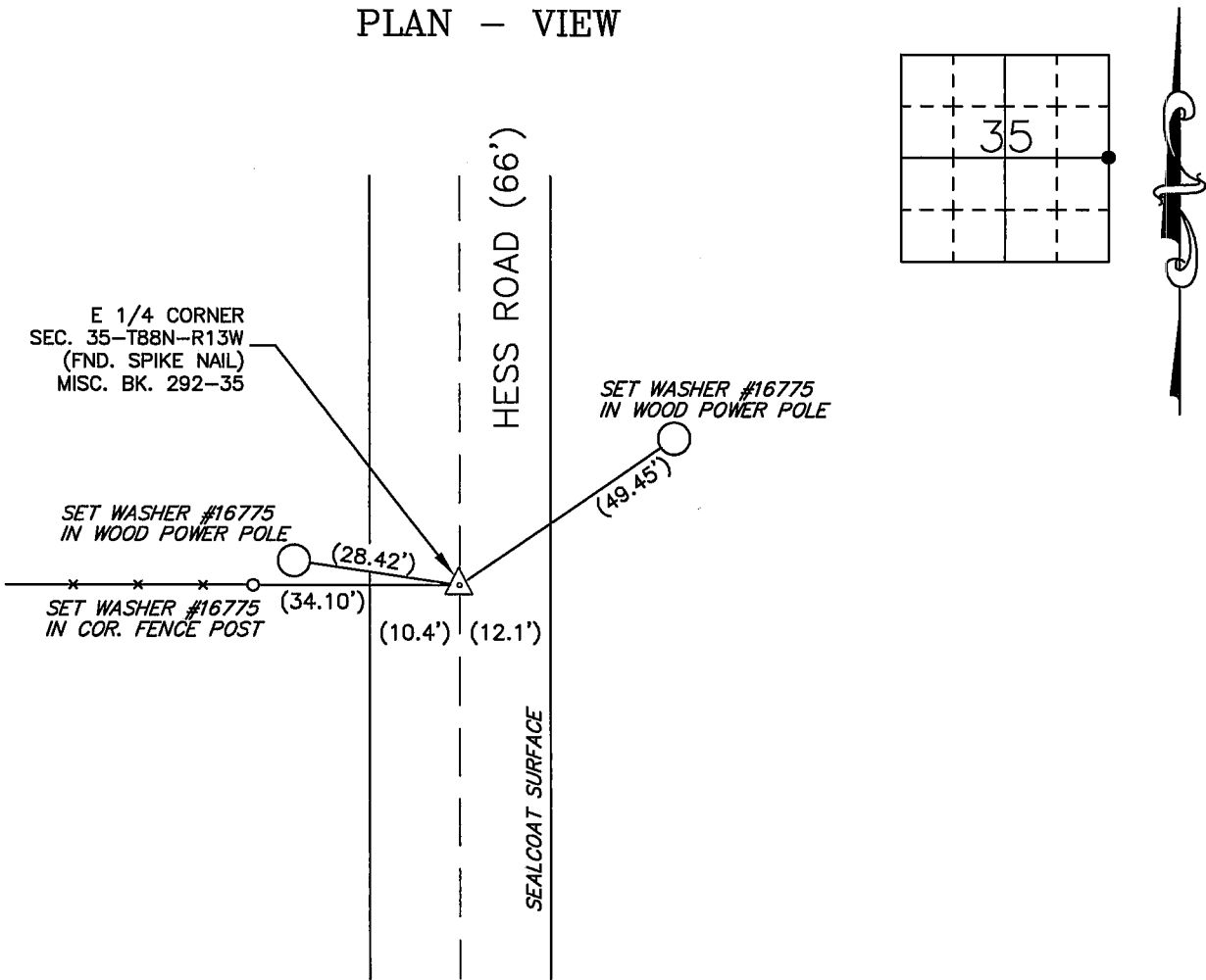
WAYNE CLAASSEN ENGINEERING AND SURVEYING, INC.
P.O. BOX 898 WATERLOO, IOWA 50704-0898
PHONE: (VOICE) 319-235-6294
(FAX) 319-235-0028

UNITED STATES PUBLIC LAND SURVEY CORNER CERTIFICATE

Land Survey Monuments situated in Section 35, Township 88 North, Range 13 West, of the Fifth Principal Meridian, Black Hawk County, Iowa.
Previously recorded in MISC. BK. 292-35 in County Recorder's Office.
(book, page, document number, etc.)

Monument Description and Remarks
Found spike nail as per above reference. This certificate was filed because ties from the above reference were missing and corner needed to be re-tied.

PLAN - VIEW



BK 605, PG. 65

I hereby certify that this land surveying document was prepared and the related survey work was performed by me or under my direct personal supervision and that I am a duly Licensed Land Surveyor under the laws of the State of Iowa.

Signature: David L. Scheil
David L. Scheil, L.S.
Date: DEC. 03, 2008 Lic. No. 16775
Pages or Sheets Covered by this Seal: THIS SHEET ONLY.
My license renewal date is December 31, 2008
SEAL

List Corners to be Indexed

Corners	Section	Twp	Range
E 1/4 CORNER	35	88 N	13 W