

PAUL HELLAND

INS

P

Z

Document Number: 2007021947

Date: Apr 18, 2007 4:30:00 pm

Aud Fee: 0.00 Rec Fee: 5.00

Trans Tax: 0.00 Rec Management Fee: 1.00

E-Com Fee: 1.00 Non-Standard Page Fee: 0.00

Filed for record in Black Hawk County, Iowa
Judith A. McCarthy, County Recorder

Paul H. Helland, 1107 Technology Parkway, Cedar Falls, Iowa 50613-6951, (319)-266-0161

UNITED STATES PUBLIC LAND SURVEY CORNER CERTIFICATE OF

LAND SURVEY MONUMENTS SITUATED IN SECTION NO. 34, TOWNSHIP NO. 88 NORTH, RANGE
NO. 13 WEST OF THE FIFTH PRINCIPAL MERIDIAN, BLACK HAWK COUNTY, IOWA.
PREVIOUSLY RECORDED IN N/A

(SHOW REASON FOR PREPARING THIS CERTIFICATE, THE EVIDENCE AND DETAILED PROCEDURES USED IN ESTABLISHING THE
CORNER POSITIONS AND MONUMENTATION FOUND OR PLACED.)

MONUMENT DESCRIPTION AND REMARKS:

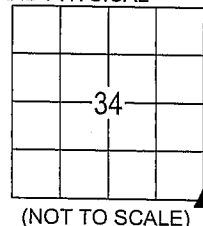
NO USPLSCC ON FILE. SURVEY COMPLETED IN THE SE 1/4 OF SEC. 34-T88N-R13W.

SE CORNER: NO BLACK HAWK COUNTY ENGINEER REFERENCE TIES AVAILABLE. W.P.A. TIES DATED 10/15/40 CALL FOR [FOUND
LIMESTONE 17"x13"x19" LOWERED ALL EVIDENCE IN PLACE AND SET CM ON TOP WITH CAP MARKED (SEE DETAIL B BELOW) SET
TOP OF C.M. 12" DEEP]. FOUND 1 1/4" o.d. PINCHED PIPE 0.3' DEEP. TIED OUT AND REMOVED SAID PIPE. FOUND STANDARD
CONCRETE MONUMENT w/ BRASS CAP MARKED AS IN DETAIL "B", 0.7' DEEP. UTILIZED THIS AS SE CORNER SEC 34-T88N-R13W.
REPLACED SAID PINCHED PIPE AT ORIGINAL POSITION. ALSO FOUND NE CORNER SEC. 3-T87N-R13W (STANDARD CONCRETE
MONUMENT w/BRASS CAP MARKED AS IN DETAIL "C", 0.2' DEEP) 3.26' EAST. THIS CORRESPONDS WITHIN REASON TO WPA TIES
(DATED 10/15/40) AND CHAINING NOTES (DATED 10/20/40). PLAT OF SURVEY BY PAUL HELLAND (DATED 1994) & USPLSCC DOC. NO.
2004-30772 (DATED 4/20/2004) APPEAR TO HAVE MISTAKENLY UTILIZED THE SAID PINCHED PIPE INSTEAD OF THE CORRECT
MONUMENT AS MARKED IN DETAIL "C" FOR THE NE CORNER SEC. 3-T87N-R13W. IDOT LAND CORNER SURVEY (DATED 5/19/1958)
APPEARS TO HAVE MISTAKENLY USED THE MONUMENT AS MARKED IN DETAIL "B" INSTEAD OF THE CORRECT MONUMENT AS
MARKED IN DETAIL "C" FOR THE NE CORNER SEC. 3-T87N-R13W.

(SHOW A MINIMUM OF THREE REFERENCE TIES TO DURABLE PHYSICAL OBJECTS, RELEVANT MONUMENTS AND PHYSICAL
CONDITIONS THAT WILL ENABLE RECOVERY OF THE CORNER.)

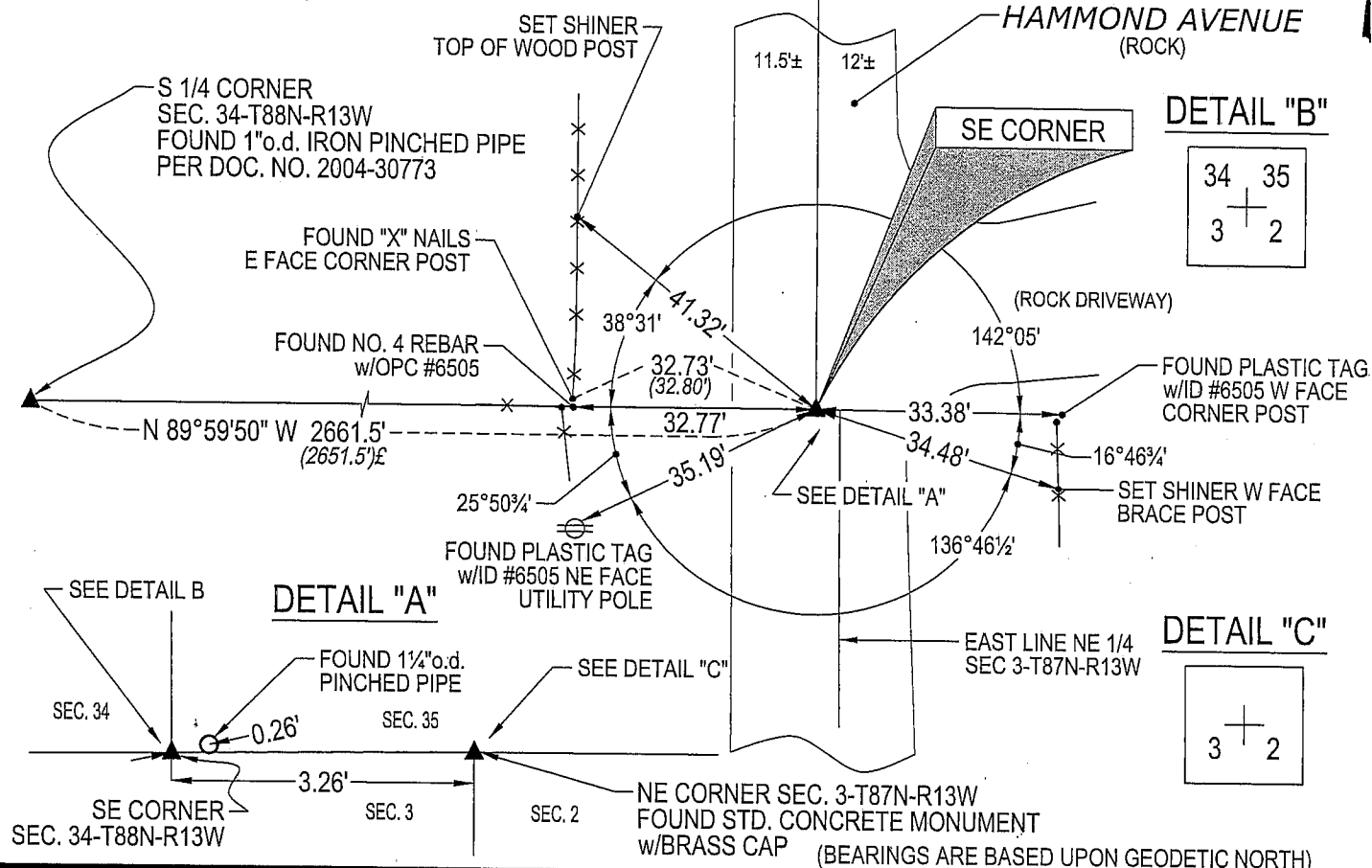
E 1/4 CORNER
SEC. 34-T88N-R13W
FOUND STD. CONCRETE
MONUMENT w/ BRASS CAP

PLAN VIEW

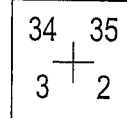


(0.0') PER PLAT OF SURVEY BK 323 PG 230
DATED 11/25/96

(0.0') PER W.P.A. CHAINING NOTES DATED 10/20/40

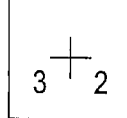


DETAIL "B"



DETAIL "A"

DETAIL "C"



HELLAND ENGINEERING & SURVEYING, LTD.
1107 Technology Parkway
Cedar Falls, Iowa 50613-6951
(319)-266-0161

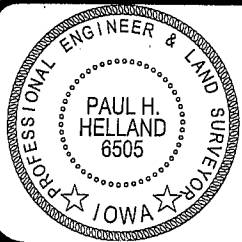
SHINER = 8D NAIL & 1 15/16" Ø METAL SHINER
OPC = PLASTIC CAP (O=ORANGE, R=RED, Y=YELLOW)

(00') RECORDED AS

FILE NAME: 07-145C1.DWG

LIST CORNERS TO BE INDEXED

CORNER	SECTION	TOWNSHIP	RANGE
SE CORNER	34	88N	13W



I hereby certify that this land surveying document was prepared
and the related survey work was performed by me or under my
direct personal supervision and that I am a duly licensed Land
Surveyor under the laws of the State of Iowa.

Paul H. Helland
Paul H. Helland
License Number 6505
My license renewal date is December 31, 2007.
All pages or sheets are covered by this seal except: