



Doc ID: 003750790001 Type: GEN  
Recorded: 04/27/2009 at 12:09:25 PM  
Fee Amt: \$0.00 Page 1 of 1  
Instr# 200800024927  
Black Hawk County Iowa  
JUDITH A MCCARTHY RECORDER  
Book 1080 Page 35865 - 35865

File 2009-00020191

PREPARED BY: BLACK HAWK COUNTY ENGINEERS OFFICE  
316 E. FIFTH STREET, ROOM 211 WATERLOO, IOWA 50703

PH.# (319) 833-3008  
FAX# (319) 833-3139

SLSI 9-94  
BHCO 03-09

UNITED STATES PUBLIC LAND SURVEY CORNER CERTIFICATE OF  
Land Survey Monuments situated in Section 34, Township 88 N,  
Range 13 W, of the Fifth Principal Meridian, BLACK HAWK County, Iowa.  
Previously recorded in FEE Book 2007, Page 10990, in County Recorder's Office.

(Show reason for preparing this certificate): The corner monument has been Replaced or Modified, per Ia. Code 355.11(1)(c)

(Evidence and detailed procedures used in establishing the corner position(s) and monumentation found or placed.)

Monument Description and Remarks: N. 1/4 COR. FOUND 5/8" Ø REBAR IN ACC  
PVMT. PRIOR TO HMA RESURFACING, PER CURRENT RECORD. CORNER TEMP. REF. PER RTK  
GPS, AND EXIST. PVMT. MILLED 1-1/2" & BASE WIDENED TO ±26' WIDTH WITH 2-1/2"  
H.M.A. SURFACE COURSE ADDED. CORNER LOC. CORED 4" Ø AT FULL DEPTH ACC (12" DEEP),  
WITH STUB REBAR FOUND IN CENTER OF CORE. WEAK MAGNETIC SOUNDING STILL REMAINS  
@ CORE LOCATION, IN ±CENTER OF CORE HOLE. RESET CORNER PER RTK GPS REF. WITH  
±18"L. x 5/8" REBAR FLUSH w/HMA SURFACE. PATCHED CORE WITH ACC/HMA MIX, WITH  
CORNER LOCATED @ 0.40' NORTH OF C.L. HMA/ACC PAVING JOINT. LAND CORNER "NOT  
REFERENCED" BY IA. DOT R.O.W. SURVEY DATED MAY 19, 1958 BY PLS. #2051 FOR PROJECT  
E-1091(1), REF. TO STA. 2295+90.9 w/ CORNER 117.8' LT. OF GEOM./TANG. HWY. STA. REF.

NOTE: ALL DISTANCES PLUMB/HORIZ.  
(H.D.), "UNLESS DENOTED".

### PLAN VIEW

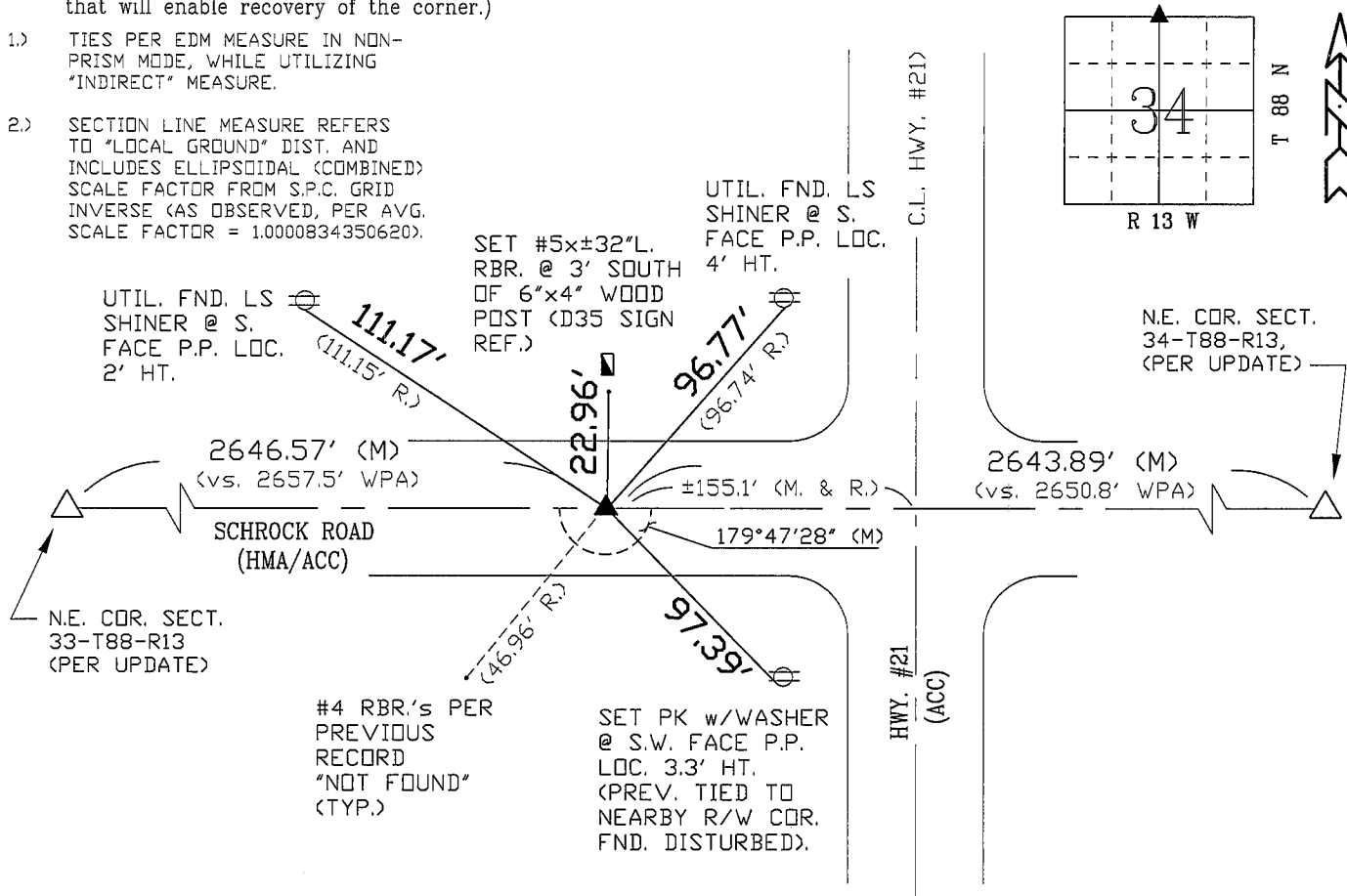
BHco Hist. Ties: BK. #1001 p.34 88-13

FIELD BOOK: BHco. #488 p.38

"NOT TO SCALE"

(Show a minimum of three reference ties to durable physical objects, relevant monuments and physical conditions that will enable recovery of the corner.)

- 1.) TIES PER EDM MEASURE IN NON-PRISM MODE, WHILE UTILIZING "INDIRECT" MEASURE.
- 2.) SECTION LINE MEASURE REFERS TO "LOCAL GROUND" DIST. AND INCLUDES ELLIPSOIDAL (COMBINED) SCALE FACTOR FROM S.P.C. GRID INVERSE (AS OBSERVED, PER AVG. SCALE FACTOR = 1.0000834350620).



S.P.C., Ia. N. Zone, USft

N=3610744.86

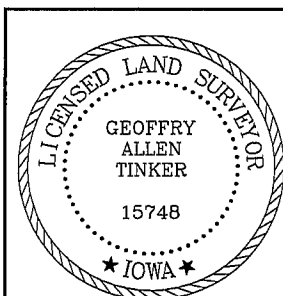
E=5232495.36

(NAD83-2007 "BHco07", RTK Obs.)

FIELD SURVEY: G.T. SEPT. 16-17, 2008

PREPARED BY: G.T. & J.Z. 4/24/09

### CERTIFICATION



I hereby certify that this land surveying document was prepared and the related survey work was performed by me or under my direct personal supervision and that I am a duly licensed Land Surveyor under the laws of the State of Iowa.

*Geoffrey Allen Tinker* 04/27/2009  
Geoffrey Allen Tinker (date)

License Number 15748

My license renewal date is December 31, 2010

Pages or sheets covered by this seal:

This Land Corner Certificate Only.

### LIST CORNERS TO BE INDEXED

Corner	Section -	Township -	Range
N. 1/4 Cor.	34	88 N	13 W
S. 1/4 Cor.	27	88 N	13 W

### INDEX OF ABBREVIATIONS

(M) = "Measured" Dimension	"NP" = Reflectorless EDM Meas.
(P) = "Platted" Dimension	"MLM" = Indirect Measure
(R) = "Record" Dimension	"CM" = Concrete Monument
(C) = "Calculated" Dimension	"SM" = Survey Marker Spike/Tag
"IGS" = Iowa Geodetic Survey	
"WPA" = Works Progress Admin. Survey	
"G" = per George Miller Survey (BHco Surveyor 1858-1860)	
"B" = per John Ball Survey (BHco Surveyor 1866-1891)	
"N" = per Nathan Barber Survey (BHco Surveyor 1908-1931)	