

Jeffrey P. Helland, 1107 Technology Parkway, Cedar Falls, Iowa 50613-6951, (319)-266-0161

UNITED STATES PUBLIC LAND SURVEY CORNER CERTIFICATE
OFLAND SURVEY MONUMENTS SITUATED IN SECTION NO. 34, TOWNSHIP NO. 88 NORTH, RANGE
NO. 13 WEST OF THE FIFTH PRINCIPAL MERIDIAN, BLACK HAWK COUNTY, IOWA.

PREVIOUSLY RECORDED IN _____

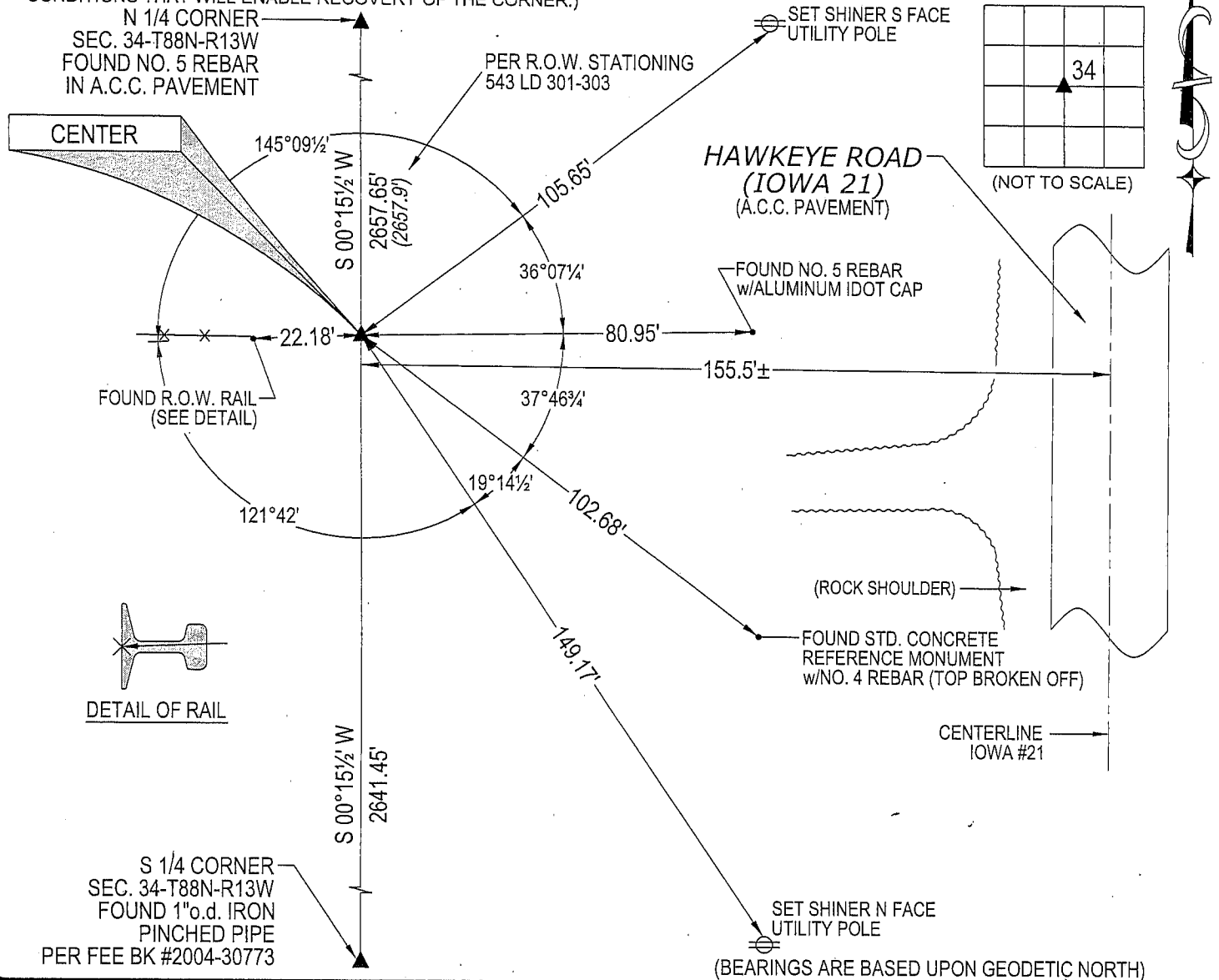
(SHOW REASON FOR PREPARING THIS CERTIFICATE, THE EVIDENCE AND DETAILED PROCEDURES USED IN ESTABLISHING THE
CORNER POSITIONS AND MONUMENTATION FOUND OR PLACED.)

MONUMENT DESCRIPTION AND REMARKS:

NO USPLSCC ON FILE. SURVEY COMPLETED IN THE SW 1/4 OF SEC. 34-T88N-R13W.

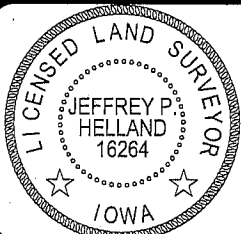
→ **CENTER:** NO BLACK HAWK COUNTY ENGINEER REFERENCE TIES AVAILABLE. LAND CORNER SURVEY FOR
PROJECT BLACKHAWK CO. F-1091(1) DATED 5/19/1958 DOES NOT REFERENCE CORNER. R.O.W. DESCRIPTION
LAND DEED BOOK 543 PAGE 303 SHOWS THE CENTER AT STA. 2269+33. FOUND TWO R.O.W. RAILS TO THE
WEST AND ONE R.O.W. RAIL AND ONE NO. 5 REBAR w/ALUMINUM IDOT CAP TO THE EAST. A BEST FIT LINE
USING THESE FOUR MONUMENTS WAS USED TO ESTABLISHED THE CENTER'S NORTHING ON A STRAIGHT
LINE BETWEEN THE N 1/4 CORNER AND THE S 1/4 CORNER. SET NO. 4 REBAR w/OPC #16264. CORNER'S
POSITION CORRESPONDS TO ROAD STATIONING FROM THE N 1/4 CORNER.

PLAN VIEW

(SHOW A MINIMUM OF THREE REFERENCE TIES TO DURABLE PHYSICAL OBJECTS, RELEVANT MONUMENTS AND PHYSICAL
CONDITIONS THAT WILL ENABLE RECOVERY OF THE CORNER.)HELLAND ENGINEERING & SURVEYING, LTD.
1107 Technology Parkway
Cedar Falls, Iowa 50613-6951
(319)-266-0161SHINER = 8D NAIL & 1 15/16"Ø METAL SHINER
OPC = PLASTIC CAP (O=ORANGE, R=RED, Y=YELLOW)

(00') RECORDED AS

FILE NAME: 06-284C1.DWG

I hereby certify that this land surveying document was prepared
and the related survey work was performed by me or under my
direct personal supervision and that I am a duly licensed Land
Surveyor under the laws of the State of Iowa.Jeffrey P. Helland 11/01/06
Jeffrey P. Helland
License Number 16264
My license renewal date is December 31, 2007.
All pages or sheets are covered by this seal except:

LIST CORNERS TO BE INDEXED

CORNER	SECTION	TOWNSHIP	RANGE
CENTER	34	88N	13W