

File 2009-00020188

SLSI 9-94
BHCO 03-09

Land Survey Monuments situated in Section 32 , Township 88 N ,
Range 13 W , of the Fifth Principal Meridian, BLACK HAWK County, Iowa.
Previously recorded in Misc. Book 335 , Page 086 , in County Recorder's Office.

(Show reason for preparing this certificate): The corner monument has been Replaced or Modified, per Ia. Code 355.11(1)(c)

(Evidence and detailed procedures used in establishing the corner position(s) and monumentation found or placed.)

Monument Description and Remarks: N.E. COR., FOUND 5/8"Ø REBAR IN ASPHALT PAVING @ INTERSECTION OF ANSBOROUGH AVE., PER CURRENT RECORD. CORNER TEMP. REF. PER RTK GPS, AND EXIST. PVMT. MILLED 1-1/2" & BASE WIDENED TO ±26' WIDTH WITH 2-1/2" H.M.A. SURFACE COURSE ADDED. CORNER LOC. CORED 4"Ø AT FULL DEPTH ACC (13" DEEP), WITH STUB REBAR FOUND BENT IN N.W. SIDE OF CORE. NO MAGNETIC SOUNDING REMAINS @ CORE LOCATION. RESET CORNER PER RTK GPS REF. WITH ±18" L. x 5/8" REBAR FLUSH w/HMA SURFACE. PATCHED CORE WITH ACC/HMA MIX, WITH CORNER LOCATED @ 0.65' NORTH OF C.L. HMA/ACC PAVING JOINT. NO WPA RECORD MEASURE DENOTED FOR NORTH LINE OF SECTION 32 & 33.

NOTE: ALL DISTANCES PLUMB/HORIZ.
(H.D.), "UNLESS DENOTED".

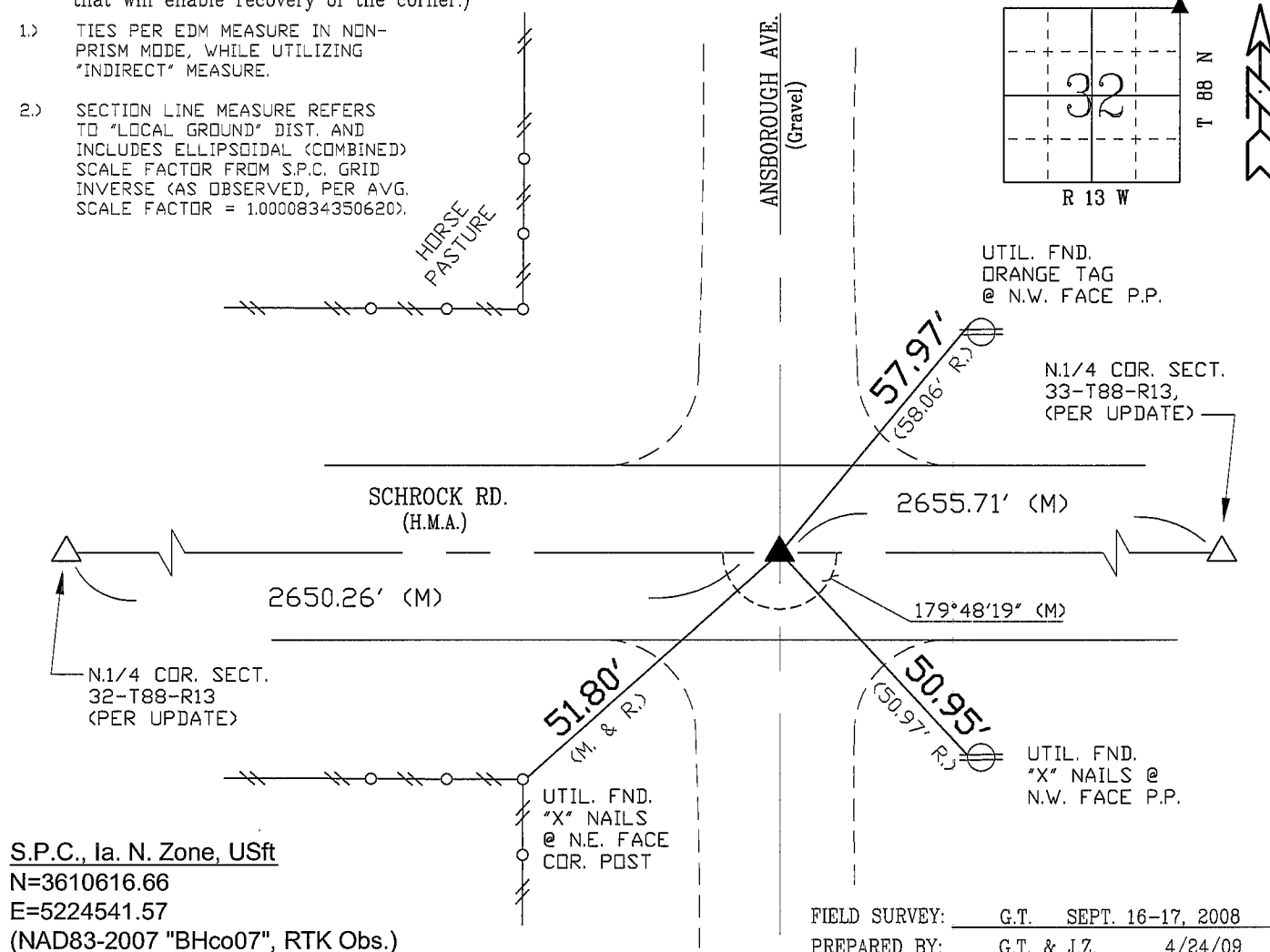
"NOT TO SCALE"

BHco Hist. Ties: BK. #1001 p.32 88-13

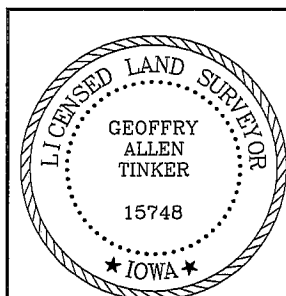
FIELD BOOK: BHco. #488 p.37

(Show a minimum of three reference ties to durable physical objects, relevant monuments and physical conditions that will enable recovery of the corner.)

- 1.) TIES PER EDM MEASURE IN NON-PRISM MODE, WHILE UTILIZING "INDIRECT" MEASURE.
- 2.) SECTION LINE MEASURE REFERS TO "LOCAL GROUND" DIST. AND INCLUDES ELLIPSOIDAL (COMBINED) SCALE FACTOR FROM S.P.C. GRID INVERSE (AS OBSERVED, PER AVG. SCALE FACTOR = 1.0000834350620).



LIST CORNERS TO BE INDEXED



I hereby certify that this land surveying document was prepared and the related survey work was performed by me or under my direct personal supervision and that I am a duly licensed Land Surveyor under the laws of the State of Iowa.

Geoffrey Allen Tinker 04/27/2009
Geoffrey Allen Tinker (date)

License Number 15748

My license renewal date is December 31, 2010

Pages or sheets covered by this seal:

This Land Corner Certificate Only.

<u>Corner</u>	<u>Section -</u>	<u>Township -</u>	<u>Range</u>
N.E. Cor.	32	88 N	13 W
N.W. Cor.	33	88 N	13 W
S.E. Cor.	29	88 N	13 W
S.W. Cor.	28	88 N	13 W

INDEX OF ABBREVIATIONS

(M)	= "Measured" Dimension	"NP"	= Reflectorless EDM Meas.
(P)	= "Platted" Dimension	"MLM"	= Indirect Measure
(R)	= "Record" Dimension	"CM"	= Concrete Monument
(C)	= "Calculated" Dimension	"SM"	= Survey Marker Spike/Tag
"IGS" = Iowa Geodetic Survey			
"WPA" = Works Progress Admin. Survey			
"φ"	= per George Miller Survey (BfCo Surveyor 1858-1860)		
"s"	= per John Ball Survey (BfCo Surveyor 1866-1891)		
"N"	= per Nathan Barber Survey (BfCo Surveyor 1906-1931)		