



Doc ID: 004100150001 Type: GEN  
Kind: CORNER  
Recorded: 04/02/2010 at 01:56:17 PM  
Fee Amt: \$9.00 Page 1 of 1  
Black Hawk County Iowa  
JUDITH A MCCARTHY RECORDER

File 2010-00018300

Jeffrey P. Helland, 1107 Technology Parkway, Cedar Falls, Iowa 50613-6951, (319)-266-0161

## UNITED STATES PUBLIC LAND SURVEY CORNER CERTIFICATE OF

LAND SURVEY MONUMENTS SITUATED IN SECTION NO. 30, TOWNSHIP NO. 88 NORTH, RANGE  
NO. 13 WEST OF THE FIFTH PRINCIPAL MERIDIAN, BLACK HAWK COUNTY, IOWA.  
PREVIOUSLY RECORDED IN DOC. #2007026510

(SHOW REASON FOR PREPARING THIS CERTIFICATE, THE EVIDENCE AND DETAILED PROCEDURES USED IN ESTABLISHING THE  
CORNER POSITIONS AND MONUMENTATION FOUND OR PLACED.)

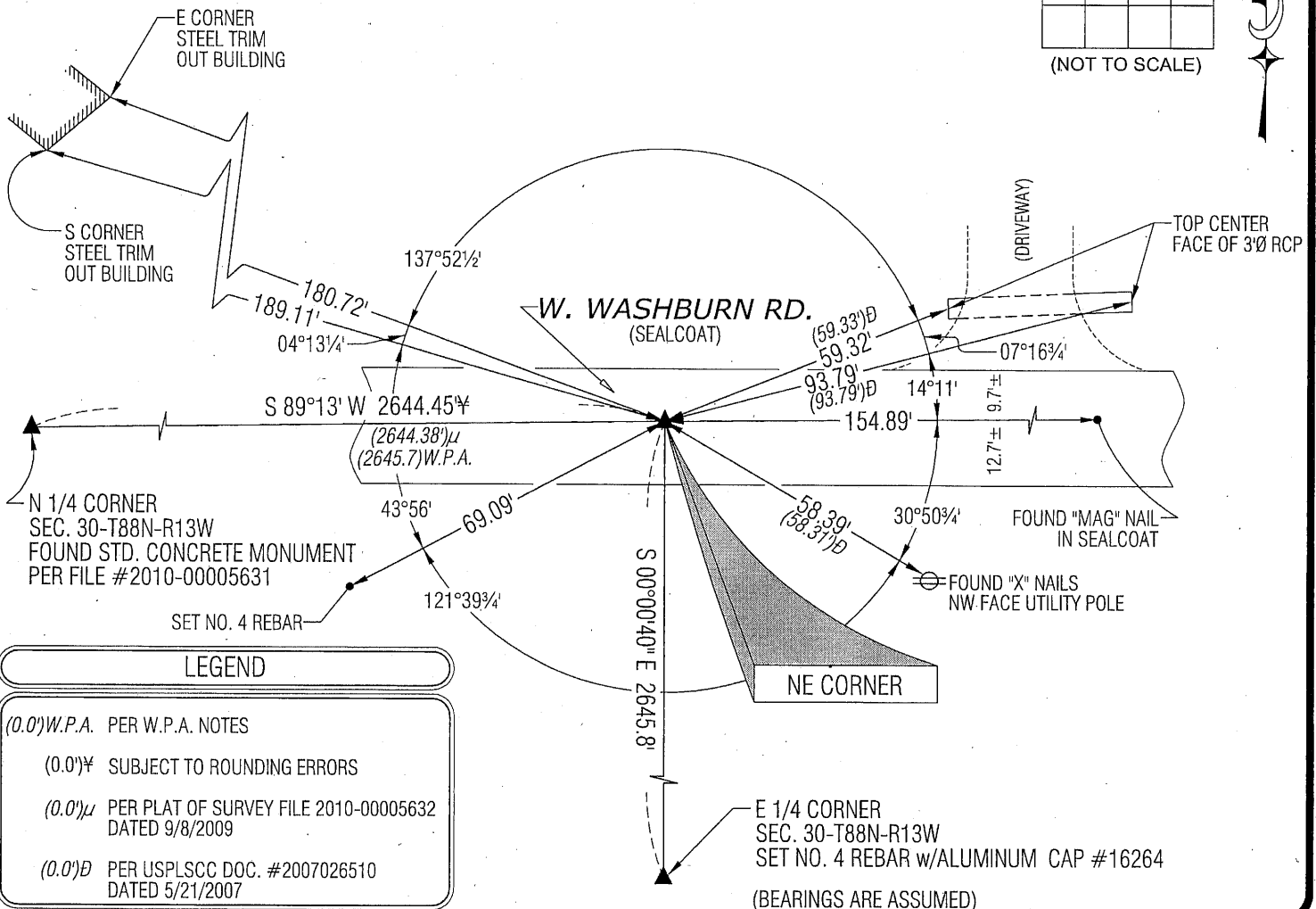
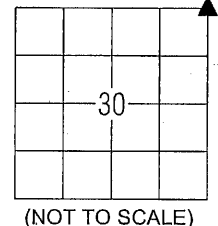
### MONUMENT DESCRIPTION AND REMARKS:

DOC. #2007026510 MONUMENTATION HAS CHANGED. SURVEY COMPLETED IN THE NE 1/4 OF SEC. 30-T88N-R13W.

→ **NE CORNER:** DOC. NO. 2007026510 DATED 5/21/2007 CALLS FOR [FOUND SCM STAMPED 19,20,30,29][FOUND SCM, 18"  
DEEP]. PLAT OF SURVEY FILE 2010-00005632 DATED 9/8/2009 CALLS FOR [(FOUND SCM STAMPED 19,20,30,29 18" DEEP)  
DOC. NO. 2007-26510 (NOTE: FOUND 1" REBAR 2" DEEP AT SOUTH EDGE OF MON. PLACED FOR METAL DETECTION  
PURPOSES ONLY)]. FOUND SAID 1"Ø REBAR (0.2'± DEEP), CONTINUED EXCAVATION AND FOUND A STD. CONCRETE  
MONUMENT PER DOC. #2007026510 (1.5' DEEP). SET NO. 4 REBAR (1.3' LONG) w/ALUMINUM CAP #16264 ABOVE, AND  
0.18' NORTH AND 0.11' EAST OF SAID 1"Ø REBAR.

### PLAN VIEW

(SHOW A MINIMUM OF THREE REFERENCE TIES TO DURABLE PHYSICAL OBJECTS, RELEVANT MONUMENTS AND PHYSICAL  
CONDITIONS THAT WILL ENABLE RECOVERY OF THE CORNER.)



#### LEGEND

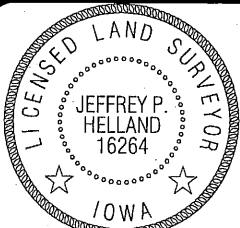
- (0.0') W.P.A. PER W.P.A. NOTES
- (0.0') ± SUBJECT TO ROUNDING ERRORS
- (0.0') μ PER PLAT OF SURVEY FILE 2010-00005632 DATED 9/8/2009
- (0.0') Ø PER USPLSCC DOC. #2007026510 DATED 5/21/2007

(BEARINGS ARE ASSUMED)



HELLAND ENGINEERING & SURVEYING, LTD.  
1107 Technology Parkway  
Cedar Falls, Iowa 50613-6951  
(319)-266-0161

SHINER = 8D NAIL & 1 5/16"Ø METAL SHINER  
BRASS TAG = 13/16"Ø BRASS TAG  
OPC = PLASTIC CAP (O=ORANGE, R=RED, Y=YELLOW)  
(00') RECORDED AS FILE NAME: 10-13201.DWG



I hereby certify that this land surveying document was prepared  
and the related survey work was performed by me or under my  
direct personal supervision and that I am a duly licensed Land  
Surveyor under the laws of the State of Iowa.

Jeffrey P. Helland 3/26/10  
Jeffrey P. Helland  
License Number 16264  
My license renewal date is December 31, 2011.  
All pages or sheets are covered by this seal except:

#### LIST CORNERS TO BE INDEXED

| CORNER    | SECTION | TOWNSHIP | RANGE |
|-----------|---------|----------|-------|
| NE CORNER | 30      | 88N      | 13W   |
| SE CORNER | 19      | 88N      | 13W   |
| SW CORNER | 20      | 88N      | 13W   |
| NW CORNER | 29      | 88N      | 13W   |