



Doc ID: 004100130001 Type: GEN  
Kind: CORNER  
Recorded: 04/02/2010 at 01:55:48 PM  
Fee Amt: \$9.00 Page 1 of 1  
Black Hawk County Iowa  
JUDITH A MCCARTHY RECORDER

File 2010-00018298

Jeffrey P. Helland, 1107 Technology Parkway, Cedar Falls, Iowa 50613-6951, (319)-266-0161

## UNITED STATES PUBLIC LAND SURVEY CORNER CERTIFICATE OF

LAND SURVEY MONUMENTS SITUATED IN SECTION NO. 30, TOWNSHIP NO. 88 NORTH, RANGE  
NO. 13 WEST OF THE FIFTH PRINCIPAL MERIDIAN, BLACK HAWK COUNTY, IOWA.

PREVIOUSLY RECORDED IN N/A

(SHOW REASON FOR PREPARING THIS CERTIFICATE, THE EVIDENCE AND DETAILED PROCEDURES USED IN ESTABLISHING THE  
CORNER POSITIONS AND MONUMENTATION FOUND OR PLACED.)

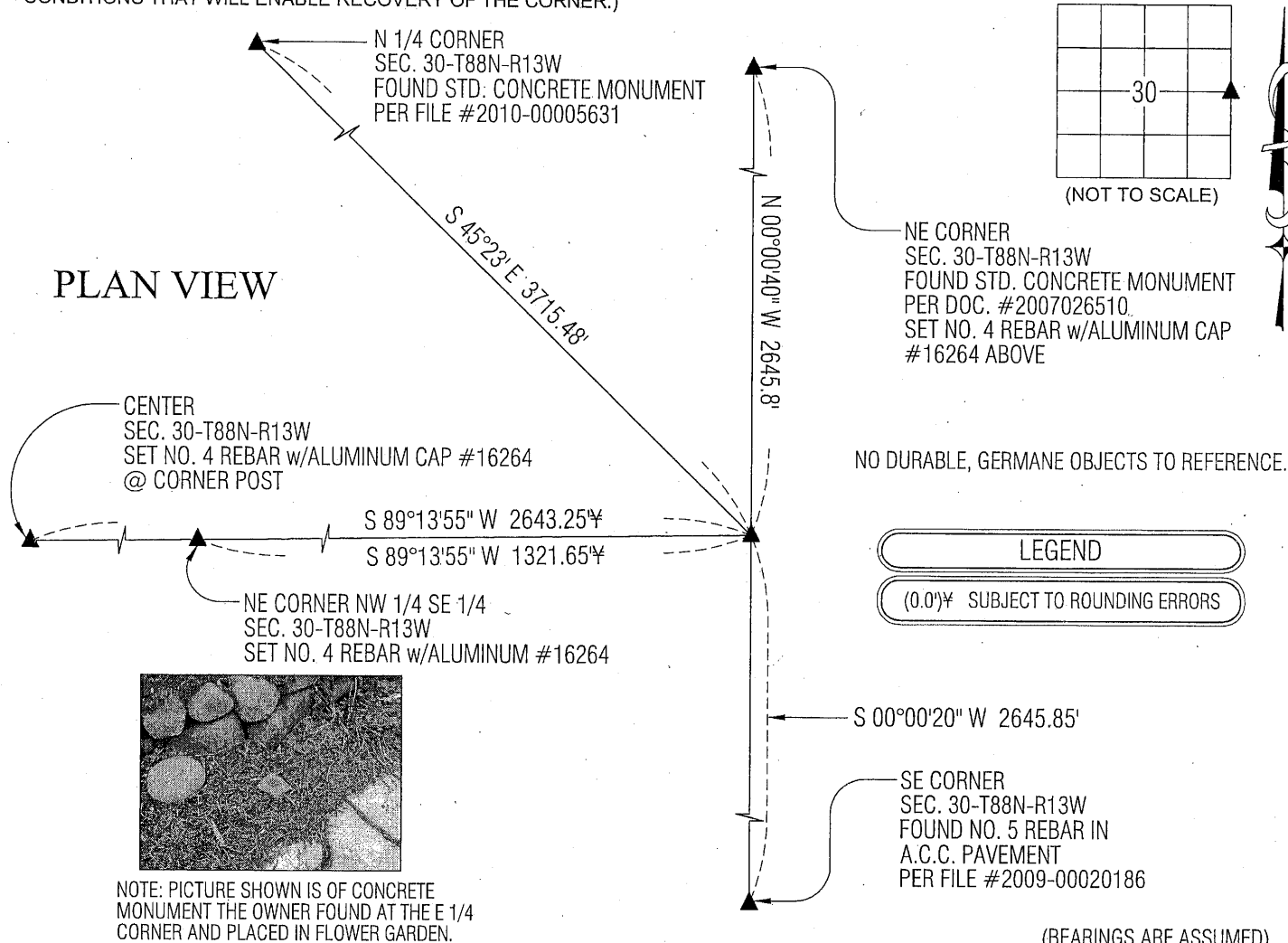
### MONUMENT DESCRIPTION AND REMARKS:

NO USPLSCC ON FILE. SURVEY COMPLETED IN THE NE 1/4 OF SEC. 30-T88N-R13W.

→ **E 1/4 CORNER:** AUDITOR'S SURVEY BOOK 1 PAGE 121 BY J. BALL DATED JUNE 26, 1877 CALLS FOR [FENCE POST IN OLD  
MOUND MARKED 1/4s]. W.P.A. NOTES DATED 10/24/1940 CALL FOR [FOUND NIGGERHEAD 10"x11"x8", LOWERED ALL  
EVIDENCE IN PLACE AND SET C.M. ON TOP WITH CAP MARKED 30+29, SET TOP OF C.M. 12" DEEP.]. ALL COUNTY TIES  
OBLITERATED. W.P.A. CHAINING NOTED APPEAR TO BE INCORRECT PER GEOFFREY TINKER, P.L.S. WITH THE BLACK HAWK  
COUNTY ENGINEER'S OFFICE. AFTER DISCUSSING THE CORNER WITH THOMAS SCHRADER, OWNER OF THE NORTHEAST  
QUARTER OF SECTION 30, HE STATED HE ACCIDENTALLY REMOVED THE C.M. WHEN GRADING IN THE AREA. THE C.M. NOW  
RESIDES IN HIS GARDEN LOCATED AT 2115 W. WASHBURN ROAD. ESTABLISHED A POINT BY SINGLE PROPORTION DISTANCE  
BETWEEN THE NORTHEAST CORNER AND SOUTHEAST CORNER OF SAID SECTION AND EXCAVATED A 2'± AREA AND FOUND  
A LARGE GRANITE BOULDER IN P.C.C. WITH OTHER SMALLER STONES JUST BELOW THE SURFACE, DIAMETER OF CLUSTER  
WAS 1.8'±. FOUND ROTTEN WOOD STAKE AT SOUTH EDGE OF CLUSTER OF STONES, 1.0' BELOW THE SURFACE. SET NO. 4  
REBAR WITH ALUMINUM CAP #16264 AT CENTER OF SAID WOODEN STAKE.

(SHOW A MINIMUM OF THREE REFERENCE TIES TO DURABLE PHYSICAL OBJECTS, RELEVANT MONUMENTS AND PHYSICAL  
CONDITIONS THAT WILL ENABLE RECOVERY OF THE CORNER.)

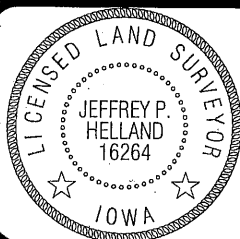
### PLAN VIEW



HELLAND ENGINEERING & SURVEYING, LTD.

1107 Technology Parkway  
Cedar Falls, Iowa 50613-6951  
(319)-266-0161

SHINER = 8D NAIL & 1 5/16"Ø METAL SHINER  
BRASS TAG = 13/16"Ø BRASS TAG  
OPC = PLASTIC CAP (O=ORANGE, R=RED, Y=YELLOW)  
(00') RECORDED AS FILE NAME: 10-132C4.DWG



I hereby certify that this land surveying document was prepared  
and the related survey work was performed by me or under my  
direct personal supervision and that I am a duly licensed Land  
Surveyor under the laws of the State of Iowa.

Jeffrey P. Helland 3/25/10  
Jeffrey P. Helland  
License Number 16264  
My license renewal date is December 31, 2011.  
All pages or sheets are covered by this seal except:

### LIST CORNERS TO BE INDEXED

CORNER	SECTION	TOWNSHIP	RANGE
E 1/4 CORNER	30	88N	13W
W 1/4 CORNER	29	88N	13W