

Jeffrey P. Helland, 1107 Technology Parkway, Cedar Falls, Iowa 50613-6951, (319)-266-0161

## UNITED STATES PUBLIC LAND SURVEY CORNER CERTIFICATE OF

LAND SURVEY MONUMENTS SITUATED IN SECTION NO. 30, TOWNSHIP NO. 88 NORTH, RANGE  
NO. 13 WEST OF THE FIFTH PRINCIPAL MERIDIAN, BLACK HAWK COUNTY, IOWA.  
PREVIOUSLY RECORDED IN N/A

(SHOW REASON FOR PREPARING THIS CERTIFICATE, THE EVIDENCE AND DETAILED PROCEDURES USED IN ESTABLISHING THE  
CORNER POSITIONS AND MONUMENTATION FOUND OR PLACED.)

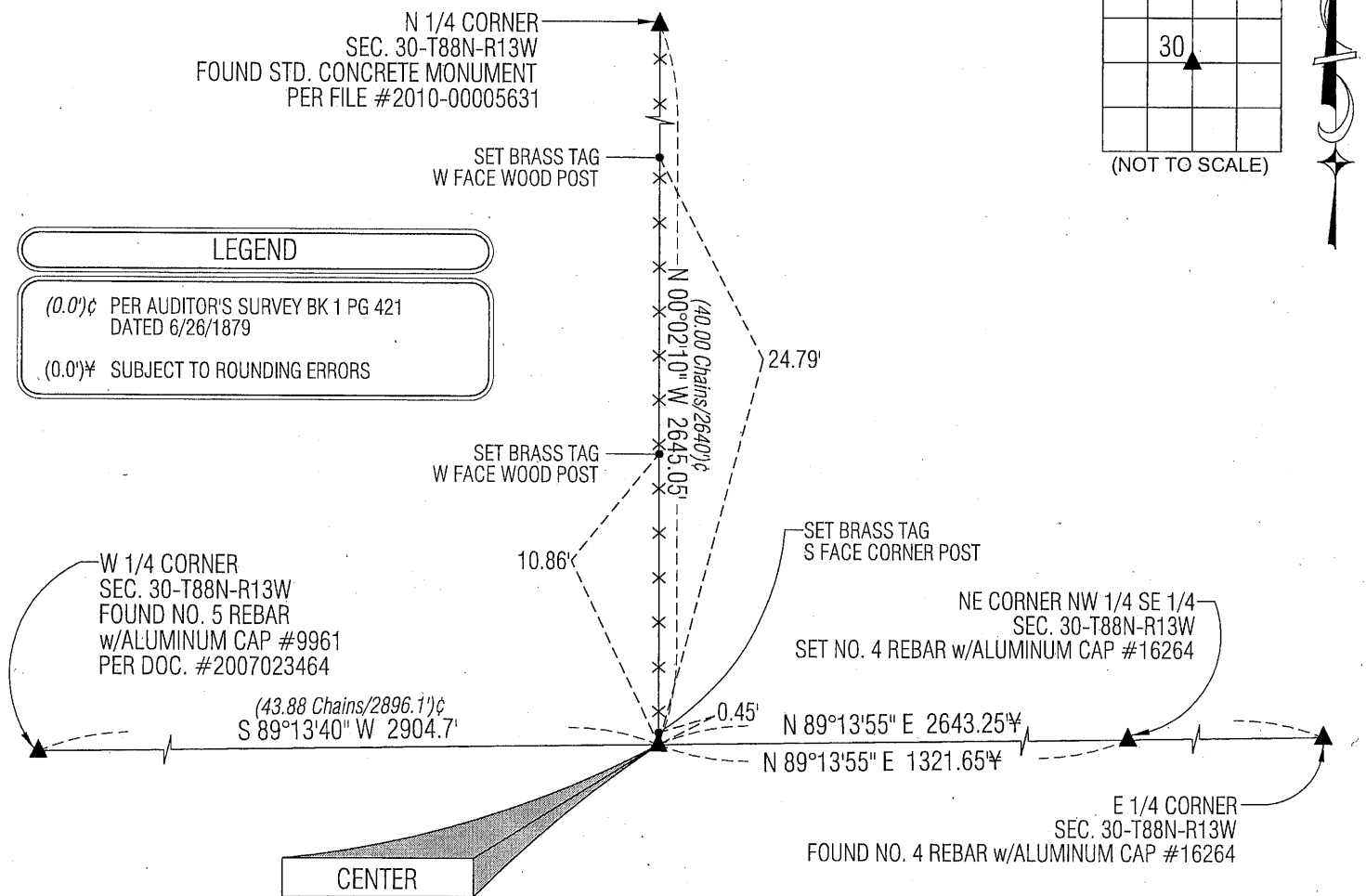
### MONUMENT DESCRIPTION AND REMARKS:

NO USPLSCC ON FILE. SURVEY COMPLETED IN THE NE 1/4 OF SEC. 30-T88N-R13W.

— **CENTER:** NO BLACK HAWK COUNTY REFERENCE TIES AVAILABLE. AUDITOR'S SURVEY BOOK 1 PAGE 121 BY J. BALL DATED  
JUNE 26, 1877 CALLS FOR [STONE]. PROBED AROUND WOOD CORNER POST AND FOUND NOTHING. FOUND LARGE PINK  
GRANITE STONE IN THE SHAPE OF A FRUSTRUM OF A PYRAMID ( $28'' \pm$  N-S x  $15'' \pm$  E-W x  $12'' \pm$  VERTICALLY AT ITS BASE)  
LYING ON THE SURFACE JUST NORTHWEST OF CORNER POST. STONE MAY HAVE BEEN THE CORNER SET BY BALL, BUT  
BECAUSE IT'S POINT IS LAYING HORIZONTALLY IT APPEARS TO HAVE BEEN MOVED AND REPLACED WITH CORNER POST.  
CORNER POST IS LEANING NORTHERLY. THEREFORE, SET NO. 4 REBAR WITH ALUMINUM CAP #16264 @ SOUTH EDGE OF  
WOOD CORNER POST (POST IS LEANING  $15^\circ$  NORTH OF ZENITH) AT POSITION OF CORNER POST IF POST WAS AT  $0^\circ$  ZENITH.

### PLAN VIEW

(SHOW A MINIMUM OF THREE REFERENCE TIES TO DURABLE PHYSICAL OBJECTS, RELEVANT MONUMENTS AND PHYSICAL  
CONDITIONS THAT WILL ENABLE RECOVERY OF THE CORNER.)



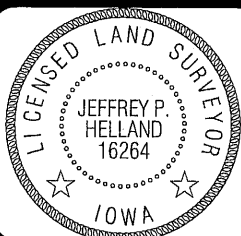
(BEARINGS ARE ASSUMED)



HELLAND ENGINEERING & SURVEYING, LTD.

1107 Technology Parkway  
Cedar Falls, Iowa 50613-6951  
(319)-266-0161

SHINER = 8D NAIL & 1 5/16" Ø METAL SHINER  
BRASS TAG = 13/16" Ø BRASS TAG  
OPC = PLASTIC CAP (O=ORANGE, R=RED, Y=YELLOW)  
(00) RECORDED AS FILE NAME: 10-132C3.DWG



I hereby certify that this land surveying document was prepared  
and the related survey work was performed by me or under my  
direct personal supervision and that I am a duly licensed Land  
Surveyor under the laws of the State of Iowa.

*Jeffrey P. Helland* 3/26/10  
Jeffrey P. Helland  
License Number 16264  
My license renewal date is December 31, 2011.  
All pages or sheets are covered by this seal except:

### LIST CORNERS TO BE INDEXED

CORNER	SECTION	TOWNSHIP	RANGE
CENTER	30	88N	13W