

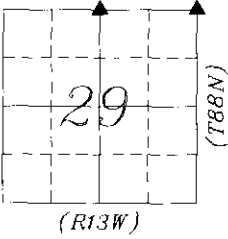
SW

PREPARED BY - CLAPSADDLE-GARBER ASSOCIATES, INC, 16 EAST MAIN STREET, P.O. BOX 754, MARSHALLTOWN, IOWA 50158 - PHONE 641-752-6701

UNITED STATES PUBLIC LAND SURVEY CORNER CERTIFICATE
OF

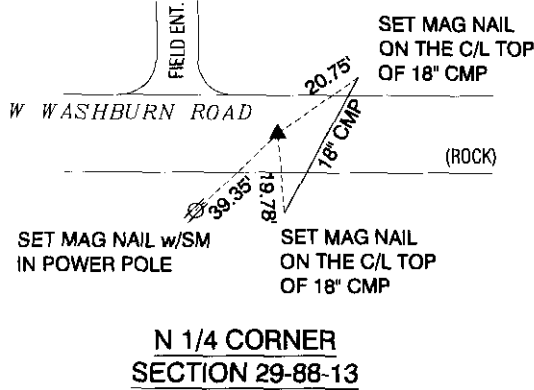
Land Survey Monuments situated in Section 29, Township 88 NORTH, Range 13 WEST, of the Fifth Principal Meridian, BLACK HAWK County, Iowa.
Previously recorded in Book 345, Page 583, Instrument # 2007026510

THIS CERTIFICATE WAS PREPARED BECAUSE THESE CORNERS WERE USED DURING A PLAT OF SURVEY IN THE WEST 1/2 OF THE NE 1/4 SECTION 29-88-13, CORNERS WERE FOUND USING METHODS DESCRIBED BELOW.



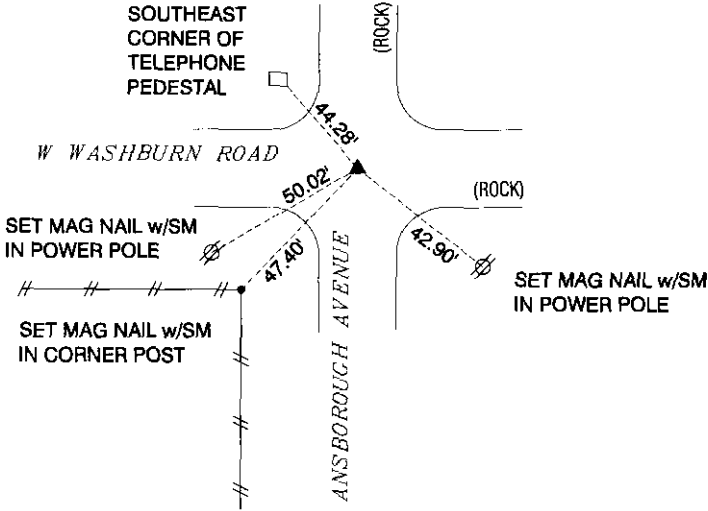
PLAN-VIEW
NO SCALE

- LEGEND:
- ▲ GOVERNMENT CORNER MONUMENT FOUND
 - △ GOVERNMENT CORNER MONUMENT SET 1/2" x 30" REBAR w/YELLOW PLASTIC ID CAP #22634
 - //— EXISTING FENCE
 - NAIL w/SM NAIL WITH SURVEY MARKER



N 1/4 CORNER
SECTION 29-88-13

FND CONCRETE MONUMENT w/ BRASS CAP (FND 1/2" REBAR w/ YELLOW PLASTIC CAP ILLEGIBLE ON SOUTH SIDE OF CONCRETE MONUMENT), USED CONCRETE MONUMENT USING TIES OBTAINED FROM COUNTY RECORDERS OFFICE PREVIOUSLY RECORDED IN INSTRUMENT NO. 2007026510



NE CORNER
SECTION 29-88-13

FND 1/2" REBAR w/ YELLOW PLASTIC CAP #8033 4" DEEP
USING TIES OBTAINED FROM COUNTY RECORDERS OFFICE PREVIOUSLY RECORDED IN MISC. BOOK 345, PAGE 583



Clapsaddle-Garber Associates, Inc
16 East Main Street
Marshalltown, Iowa 50158
Ph 641 752-6701
www.cgaconsultants.com

DRAWN
CAQ

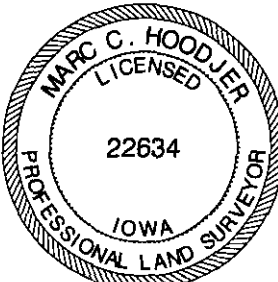
DATE
11-17-15

SHEET NO.
1

PROJECT NO.
76961.05

List Corners to be Indexed

Corners	Section	Township	Range
N 1/4 COR	29	88N	13W
NE COR	29	88N	13W



I hereby certify that this land surveying document was prepared and the related survey work was performed by me or under my direct personal supervision and that I am a duly Licensed Professional Land Surveyor under the laws of the State of Iowa.

Marc C. Hoodjer 11/23/15
date
Marc C. Hoodjer, PLS
Iowa License Number 22634
My License Renewal Date is December 31, 2016
Pages or sheets covered by this seal: THIS SHEET