

CRAWFORD ENGINEERING & SURVEYING
205 2ND AVE NE
INDEPENDENCE, IA 50644

I
P
Z

Document Number: 2007026510
Date: Jun 13, 2007 4:30:00 pm
Aud Fee: 0.00 Rec Fee: 5.00
Trans Tax: 0.00 Rec Management Fee: 1.00
E-Com Fee: 1.00 Non-Standard Page Fee: 0.00
Filed for record in Black Hawk County, Iowa
Judith A. McCarthy, County Recorder

DANIEL T. CRAWFORD, P.E. & L.S. Crawford Engineering & Surveying, Inc., Independence, Iowa 319/334-7077
UNITED STATES PUBLIC LAND SURVEY CORNER CERTIFICATE

OF

Land Survey Monuments situated in Section 29, Township 88 N, Range 13 W, of the Fifth Principal Meridian, Black Hawk County, Iowa.

Previously recorded in N/A in County Recorder's Office.

Monument Description and Remarks:

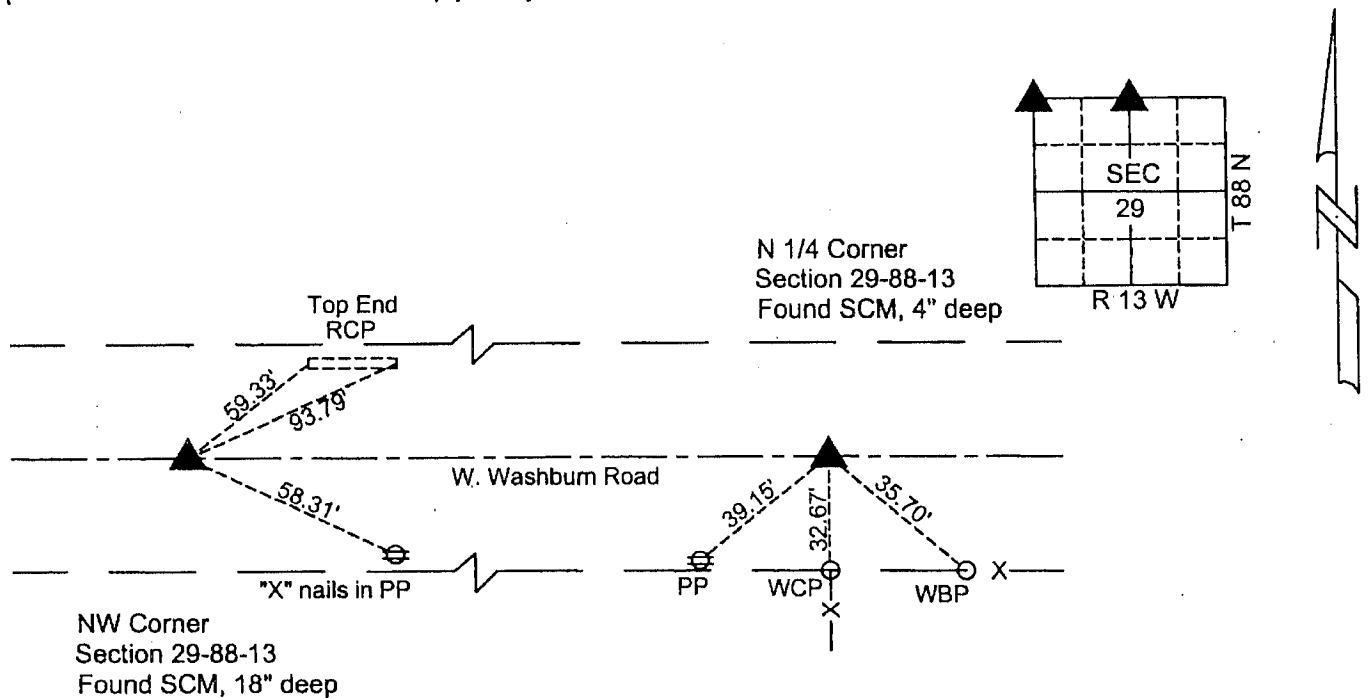
Reason for preparing certificate: Current certificate is not on file.

Evidence and detailed procedure used to establish corner position: Corner position previously established and monumented.

Monumentation found or placed: NW Corner - Found SCM stamped 19, 20, 30, 29
N 1/4 Corner - Found SCM stamped 20, 29

PLAN-VIEW

(Show a minimum of three reference ties to durable physical objects, relevant monuments and physical conditions that will enable recovery of the corner).



I hereby certify that the survey work was completed and this land surveying document was prepared by me or under my direct personal supervision and that I am a duly licensed land surveyor under the laws of the State of Iowa.

Signature: Daniel T. Crawford
DANIEL T. CRAWFORD, P.E. & L.S.

Date: 5-21-07 Reg. No. 8812

My license renewal date is December 31, 2007

List Corners to be Indexed

Corners	Section	Twp.	Range
NW Corner	29	88 N	13 W
North 1/4 Corner	29	88 N	13 W

SEAL

