

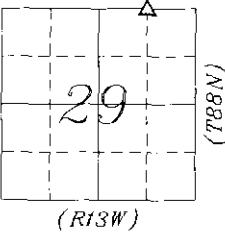
Doc ID: 006915060001 Type: GEN  
Recorded: 11/25/2015 at 10:48:47 AM  
Fee Amt: \$7.00 Page 1 of 1  
Black Hawk County Iowa  
SANDIE L. SMITH RECORDER  
File **2016-00009750**

PREPARED BY - CLAPSADDLE-GARBER ASSOCIATES, INC, 16 EAST MAIN STREET, P.O. BOX 754, MARSHALLTOWN, IOWA 50158 - PHONE 641-752-6701

UNITED STATES PUBLIC LAND SURVEY CORNER CERTIFICATE  
OF

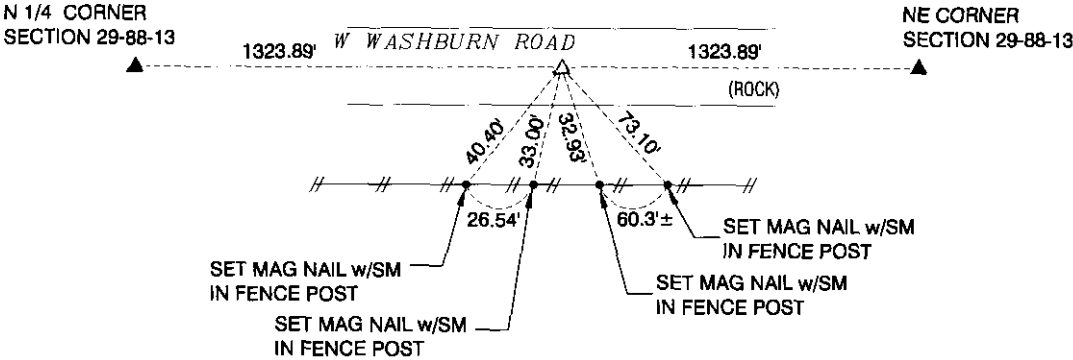
Land Survey Monuments situated in Section 29, Township 88 NORTH, Range 13 WEST, of the Fifth Principal Meridian, BLACK HAWK County, Iowa.  
Previously recorded in Book \_\_\_\_\_, Page \_\_\_\_\_, Instrument # \_\_\_\_\_

THIS CERTIFICATE WAS PREPARED BECAUSE THIS CORNER WAS USED DURING A PLAT OF SURVEY IN THE WEST 1/2 OF THE NE 1/4 SECTION 29-88-13, CORNER WERE SET USING METHODS DESCRIBED BELOW.



PLAN-VIEW  
NO SCALE

- LEGEND:
- ▲ GOVERNMENT CORNER MONUMENT FOUND
  - △ GOVERNMENT CORNER MONUMENT SET  
1/2" x 30" REBAR w/YELLOW PLASTIC  
ID CAP #22634
  - //— EXISTING FENCE
  - NAIL w/SM NAIL WITH SURVEY MARKER



NE CORNER  
NW 1/4 NE 1/4  
SECTION 29-88-13

SET 1/2" x 30" REBAR  
w/ YELLOW PLASTIC CAP #22634  
MIDWAY AND ONLINE BETWEEN  
NE CORNER AND N 1/4 CORNER

	Clapsaddle-Garber Associates, Inc 16 East Main Street Marshalltown, Iowa 50158 Ph 641 752-6701 www.cgaconsultants.com	DRAWN CAQ	SHEET NO. 1	List Corners to be Indexed	
		DATE 11-17-15	PROJECT NO. 76961.05		
	I hereby certify that this land surveying document was prepared and the related survey work was performed by me or under my direct personal supervision and that I am a duly Licensed Professional Land Surveyor under the laws of the State of Iowa. <i>Marc C. Hoodjer</i> Marc C. Hoodjer, PLS Iowa License Number 22634 My License Renewal Date is December 31, 2016 Pages or sheets covered by this seal: THIS SHEET				
	Corners NE COR NW1/4 NE1/4			Section 29	Township 88N