

PROOF

FILED FOR RECORD JUN 19

2002

AT 11:30A. M.

FEE N/C

COMPARED

Richard L. King

BLACK HAWK COUNTY RECORDER

BLACK HAWK COUNTY ENGINEER

PREPARED BY: BLACK HAWK COUNTY ENGINEERS OFFICE
316 E. FIFTH STREET, ROOM 211 WATERLOO, IOWA 50703PH.# (319) 833-3008
FAX.# (319) 833-3139SLSI 9-94
CERT 12-96

UNITED STATES PUBLIC LAND SURVEY CORNER CERTIFICATE OF
Land Survey Monuments situated in Section 29, Township 88 N,
Range 13 W, of the Fifth Principal Meridian, BLACK HAWK County, Iowa.
Previously recorded in Misc. Book N/A, Page N/A, in County Recorder's Office.

(Show reason for preparing this certificate, the evidence and detailed procedures used in establishing the corner positions and monumentation found or placed.)

Monument Description and Remarks: E. 1/4 CORNER SECTION 29-88-13
FOUND STD. C.M. BENT @ ROAD SURFACE W/ SPIRAL REBAR @ N. FACE, PER
RECORD WPA NOTES. CM BROKE @ 9" DEEP, LOWERED SPIRAL REBAR TO
TOP OF C.M., AND ESTABLISHED MAG. NAIL IN CENTER OF C.M. BEING LOC.
9" DEEP IN CENTER OF GRAVEL ROAD AND ALIGNED WITH FENCE WEST.

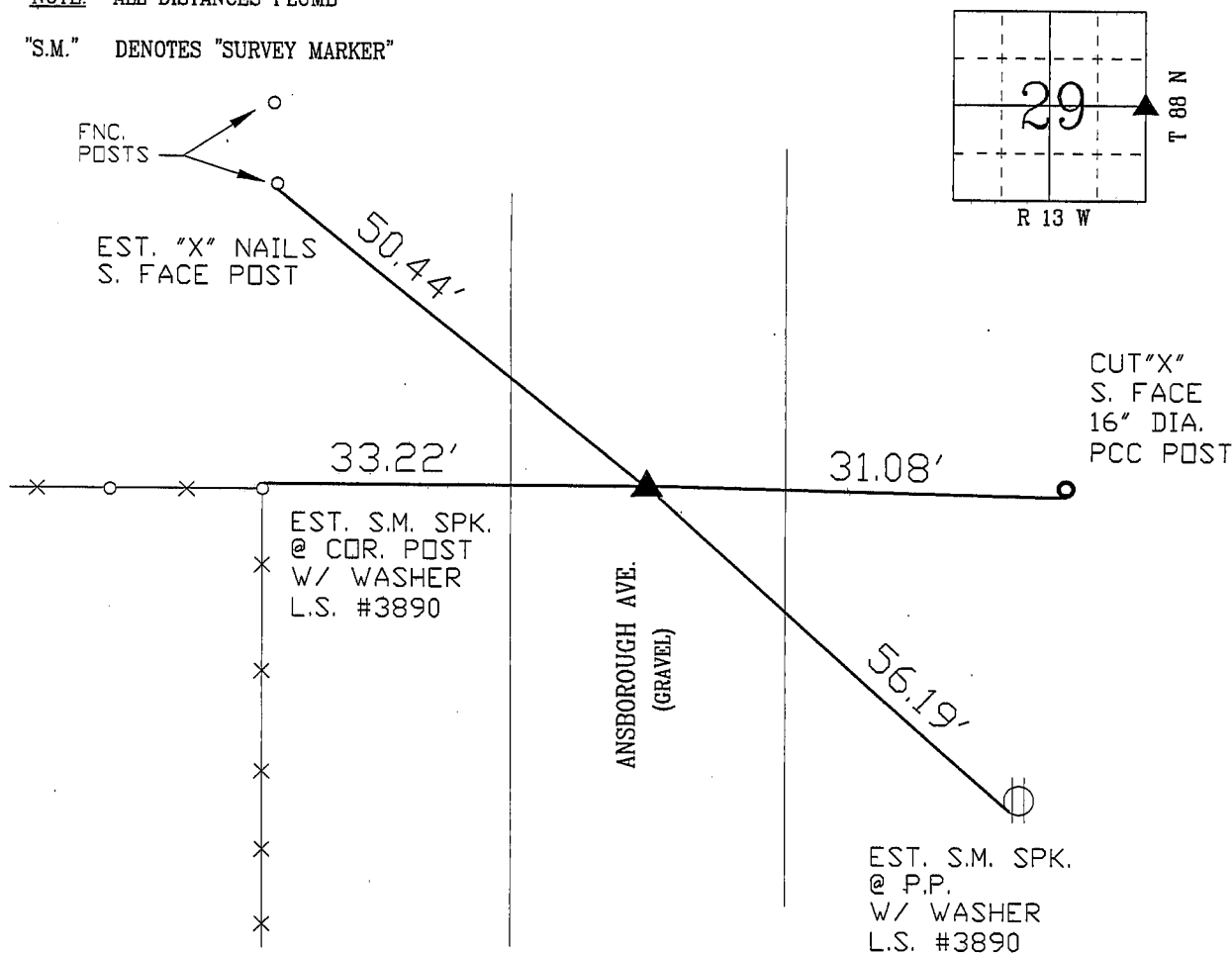
PLAN - VIEW

(Show a minimum of three reference ties to durable physical objects, relevant monuments and physical conditions that will enable recovery of the corner.)

NOT TO SCALE

NOTE: ALL DISTANCES PLUMB

"S.M." DENOTES "SURVEY MARKER"



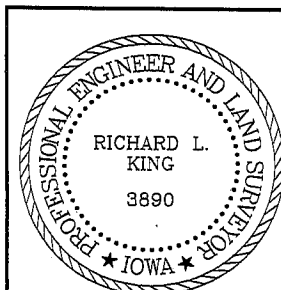
FIELD SURVEY: G.T. / C.W. / M.C. 5/28/02

PREPARED BY: M.C. / G.T. 06/17/02

CERTIFICATION

LIST CORNERS TO BE INDEXED

Corner	Section	Township	Range
E. 1/4	29	88 N	13 W
W. 1/4	28	88 N	13 W



I hereby certify that this land surveying document was prepared and the related survey work was performed by me or under my direct personal supervision and that I am a duly licensed Land Surveyor under the laws of the State of Iowa.

Richard L. King 5/19/02
Richard L. King (date)

License Number 3890

My license renewal date is December 31, 2003

Pages or sheets covered by this seal:

This Land Corner Certificate Only.