

Doc ID: 006915050001 Type: GEN
Recorded: 11/25/2015 at 10:48:20 AM
Fee Amt: \$7.00 Page 1 of 1
Black Hawk County Iowa
SANDIE L. SMITH RECORDER
File **2016-00009749**

EW

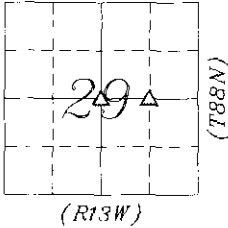
PREPARED BY - CLAPSADDLE-GARBER ASSOCIATES, INC, 16 EAST MAIN STREET, P.O. BOX 754, MARSHALLTOWN, IOWA 50158 - PHONE 641-752-6701

UNITED STATES PUBLIC LAND SURVEY CORNER CERTIFICATE
OF

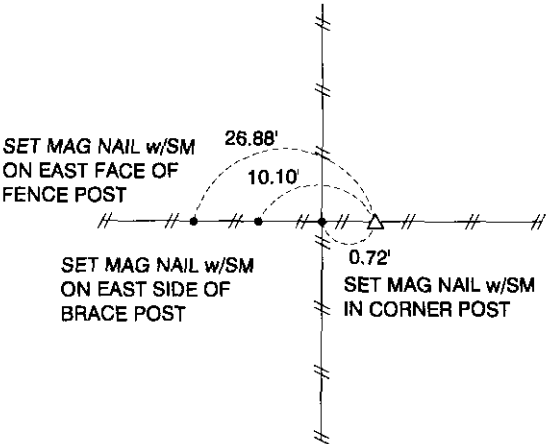
Land Survey Monuments situated in Section 29, Township 88 NORTH, Range 13 WEST, of the Fifth Principal Meridian, BLACK HAWK County, Iowa.
Previously recorded in Book _____, Page _____, Instrument # _____

THIS CERTIFICATE WAS PREPARED BECAUSE THESE CORNERS WERE USED DURING A PLAT OF SURVEY IN THE WEST 1/2 OF THE NE 1/4 SECTION 29-88-13, CORNERS WERE SET USING METHODS DESCRIBED BELOW.

PLAN-VIEW
NO SCALE

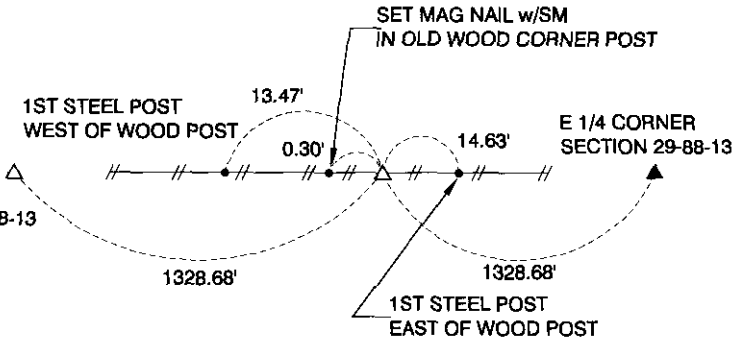


- LEGEND:
- ▲ GOVERNMENT CORNER MONUMENT FOUND
 - △ GOVERNMENT CORNER MONUMENT SET
1/2" x 30" REBAR w/YELLOW PLASTIC
ID CAP #22634
 - EXISTING FENCE
 - NAIL w/SM NAIL WITH SURVEY MARKER



CENTER
SECTION 29-88-13

SET 1/2" x 30" REBAR
w/ YELLOW PLASTIC CAP #22634
NO MONUMENT ON RECORD
PROBED 2' DIA. AREA FROM EXISTING
CORNER POST, FND PIECES OF A RED
GRANITE STONE AND REMANENCE OF
OLDER CORNER POST 2.5' DEEP, USED
THIS POSITION FOR CORNER



SE CORNER
SW 1/4 NE 1/4
SECTION 29-88-13

SET 1/2" x 30" REBAR
w/ YELLOW PLASTIC CAP #22634
MIDWAY AND ON LINE BETWEEN
CENTER AND E 1/4 CORNER

	Clapsaddle-Garber Associates, Inc 16 East Main Street Marshalltown, Iowa 50158 Ph 641 752-6701 www.cgaconsultants.com	DRAWN CAQ	SHEET NO. 1	List Corners to be Indexed	
		DATE 11-17-15	PROJECT NO. 76961.05		
	I hereby certify that this land surveying document was prepared and the related survey work was performed by me or under my direct personal supervision and that I am a duly Licensed Professional Land Surveyor under the laws of the State of Iowa. Marc C. Hoodjer, BLS Iowa License Number 22634 My License Renewal Date is December 31, 2016 Pages or sheets covered by this seal: THIS SHEET	Corners			
		CENTER			
SE COR SW 1/4 NE 1/4			29	88N	13W

28.00 ✓ KK

(7)