

BLACK HAWK COUNTY ENGINEER

PREPARED BY: BLACK HAWK COUNTY ENGINEERS OFFICE PH.# (319) 291-2419 SLSI 9-94
316 E. FIFTH STREET, ROOM 211 WATERLOO, IOWA 50703 FAX.# (319) 291-2461 CERT 12-96

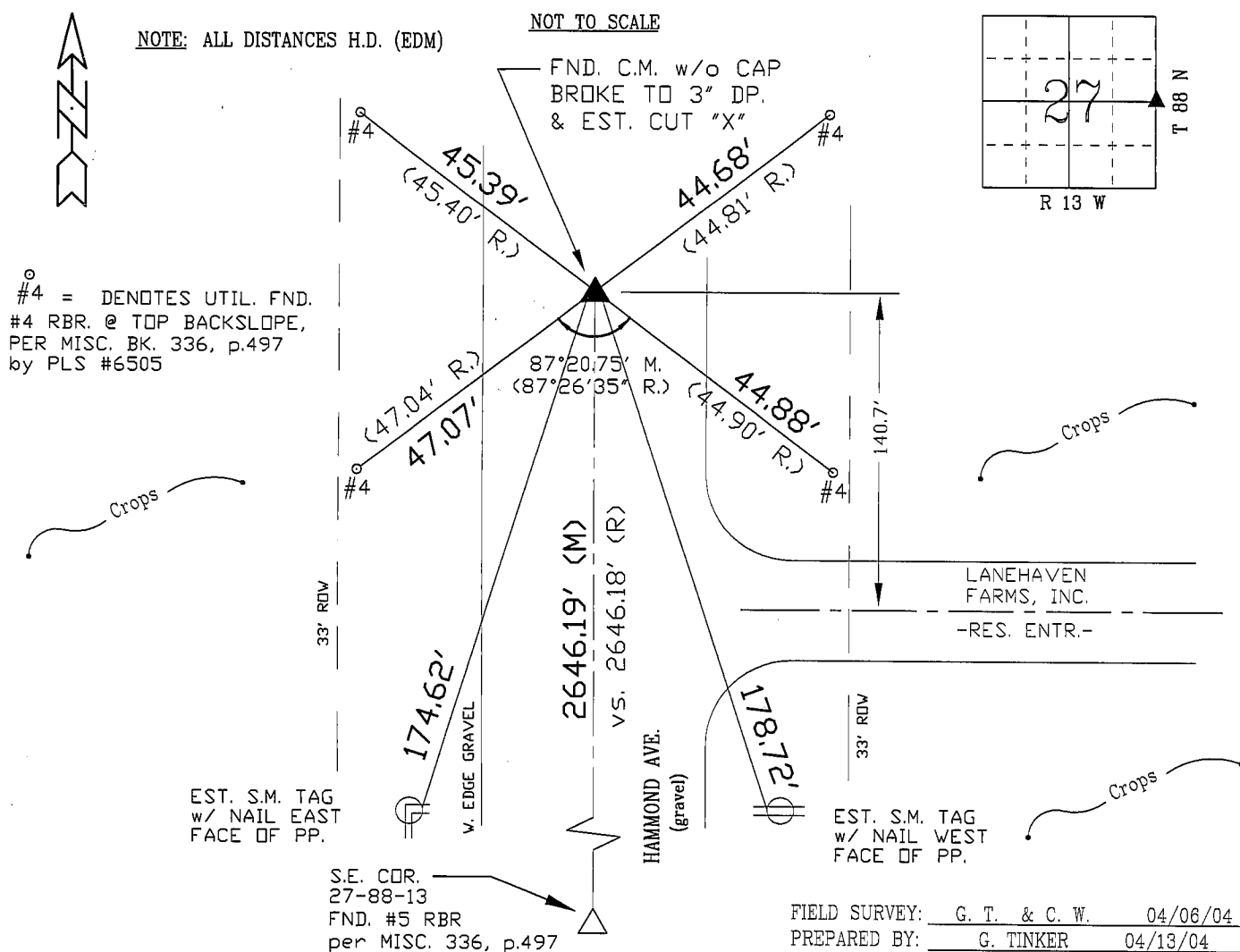
UNITED STATES PUBLIC LAND SURVEY CORNER CERTIFICATE OF
Land Survey Monuments situated in Section 27, Township 88 N,
Range 13 W, of the Fifth Principal Meridian, BLACK HAWK County, Iowa.
Previously recorded in Misc. Book 336, Page 497, in County Recorder's Office.

(Show reason for preparing this certificate, the evidence and detailed procedures used in establishing the corner positions and monumentation found or placed.)

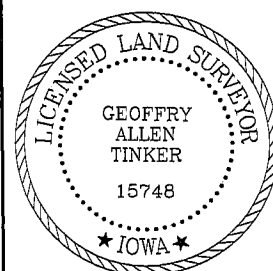
Monument Description and Remarks: FOUND STD. WPA C.M. WITH TOP OFF
LOC. JUST ABOVE ROAD SURFACE, WITH #5 TWISTED BAR ALONG N. FACE OF
MONUMENT. TOPPED OFF C.M. TO 3" DEEP AND LOWERED TWISTED BAR BELOW
TOP, THEN EST. CUT "X" IN TOP OF C.M. AND RETIED.
CORNER FILED TO LOWER BELOW ROAD SURFACE AND UPDATE & REFERENCE
RECORD TIES.

PLAN - VIEW

(Show a minimum of three reference ties to durable physical objects, relevant monuments and physical conditions that will enable recovery of the corner.)



CERTIFICATION



I hereby certify that this land surveying document was prepared and the related survey work was performed by me or under my direct personal supervision and that I am a duly licensed Land Surveyor under the laws of the State of Iowa.

Geoffrey A. Tinker 04/13/04
Geoffrey Allen Tinker (date)

License Number 15748

My license renewal date is December 31, 2004

Pages or sheets covered by this seal:

This Land Corner Certificate Only.

LIST CORNERS TO BE INDEXED

Corner	Section	Township	Range
E. 1/4	27	88 N	13 W
W. 1/4	26	88 N	13 W