

Number: 202300006248
Recorded: 10/17/2022 at 11:10:14.0 AM
County Recording Fee: \$7.00
Iowa E-Filing Fee: \$3.00
Combined Fee: \$10.00
Revenue Tax:
Sandie L. Smith, RECORDER
Black Hawk County, Iowa

Prepared by & Return to: Herold - Reicks Surveying, 2206 East Bremer Avenue, Waverly, IA 50677, Ph. 319-463-5187

United States Public Land Survey Corner Certificate

Land Survey Monument situated in
Section 26, Township 88 North, Range 13 West of the Fifth Principal Meridian, Black Hawk County, Iowa.
On file in Document #2007-10988 in the County Recorder's Office.

This certificate is being prepared in compliance with Iowa Code Chapter 355.11 because:



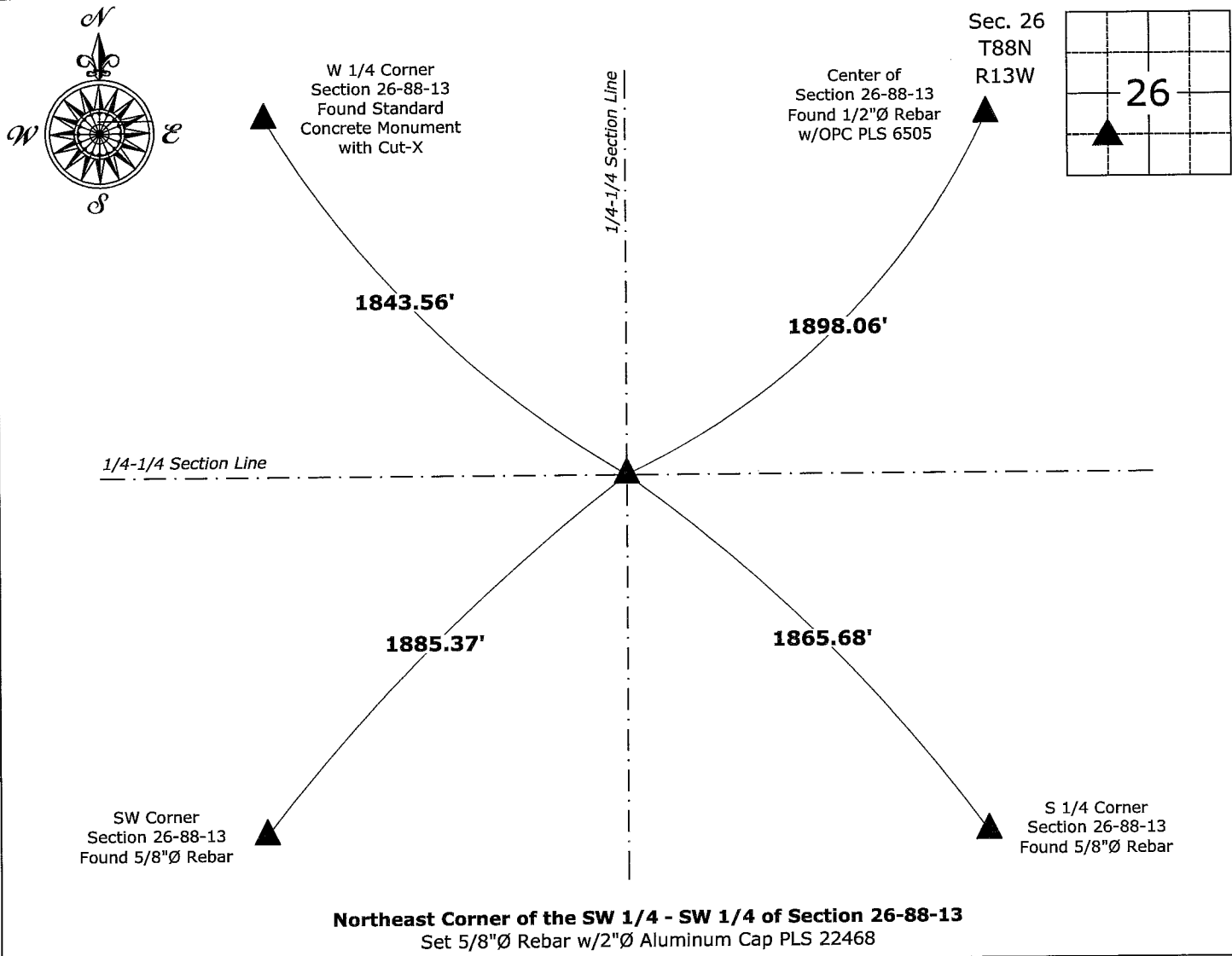
- ☐ There is no certificate on file for this corner.
- ☒ There are no longer three valid ties of record.
- ☐ There are changes to reference ties of record.
- ☒ There is change of monumentation of record.
- ☐ To clarify description of record monument (ties).

Monument Description and Remarks:

Northeast Corner of the SW 1/4 - SW 1/4: Found 14" x 6" Granite Stone, 18" Deep, with information obtained from the previously recorded Section Corner Certificate. Drilled a hole in the top center of stone and Set 5/8"Ø Rebar w/2"Ø Aluminum Cap PLS 22468 in the hole and above the stone to perpetuate the corner.

Plan View

(Show a minimum of three reference ties to durable physical objects, relevant monuments and physical conditions that will enable recovery of the corner.)



I hereby certify that this land surveying document was prepared and the related survey work was performed by me or under my direct personal supervision and that I am a duly licensed Land Surveyor under the laws of the State of Iowa.

Isaiah M. Reicks 10-14-22
Isaiah M. Reicks Date:
License number 22468
My license renewal date is December 31, 2023.
Sheets covered by this seal: Individual sheet only

List Corner to be Indexed			
Corner	Section	Twp.	Range
NE-SW-SW	26	88	13
Project Number: 2022-569			
FB: Black Hawk 10, Pgs. 77-78			