

I VS  
P  
Z

Document Number: 2007010988  
Date: Nov 13, 2006 4:30:00 pm  
Aud Fee: 0.00 Rec Fee: 5.00  
Trans Tax: 0.00 Rec Management Fee: 1.00  
E-Com Fee: 1.00 Non-Standard Page Fee: 0.00  
Filed for record in Black Hawk County, Iowa  
Patricia S. Sass, County Recorder

Paul H. Helland, 1107 Technology Parkway, Cedar Falls, Iowa 50613-6951, (319)-266-0161

UNITED STATES PUBLIC LAND SURVEY CORNER CERTIFICATE  
OF

LAND SURVEY MONUMENTS SITUATED IN SECTION NO. 26, TOWNSHIP NO. 88 NORTH, RANGE NO. 13 WEST OF THE FIFTH PRINCIPAL MERIDIAN, BLACK HAWK COUNTY, IOWA.  
PREVIOUSLY RECORDED IN \_\_\_\_\_

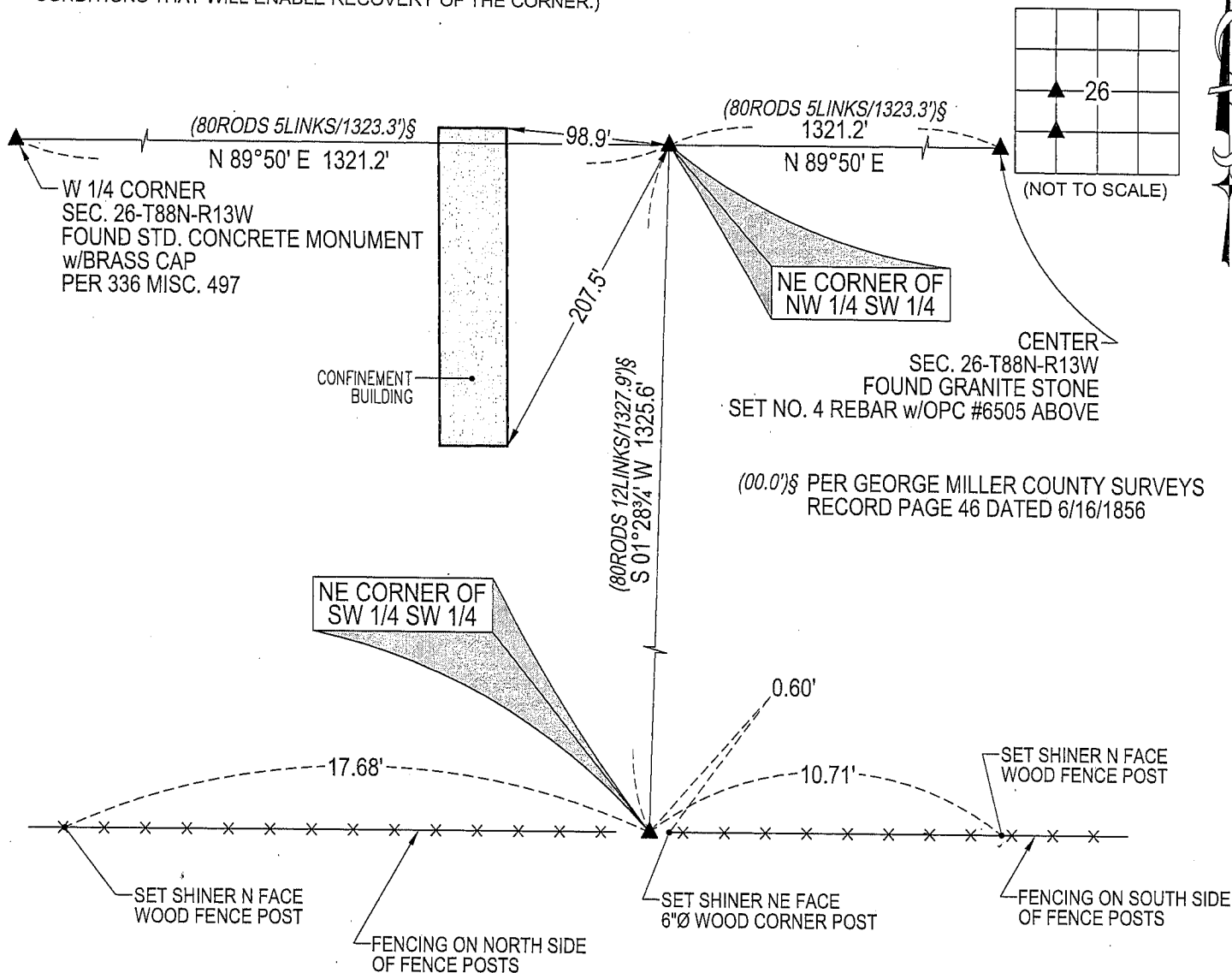
(SHOW REASON FOR PREPARING THIS CERTIFICATE, THE EVIDENCE AND DETAILED PROCEDURES USED IN ESTABLISHING THE CORNER POSITIONS AND MONUMENTATION FOUND OR PLACED.)

MONUMENT DESCRIPTION AND REMARKS:

NO USPLSCC ON FILE. SURVEY COMPLETED IN THE NW 1/4 SW 1/4 OF SEC. 26-T88N-R13W.  
NE CORNER OF NW 1/4 SW 1/4: NO BLACK HAWK COUNTY ENGINEER REFERENCE TIES AVAILABLE. GEORGE MILLER COUNTY SURVEYS RECORD PAGE 46 DATED 6/16/1856 CALLS FOR [STONE]. EXCAVATED AND PROBED A 10 SQ. FT. AREA, NO STONE FOUND, SET NO. 4 REBAR w/OPC #6505 AT THE MIDPOINT OF A LINE BETWEEN THE W 1/4 CORNER AND THE CENTER.  
NE CORNER OF SW 1/4 SW 1/4: NO BLACK HAWK COUNTY ENGINEER REFERENCE TIES AVAILABLE. GEORGE MILLER COUNTY SURVEYS RECORD PAGE 46 DATED 6/16/1856 CALLS FOR [STONE]. FOUND 14"N-Sx6"E-W(TOP VIEW) GRANITE STONE 1.5' DEEP. STONE HAS A FLAT TOP AND A FLAT WEST SIDE. SET NO. 4 REBAR w/OPC #6505 ABOVE CENTER OF STONE.

PLAN VIEW

(SHOW A MINIMUM OF THREE REFERENCE TIES TO DURABLE PHYSICAL OBJECTS, RELEVANT MONUMENTS AND PHYSICAL CONDITIONS THAT WILL ENABLE RECOVERY OF THE CORNER.)



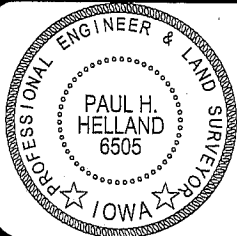
(BEARINGS ARE BASED UPON GEODETIC NORTH)



HELLAND ENGINEERING & SURVEYING, LTD.  
1107 Technology Parkway  
Cedar Falls, Iowa 50613-6951  
(319)-266-0161

SHINER = 8D NAIL & 1 15/16"Ø METAL SHINER  
OPC = PLASTIC CAP (O=ORANGE, R=RED, Y=YELLOW)

(00') RECORDED AS FILE NAME: 06-283C1.DWG



I hereby certify that this land surveying document was prepared and the related survey work was performed by me or under my direct personal supervision and that I am a duly licensed Land Surveyor under the laws of the State of Iowa.

Paul H. Helland  
License Number 6505  
My license renewal date is December 31, 2007.  
All pages or sheets are covered by this seal except:

LIST CORNERS TO BE INDEXED

CORNER	SECTION	TOWNSHIP	RANGE
NE CORNER NW 1/4 SW 1/4	26	88N	13W
NE CORNER SW 1/4 SW 1/4	26	88N	13W