



Doc ID: 011978140001 Type: GEN
Recorded: 07/19/2023 at 03:27:52 PM
Fee Amt: \$0.00 Page 1 of 1
Black Hawk County Iowa
SANDIE L. SMITH RECORDER

File 2024-00000858

*Black Hawk County Engineer

Prepared by & Return to: Isaiah M. Reicks, HRS, LLC, 2206 East Bremer Avenue, Waverly, IA 50677, Phone 319-463-5167

United States Public Land Survey Corner Certificate

Land Survey Monument situated in
Section 26, Township 88 North, Range 13 West of the Fifth Principal Meridian, Black Hawk County, Iowa.
On file in Document #2003-1652 in the County Recorder's Office.

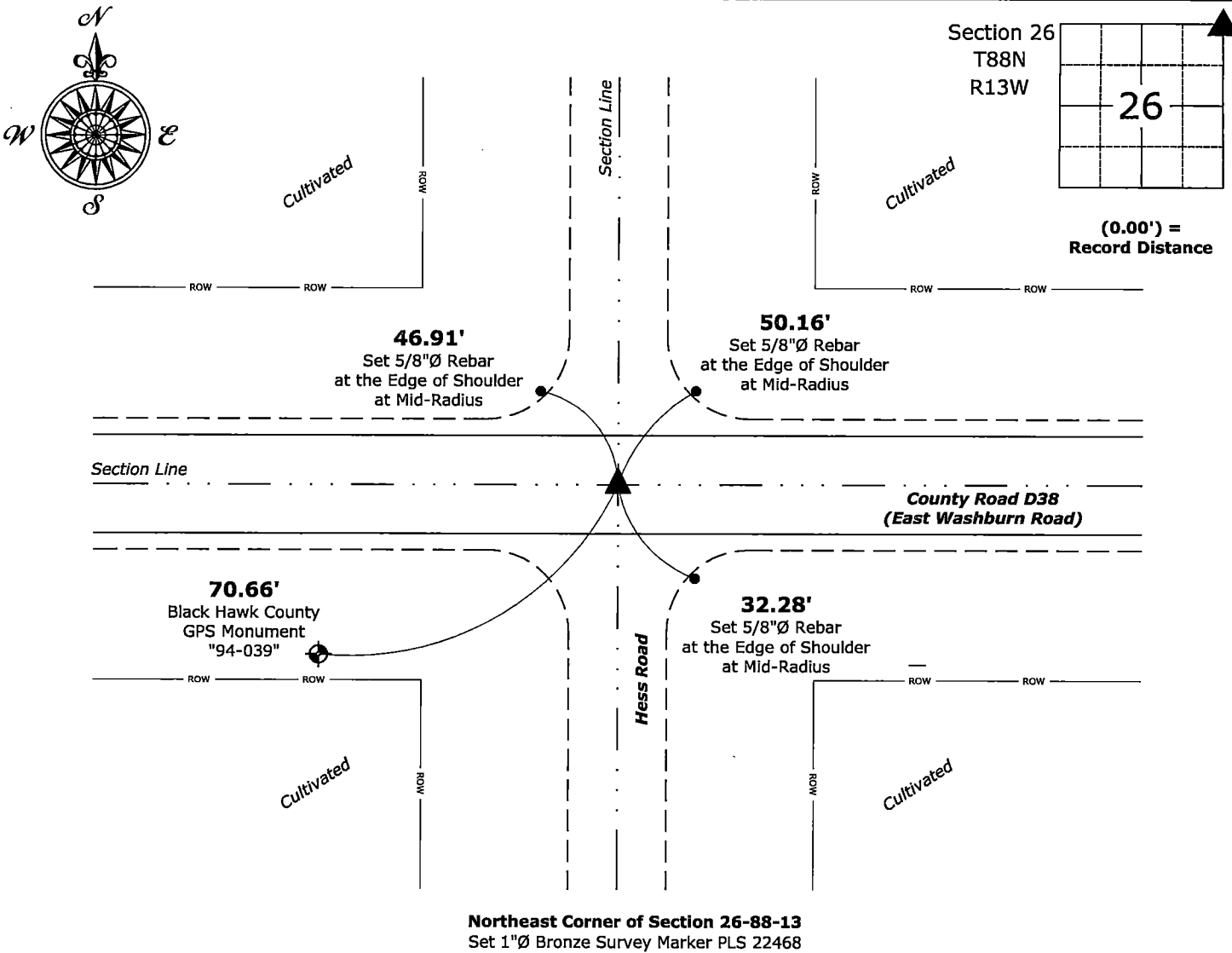
This certificate is being prepared in compliance with Iowa Code Chapter 355.11 because: {
☐ There is no certificate on file for this corner.
☐ There are no longer three valid ties of record.
☐ There are changes to reference ties of record.
☒ There is change of monumentation of record.
☐ To clarify description of record monument (ties).

Monument Description and Remarks:

Northeast Corner: Found 5/8"Ø Rebar with information obtained from the previously recorded Section Corner Certificate.
Set 1"Ø Bronze Survey Marker PLS 22468 with coordinates of the found location obtained prior to highway reconstruction.
Corner reset in conjunction with Project No. FM-C007(168)--55-07.

Plan View - Not to Scale

(Show a minimum of three reference ties to durable physical objects, relevant monuments and physical conditions that will enable recovery of the corner.)



Northeast Corner of Section 26-88-13
Set 1"Ø Bronze Survey Marker PLS 22468



I hereby certify that this land surveying document was prepared and the related survey work was performed by me or under my direct personal supervision and that I am a duly licensed Land Surveyor under the laws of the State of Iowa.
Isaiah M. Reicks 7-18-23
Isaiah M. Reicks Date:
License number 22468
My license renewal date is December 31, 2023.
Sheets covered by this seal: Individual sheet only

List Corner to be Indexed			
Corner	Section	Township	Range
NE	26	88	13
Project Number: 2023-806			
FB:Black Hawk 11, Page(s) 1-2			