

PROOF FILED FOR RECORD JUL 17, 2002, AT 4:00 P. M. FEE N/C

COMPARED *KS* *Patricia A. Hess* BLACK HAWK COUNTY RECORDER

BLACK HAWK COUNTY ENGINEERS OFFICE

PREPARED BY: BLACK HAWK COUNTY ENGINEERS OFFICE
316 E. FIFTH STREET, ROOM 211 WATERLOO, IOWA 50703PH.# (319) 833-3008
FAX.# (319) 833-3139SLSI 9-94
CERT 12-96

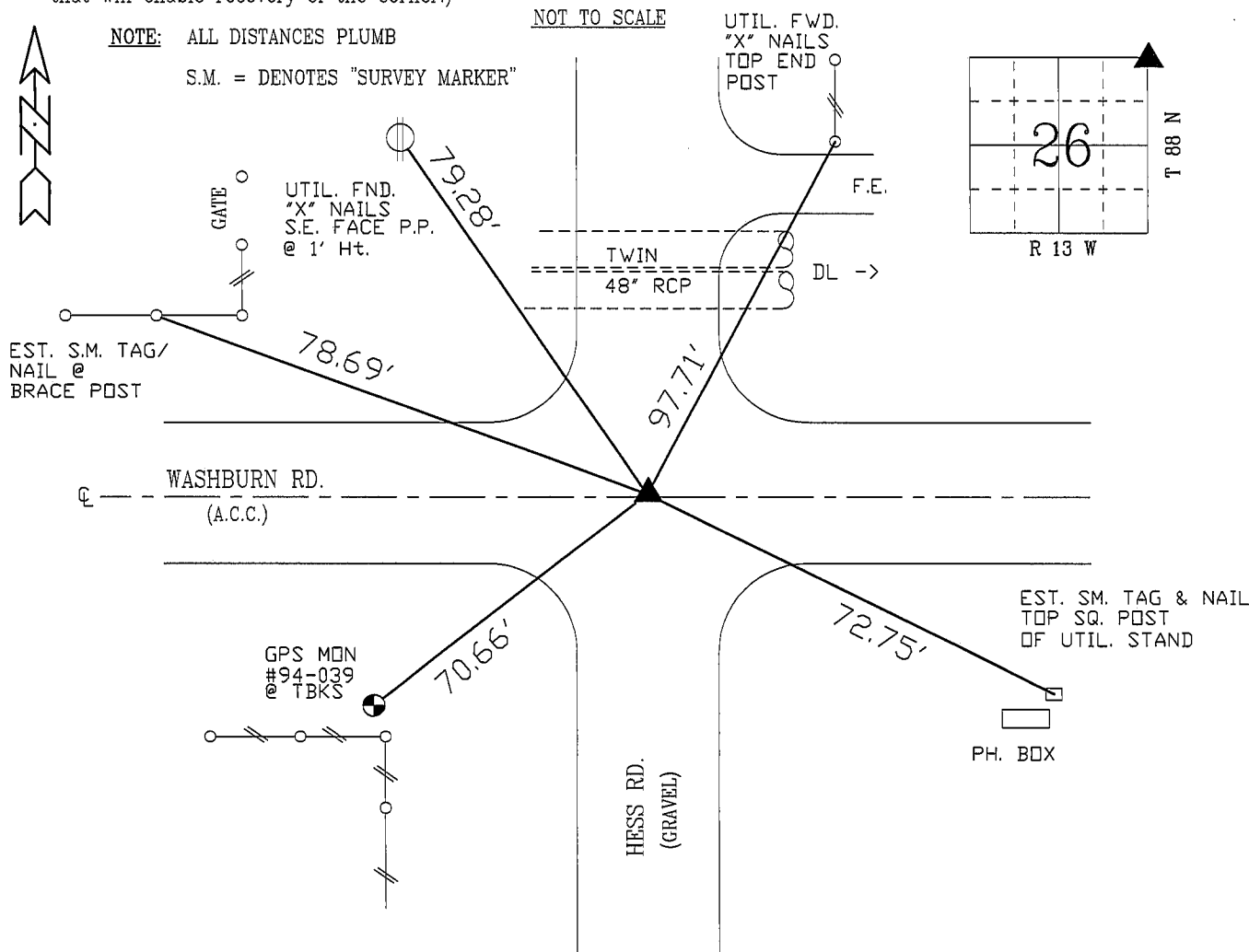
UNITED STATES PUBLIC LAND SURVEY CORNER CERTIFICATE OF
Land Survey Monuments situated in Section 26, Township 88 N,
Range 13 W, of the Fifth Principal Meridian, BLACK HAWK County, Iowa.
Previously recorded in Misc. Book N/A, Page N/A, in County Recorder's Office.

(Show reason for preparing this certificate, the evidence and detailed procedures used in establishing the corner positions and monumentation found or placed.)

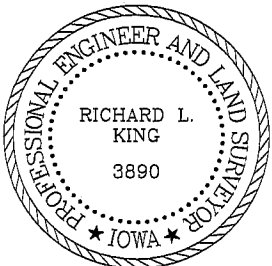
Monument Description and Remarks: NORTH 1/4 CORNER SECTION 25-88-13
FOUND P.C.C. NAIL @ 0.10' S. C.L. PCC JOINT PRIOR TO RESURFACING.
AFTER 5-1/2" ACC RE-SURF., ESTABLISHED #5 REBAR x 5"L. RECESSED
W/ SURFACE @ 0.10' SOUTH OF C.L. ACC JOINT.

PLAN - VIEW

(Show a minimum of three reference ties to durable physical objects, relevant monuments and physical conditions that will enable recovery of the corner.)

FIELD SURVEY: G.T. & C.W. MAY 2002
PREPARED BY: M.C. & G.T. 07/16/02

CERTIFICATION



I hereby certify that this land surveying document was prepared and the related survey work was performed by me or under my direct personal supervision and that I am a duly licensed Land Surveyor under the laws of the State of Iowa.

Richard L. King 7/13/02
Richard L. King (date)

License Number 3890

My license renewal date is December 31, 2003

Pages or sheets covered by this seal:

This Land Corner Certificate Only.

LIST CORNERS TO BE INDEXED

Corner	Section	Township	Range
N.E. COR.	26	88 N	13 W
N.W. COR.	25	88 N	13 W
S.E. COR.	23	88 N	13 W
S.W. COR.	24	88 N	13 W