

Number: 202300006247
Recorded: 10/17/2022 at 11:10:14.0 AM
County Recording Fee: \$7.00
Iowa E-Filing Fee: \$3.00
Combined Fee: \$10.00
Revenue Tax:
Sandie L. Smith, RECORDER
Black Hawk County, Iowa

Prepared by & Return to: Herold - Reicks Surveying, 2206 East Bremer Avenue, Waverly, IA 50677, Ph. 319-483-5187

United States Public Land Survey Corner Certificate

Land Survey Monument situated in
Section 26, Township 88 North, Range 13 West of the Fifth Principal Meridian, **Black Hawk** County, Iowa.
On file in **Document #2007-10988** in the County Recorder's Office.

This certificate is being prepared in compliance with Iowa Code Chapter 355.11 because:



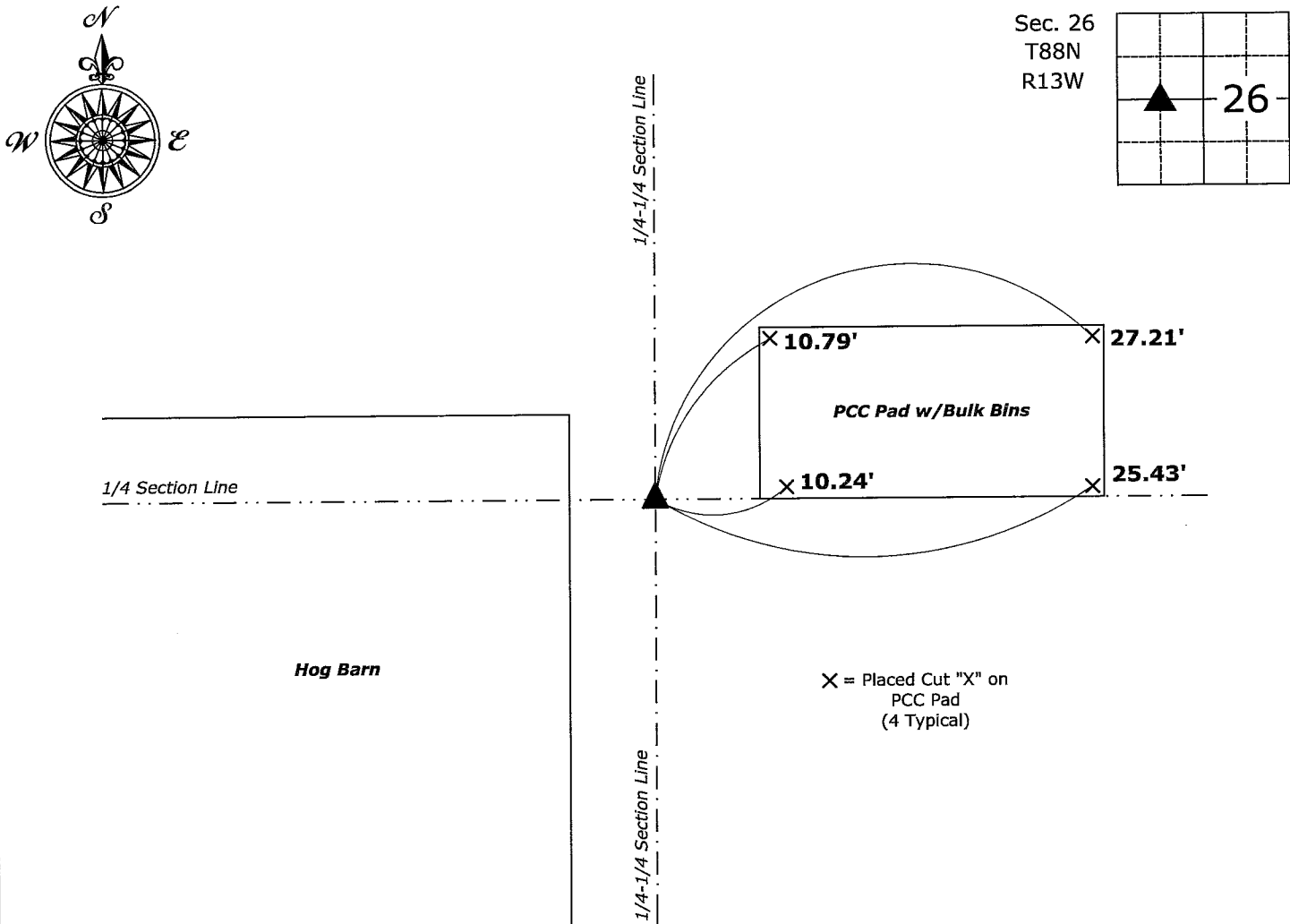
- ☐ There is no certificate on file for this corner.
- ☒ There are no longer three valid ties of record.
- ☐ There are changes to reference ties of record.
- ☒ There is change of monumentation of record.
- ☐ To clarify description of record monument (ties).

Monument Description and Remarks:

Northeast Corner of the NW 1/4 - SW 1/4: Set 5/8"Ø Rebar w/2"Ø Aluminum Cap PLS 22468 equidistant and on line between the West 1/4 Corner and the Center of said Section. Previous monument was removed from building construction.

Plan View

(Show a minimum of three reference ties to durable physical objects, relevant monuments and physical conditions that will enable recovery of the corner.)



Northeast Corner of the NW 1/4 - SW 1/4 of Section 26-88-13
Set 5/8"Ø Rebar w/2"Ø Aluminum Cap PLS 22468



I hereby certify that this land surveying document was prepared and the related survey work was performed by me or under my direct personal supervision and that I am a duly licensed Land Surveyor under the laws of the State of Iowa.
Isaiah M. Reicks 10-14-22
Isaiah M. Reicks Date:
License number 22468
My license renewal date is December 31, 2023.
Sheets covered by this seal: Individual sheet only

List Corner to be Indexed			
Corner	Section	Twp.	Range
NE-NW-SW	26	88	13
Project Number: 2022-569			
FB: Black Hawk 10, Pgs. 77-78			