



Doc ID: 005634370001 Type: GEN
Recorded: 12/05/2014 at 12:02:40 PM
Fee Amt: \$7.00 Page 1 of 1
Black Hawk County Iowa
JUDITH A MCCARTHY RECORDER
File 2015-00009467

Prepared by & Return to: Herold - Reicks Surveying, 10 East Main Street, New Hampton, IA 50659, Ph. 641-394-2725

UNITED STATES PUBLIC LAND SURVEY CORNER CERTIFICATE

Land Survey Monuments situated in Section 25, Township 88 North, Range 13 West of the Fifth Principal Meridian, Black Hawk County, Iowa. 1 & 2.) Previously recorded in Doc. #2005-19155 in the County Recorder's office.

This certificate is being prepared in compliance with Iowa Code Chapter 355.11 because:

- 1 & 2

1 & 2
- ☐ There is no certificate on file for this corner.

☐ There are no longer three valid ties of record.

☒ There are changes to reference ties of record.

☒ There is change of monumentation of record.

☐ To clarify description of record monument (ties).

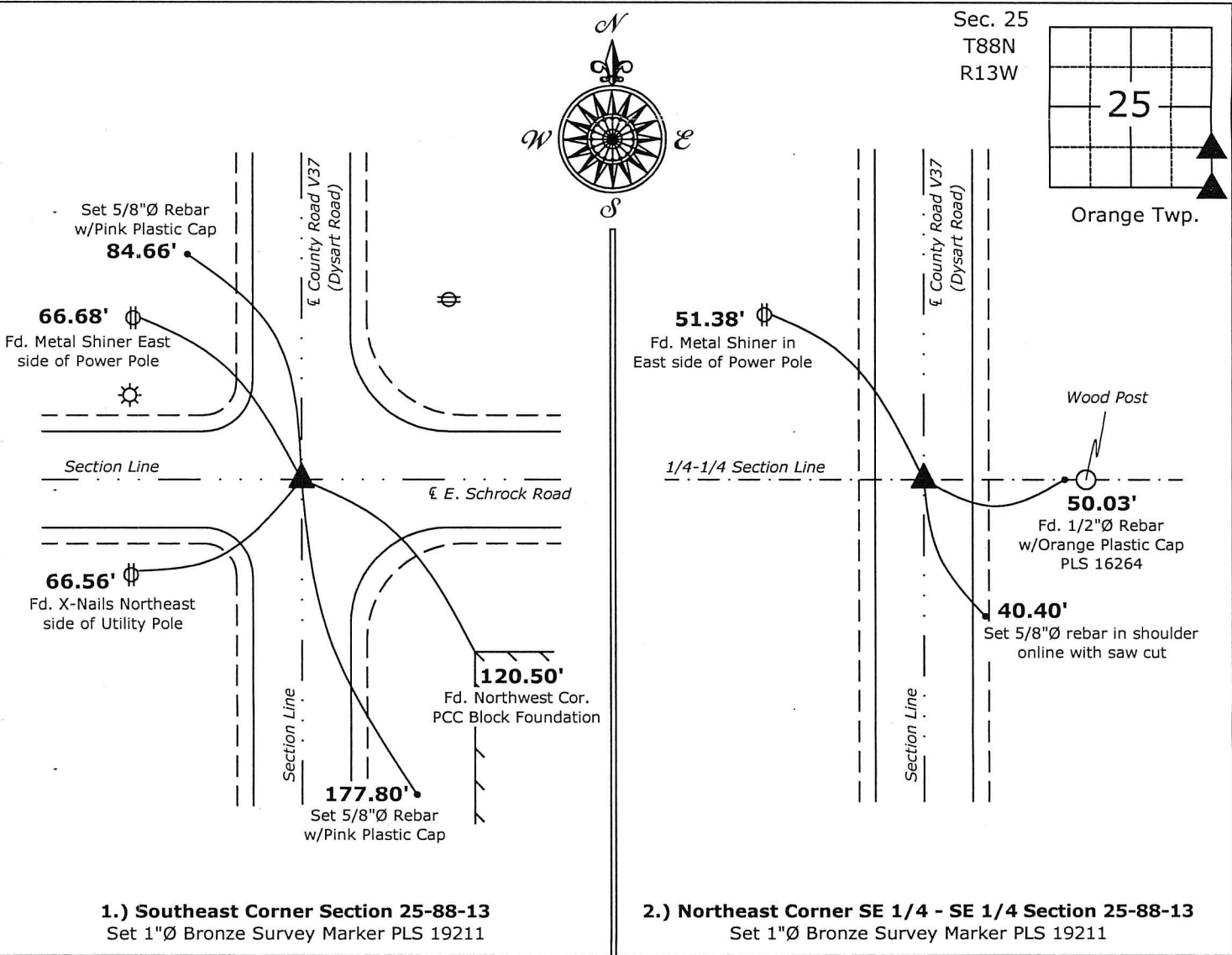
Monument Description and Remarks:

1.) Southeast Corner: Set 1"Ø Bronze Survey Marker PLS 19211 at previous location (Found 5/8"Ø Rebar) by means of coordinates obtained prior to highway reconstruction, Project No. FM-TSF-C007(130)--5B-07.

2.) Northeast Corner SE 1/4 - SE 1/4: Set 1"Ø Bronze Survey Marker PLS 19211 at previous location (Found Mag Nail) by means of coordinates obtained prior to highway reconstruction, Project No. FM-TSF-C007(130)--5B-07.

PLAN - VIEW

(Show a minimum of three reference ties to durable physical objects, relevant monuments and physical conditions that will enable recovery of the corner.)



I hereby certify that this land surveying document was prepared and the related survey work was performed by me or under my direct personal supervision and that I am a duly licensed Land Surveyor under the laws of the State of Iowa.
Kirk D. Reicks 12-4-14
Kirk D. Reicks Date:
License number 19211
My license renewal date is December 31, 2014.
Sheets covered by this seal: Individual sheet only

| List Corners to be Indexed | | | |
|---------------------------------|---------|------|-------|
| Corners | Section | Twp. | Range |
| SE | 25 | 88 | 13 |
| NE-SE-SE | 25 | 88 | 13 |
| Project Number: 2014-135 | | | |
| FB: Black Hawk County 1, Pg. 17 | | | |