

Reserved for County Recorder's use.

Doc ID: 009966020001 Type: GEN
Recorded: 10/08/2020 at 01:54:34 PM
Fee Amt: \$7.00 Page 1 of 1
Black Hawk County Iowa
SANDIE L. SMITH RECORDER
File **2021-00007510**

Kyle J. Helland, 6109 Chancellor Drive, Cedar Falls, Iowa 50613-6916, (319)-266-0161

UNITED STATES PUBLIC LAND SURVEY CORNER CERTIFICATE
OF

LAND SURVEY MONUMENTS SITUATED IN SECTION NO. 25, TOWNSHIP NO. 88 NORTH, RANGE
NO. 13 WEST OF THE FIFTH PRINCIPAL MERIDIAN, BLACK HAWK COUNTY, IOWA.
PREVIOUSLY RECORDED IN N/A.

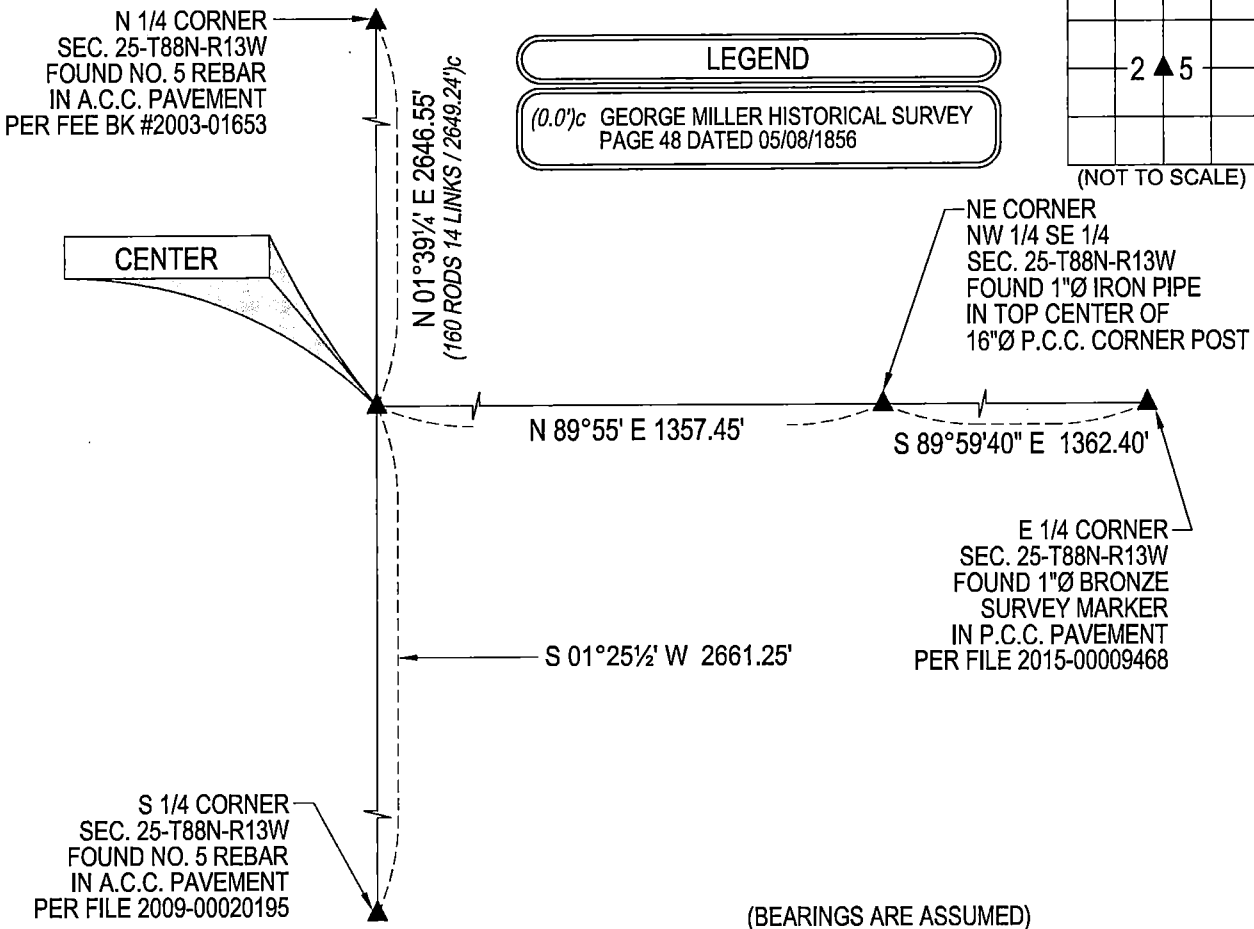
(SHOW REASON FOR PREPARING THIS CERTIFICATE, THE EVIDENCE AND DETAILED PROCEDURES USED IN ESTABLISHING THE
CORNER POSITIONS AND MONUMENTATION FOUND OR PLACED.)

MONUMENT DESCRIPTION AND REMARKS:
NO USPLSCC ON FILE. SURVEY COMPLETED IN THE SE 1/4 OF SEC. 25-T88N-R13W.

CENTER: NO BLACK HAWK COUNTY ENGINEER TIES ARE AVAILABLE. GEORGE MILLER HISTORICAL SURVEY PAGE 48
DATED 05/08/1856 SHOWS DISTANCE TO CORNER FROM N 1/4 CORNER BUT DOES NOT INDICATE WHAT WAS FOUND OR
SET. PLAT OF SURVEY #2011-00020502 DATED 04/20/2011 CALLS FOR [SET NO. 4 REBAR W/YELLOW ID CAP "IOWA-9961".
SEARCHED CALCULATED POSITION PER SAID PLAT BUT NOTHING FOUND. LOCATION FALLS IN CULTIVATED FIELD.
SAID PLAT SHOWS NO EVIDENCE OF HOW IT'S POSITION WAS CALCULATED. FOUND 6"x6" SQUARE P.C.C. CORNER
POST. PROBED AROUND SAID CORNER POST AND CONCLUDED IT HAS A LARGE PCC BASE. CORNER POST APPEARS
TO HAVE BEEN IN PLACE FOR NUMBER OF YEARS AND HISTORICAL AERIAL PHOTOS SHOW FENCING RUNNING IN ALL
DIRECTIONS SINCE THE 1930'S. ADJOINERS APPEAR TO BE OCCUPYING UP TO SAID CORNER POST. THEREFORE,
UTILIZED CENTERLINE AT BASE OF SAID CORNER POST AS CORNER. NO OTHER DURABLE, GERMANE PHYSICAL
OBJECTS TO REFERENCE TO. FENCING RUNNING NORTH, EAST, AND WEST ARE IN POOR CONDITION. CORNER POST
IS LEANING 10° WESTERLY.

PLAN VIEW

(SHOW A MINIMUM OF THREE REFERENCE TIES TO DURABLE PHYSICAL OBJECTS, RELEVANT MONUMENTS AND PHYSICAL
CONDITIONS THAT WILL ENABLE RECOVERY OF THE CORNER.)



HELLAND ENGINEERING & SURVEYING, LTD.
6109 Chancellor Drive
Cedar Falls, Iowa 50613-6916
(319)-266-0161

BRASS TAG = 4d. NAIL & 13/16"Ø BRASS TAG DRAWN BY: KDA
SHINER = 1"Ø STEEL SHINER w/MASONRY NAIL
OPC = PLASTIC CAP (O=ORANGE, R=RED, Y=YELLOW)
(00') RECORDED AS FILE NAME: 20-194-29.DWG



I hereby certify that this land surveying document was prepared
and the related survey work was performed by me or under my
direct personal supervision and that I am a duly licensed
Professional Land Surveyor under the laws of the State of Iowa.
Kyle J. Helland 10/10/2020
Kyle J. Helland
License Number 23212
My license renewal date is December 31, 2021.
All pages or sheets are covered by this seal except:

LIST CORNERS TO BE INDEXED			
CORNER	SECTION	TOWNSHIP	RANGE
CENTER	25	88N	13W

File Number: 2021-00007510 Seq: 1