

SC ✓ BLACK HAWK COUNTY IOWA:SS  
 MISC ✓ Filed for record Sept 15, 1999 at 4:00 P.M.  
 INDEX ✓ and recorded in Book 335 of MISC  
 MARGIN ✓ Page 740  
 PROOF ✓  
 COMPARE ✓ *Christina J. Lass* RECORDER  
 Fee N/G.  
 ENGINEER'S OFFICE

PREPARED BY: BLACK HAWK COUNTY ENGINEERS OFFICE  
 316 E. FIFTH STREET, ROOM 211 WATERLOO, IOWA 50703

PH# (319) 833-3008  
 FAX# (319) 833-3139  
 SLSI 9-94  
 CERT 12-96

UNITED STATES PUBLIC LAND SURVEY CORNER CERTIFICATE OF  
 Land Survey Monuments situated in Section 24, Township 88 N,  
 Range 13 W, of the Fifth Principal Meridian, BLACK HAWK County, Iowa.  
 Previously recorded in Misc. Book 296, Page 46, in County Recorder's Office.

(Show reason for preparing this certificate, the evidence and detailed procedures used in establishing the corner positions and monumentation found or placed.)

Monument Description and Remarks: FND 3/4" x 6" L SMOOTH PIN BEFORE  
RESURFACING. 5 1/2" ACC RE-SURF. PER PLANS. LOCATION RECEIVED PCC  
PATCH UNDER NEW ACC SURFACE WITH NO ADDITIONAL MONUMENTATION  
FOUND. EST. 5/8" x 6" L RBR. FLUSH W/ACC SURFACE +/- 1/2" JOINT OF  
ACC PAVEMENT.

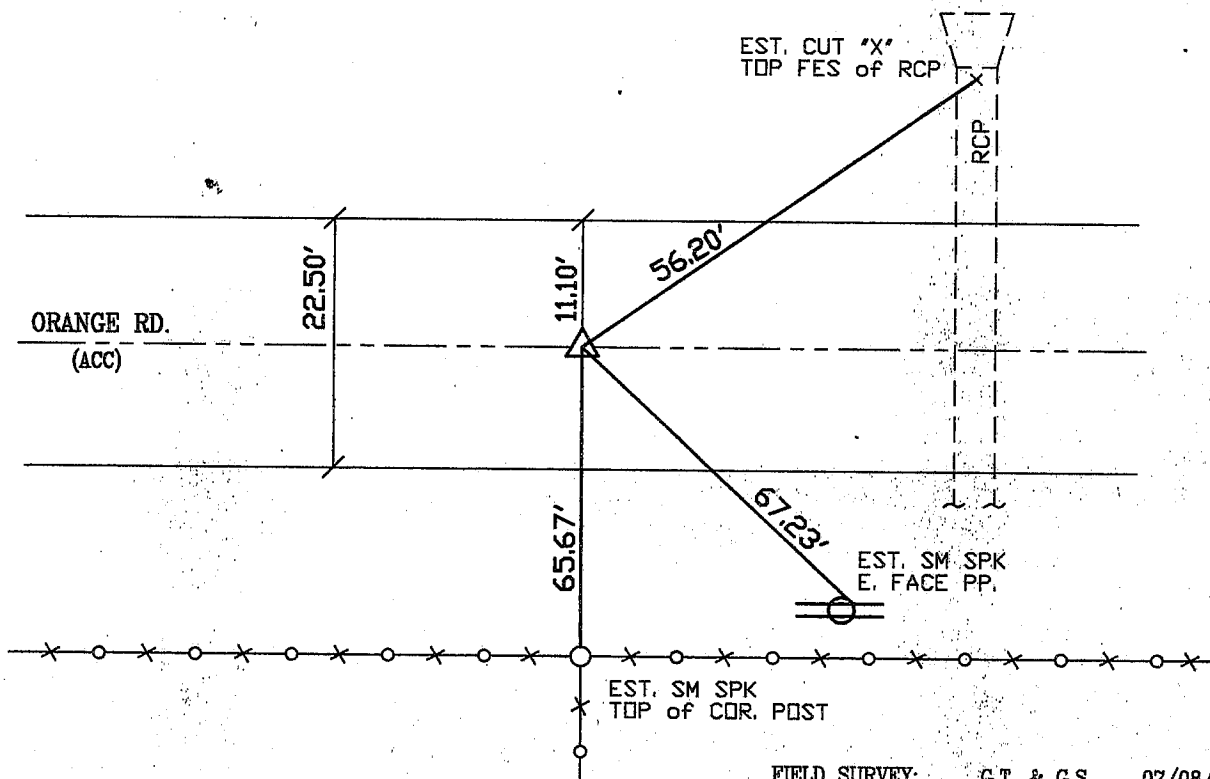
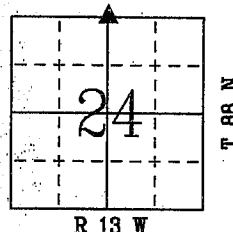
### PLAN - VIEW

(Show a minimum of three reference ties to durable physical objects, relevant monuments and physical conditions that will enable recovery of the corner.)

NOTE: ALL DISTANCES PLUMB

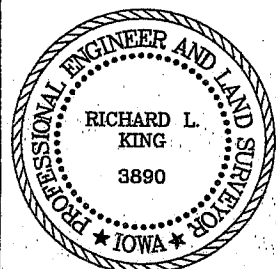
"SM" DENOTES "SURVEY MARKER"

NOT TO SCALE



FIELD SURVEY: G.T. & G.S. 07/08/99  
 PREPARED BY: G.S. 07/12/99

### CERTIFICATION



I hereby certify that this land surveying document was prepared and the related survey work was performed by me or under my direct personal supervision and that I am a duly licensed Land Surveyor under the laws of the State of Iowa.

*Richard L. King* 9/7/99  
 Richard L. King (date)

License Number 3890

My license renewal date is December 31, 1999

Pages or sheets covered by this seal:

This Land Corner Certificate Only.

### LIST CORNERS TO BE INDEXED

Corner	Section	Township	Range
N. 1/4	24	88 N	13 W

BOOK 335 PAGE 740