

Michael R. Fagle, P.L.S.

AECOM, 501 Sycamore St., Suite 222, Waterloo, Iowa 50703

1-319-232-6531

UNITED STATES PUBLIC LAND SURVEY CORNER CERTIFICATE
OF

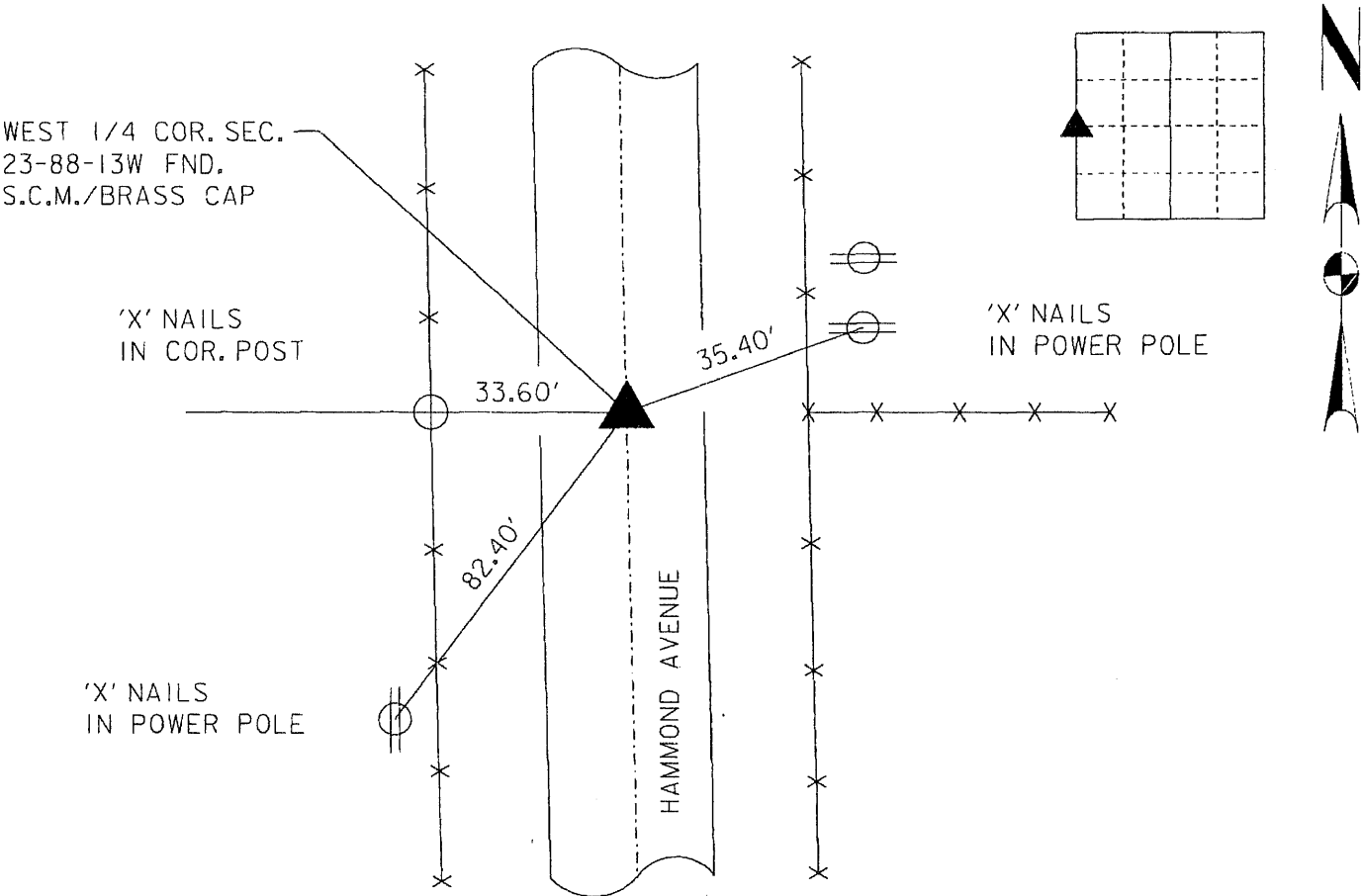
Land Survey Monuments situated in Section 23, Township 88 North,
Range 13 West, of the Fifth Principal Meridian, BLACK HAWK
County, Iowa. Previously recorded in _____
(Book, Page, Document Number, etc.)

(Show reason for preparing this certificate, the evidence and detailed procedures
used in establishing the corner positions and monumentation found or placed.)

Monument Description and Remarks: FND. S.C.M./BRASS CAP IN CENTER OF HAMMOND
AVENUE, 7" BELOW ROADWAY SURFACE

PLAN - VIEW

(Show a minimum of three reference ties to durable physical objects, relevant
monuments and physical conditions that will enable recovery of the corner.)



	List Corners to be Indexed			
	Corners	Section	Twp	Range
I hereby certify that this Land Surveying document was prepared by me or under my direct personal supervision and that I am a duly Licensed Land Surveyor under the laws of the State of Iowa. <u>Michael R. Fagle</u> <u>8-16-10</u> MICHAEL R. FAGLE Date License number 8505 My license renewal date is December 31, 2010 Pages or sheets covered by this seal: <u>THIS SHEET</u>	WEST 1/4 CORNER 23 T 88 N R 13 W			