

Doc ID: 004234060001 Type: GEN
Kind: CORNER
Recorded: 08/24/2010 at 11:55:02 AM
Fee Amt: \$9.00 Page 1 of 1
Black Hawk County Iowa
JUDITH A MCCARTHY RECORDER
File **2011-00003527**

Michael R. Fagle, P.L.S.

AECOM, 501 Sycamore St., Suite 222, Waterloo, Iowa 50703

I-319-232-6531

UNITED STATES PUBLIC LAND SURVEY CORNER CERTIFICATE
OF

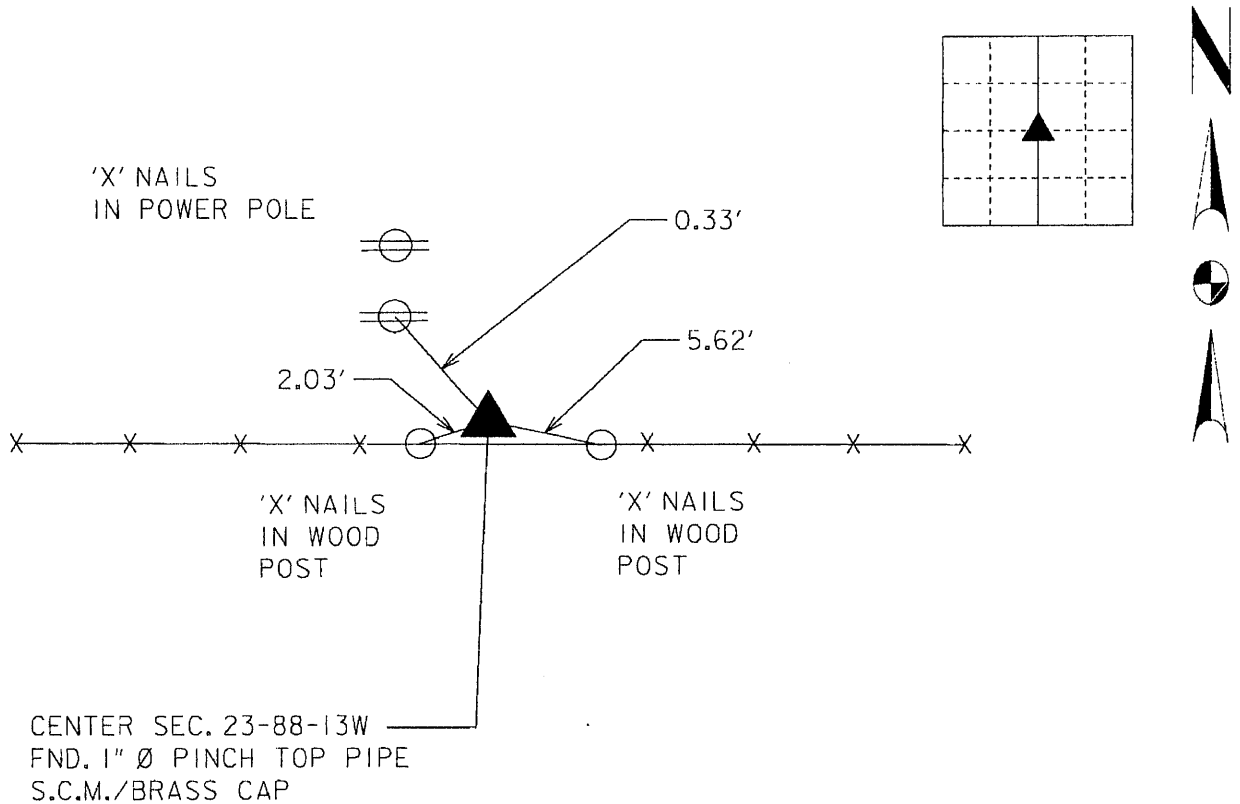
Land Survey Monuments situated in Section 23, Township 88 North,
Range 13 West, of the Fifth Principal Meridian, BLACK HAWK
County, Iowa. Previously recorded in _____
in County Recorder's Office. (Book, Page, Document Number, etc.)

(Show reason for preparing this certificate, the evidence and detailed procedures used in establishing the corner positions and monumentation found or placed.)

Monument Description and Remarks: FND. 1" Ø PINCH TOP PIPE FROM PREVIOUS SURVEYS
AVENUE, 7" BELOW ROADWAY SURFACE

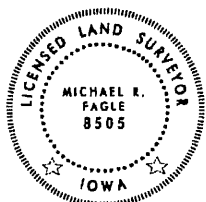
PLAN - VIEW

(Show a minimum of three reference ties to durable physical objects, relevant monuments and physical conditions that will enable recovery of the corner.)



List Corners to be Indexed

Corners	Section	Twp	Range
CENTER	23	T 88 N	R 13 W



I hereby certify that this Land Surveying document was prepared by me or under my direct personal supervision and that I am a duly Licensed Land Surveyor under the laws of the State of Iowa.

Michael R. Fagle
MICHAEL R. FAGLE

8-16-10
Date

License number 8505

My license renewal date is December 31, 2010

Pages or sheets covered by this seal:

THIS SHEET