

SC ✓
MISC ✓
INDEXED ✓
MARGIN
PROOF
COMPARED

BLACK HAWK COUNTY IOWA:SS
Filed for record Sept 15, 1999 at 4:00 P.M.
and recorded in Book 335 of MISC
Page 735
RECORDED
Fee N/G.
ENGINEER'S OFFICE

6449

RECEIVED - BLACK HAWK CO. ASSESSOR

PREPARED BY: BLACK HAWK COUNTY ENGINEERS OFFICE
316 E. FIFTH STREET, ROOM 211 WATERLOO, IOWA 50703

PH# (319) 833-3008
FAX# (319) 833-3139
SLIST 9-94
CERT 12-98

UNITED STATES PUBLIC LAND SURVEY CORNER CERTIFICATE OF
Land Survey Monuments situated in Section 22, Township 88 N,
Range 13 W, of the Fifth Principal Meridian, BLACK HAWK County, Iowa.
Previously recorded in Misc. Book 299, Page 744, in County Recorder's Office.

(Show reason for preparing this certificate, the evidence and detailed procedures used in establishing the corner positions and monumentation found or placed.)

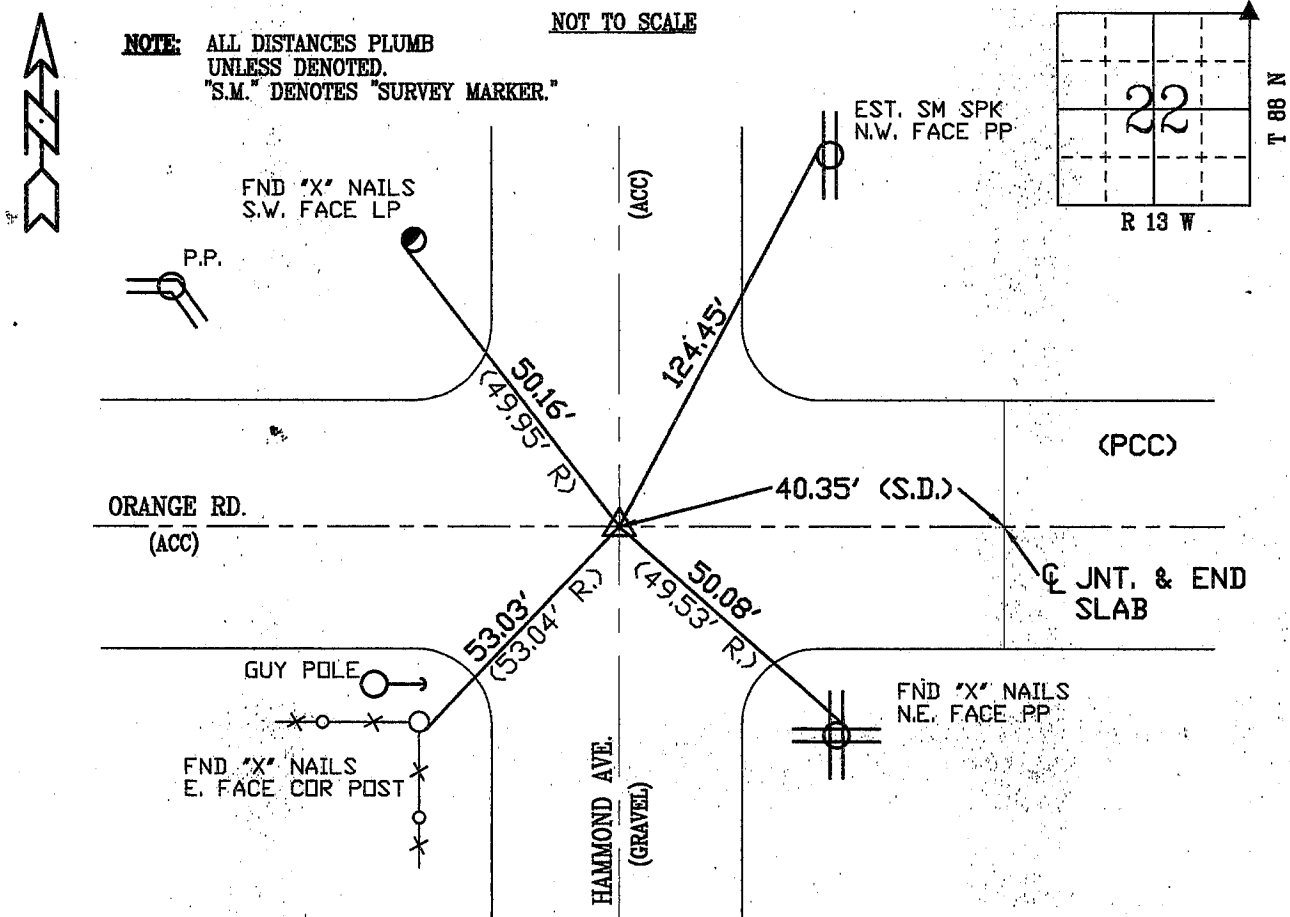
Monument Description and Remarks: UTIL. FND. 60d SPK. @ C
INTERSECTIONS RECORD TIE DENOTE 1/2" IRON PIN IN JAN '92'. RECORD
TIES IN (), AS SHOWN. EST. 5/8" x 6" L RBR. AFTER ACC RESURFACING.

PLAN - VIEW

(Show a minimum of three reference ties to durable physical objects, relevant monuments and physical conditions that will enable recovery of the corner.)

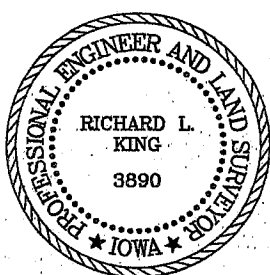
NOTE: ALL DISTANCES PLUMB
UNLESS DENOTED.
"S.M." DENOTES "SURVEY MARKER."

NOT TO SCALE



FIELD SURVEY: G.T. & G.S. 07/08/99
PREPARED BY: G.S. 08/19/99

CERTIFICATION



I hereby certify that this land surveying document was prepared and the related survey work was performed by me or under my direct personal supervision and that I am a duly licensed Land Surveyor under the laws of the State of Iowa.

Richard L. King
License Number 3890

My license renewal date is December 31, 1999

Pages or sheets covered by this seal:

This Land Corner Certificate Only.

LIST CORNERS TO BE INDEXED

Corner Section - Township - Range

N.E. 22 88 N 13 W

BOOK 335 PAGE 735