



Doc ID: 007599110002 Type: GEN  
Recorded: 04/12/2017 at 02:05:29 PM  
Fee Amt: \$12.00 Page 1 of 2  
Black Hawk County Iowa  
SANDIE L. SMITH RECORDER

File 2017-00017827

Reserved for County Recorder's use.

Kyle J. Helland, 1107 Technology Parkway, Cedar Falls, Iowa 50613-6951, (319)-266-0161

UNITED STATES PUBLIC LAND SURVEY CORNER CERTIFICATE  
OF

LAND SURVEY MONUMENTS SITUATED IN SECTION NO. 22, TOWNSHIP NO. 88 NORTH, RANGE  
NO. 13 WEST OF THE FIFTH PRINCIPAL MERIDIAN, BLACK HAWK COUNTY, IOWA.  
PREVIOUSLY RECORDED IN N/A

(SHOW REASON FOR PREPARING THIS CERTIFICATE, THE EVIDENCE AND DETAILED PROCEDURES USED IN ESTABLISHING THE  
CORNER POSITIONS AND MONUMENTATION FOUND OR PLACED.)

MONUMENT DESCRIPTION AND REMARKS:

NO USPLSCC ON FILE. SURVEY COMPLETED IN THE NE 1/4 OF SEC. 22-T88N-R13W.

→ NE CORNER OF SE 1/4 NE 1/4: NO BLACK HAWK COUNTY ENGINEER REFERENCE TIES AVAILABLE.

HAWKEYE HEIGHTS SUBDIVISION, DATED 06/20/1990, INDICATES A CORNER BEING SET AT A  
THEORETICAL MIDPOINT BETWEEN THE NE CORNER AND THE E CORNER, EXISTING 1/4 FENCE LINE IS  
SHOWN TO BE 6.68' SOUTH OF THE ROW CORNER AT THE THEORETICAL MIDPOINT. AERIAL PHOTOS  
DATING BACK TO THE 1930'S SHOW THE FENCE LINE IN PLACE. FOUND A 1"Ø PINCH PIPE, PER HAWKEYE  
HEIGHTS SUBDIVISION, AT MIDPOINT BETWEEN THE NE CORNER AND THE E 1/4 CORNER AND A 1"Ø PINCH  
PIPE AT ROW CORNER CORRESPONDING TO SAID SUBDIVISION. HOWEVER, IN CONTRADICTING  
EVIDENCE OF THE SAID PINCH PIPES, PRIOR TO THIS CORNER BEING SET, COUNTY ENGINEER'S FIELD  
BOOK 139 PAGE 14, DATED 1934, ESTABLISHES THE CORNER A DISTANCE OF 1327.7' SOUTH FROM THE  
NE 1/4 BUT DOES NOT INDICATE WHAT WAS FOUND OR SET. FURTHERMORE, COUNTY ENGINEER'S WPA  
NOTES, DATED 10/24/1941, SHOWS "3/4" FENCE LINES RUNNING EAST AND WEST AND WERE NOT AT  
MIDPOINT BUT 1328.5' SOUTH OF THE NE CORNER AND 1315.3' NORTH OF THE E CORNER.

IN ADDITION, THE POSSESSION LINE FENCING SURROUNDING 6216 HAMMOND AVENUE (NORTHWEST OF  
THIS CORNER), MATCH THE LEGAL DESCRIPTION OF "6216" IF THE WPA NORTHERLY POSITION OF THE  
1/4 CORNER IS HELD. WITH THE EXCEPTION OF THE FENCE LINE DIRECTLY SOUTH OF "6216" WHICH IS  
NOW REMOVED.

EXCAVATED AT SAID APPROXIMATE LOCATION OF SAID WPA NOTES & SAID FIELD BOOK 2'Ø HOLE TO A  
DEPTH OF 2 FEET AND PROBED TO A DEPTH OF 5 FEET IN ALL DIRECTIONS, NOTHING FOUND. BASED ON  
THE STATED CONTRADICTING EVIDENCE, THE EXISTING 1/4 FENCE LINES AND THE POSSESSION FENCE  
LINE AROUND "6216" WERE IN PLACE PRIOR TO THE HAWKEYE HEIGHTS SUBDIVISION. THEREFORE,  
HOLDING THE 6.68' SOUTH OF THE ROW PINCH PIPE AND EXTENDING A LINE FROM THE SW CORNER OF  
THE S 1/2 NE 1/4 (A FOUND GRANITE STONE) THRU SAID HELD POINT TO INTERSECTION OF THE LINE  
BETWEEN THE NE CORNER AND THE E 1/4 CORNER AND SET 1/2" REBAR w/LICENSE #23212. SAID LOCATION  
BASED ON THE SAID WPA DISTANCES MATCHES WITHIN REASON OF FIELD MEASUREMENTS.



HELLAND ENGINEERING & SURVEYING, LTD.  
1107 Technology Parkway  
Cedar Falls, Iowa 50613-6951  
(319)-266-0161

SHEET 1 OF 2

SHINER = 8d. NAIL & 1 5/16"Ø METAL SHINER DRAWN BY: SMN  
BRASS TAG = 8d. NAIL & 13/16"Ø BRASS TAG  
OPC = PLASTIC CAP (O=ORANGE, R=RED, Y=YELLOW)  
(00) RECORDED AS FILE NAME: 17-122-32.DWG



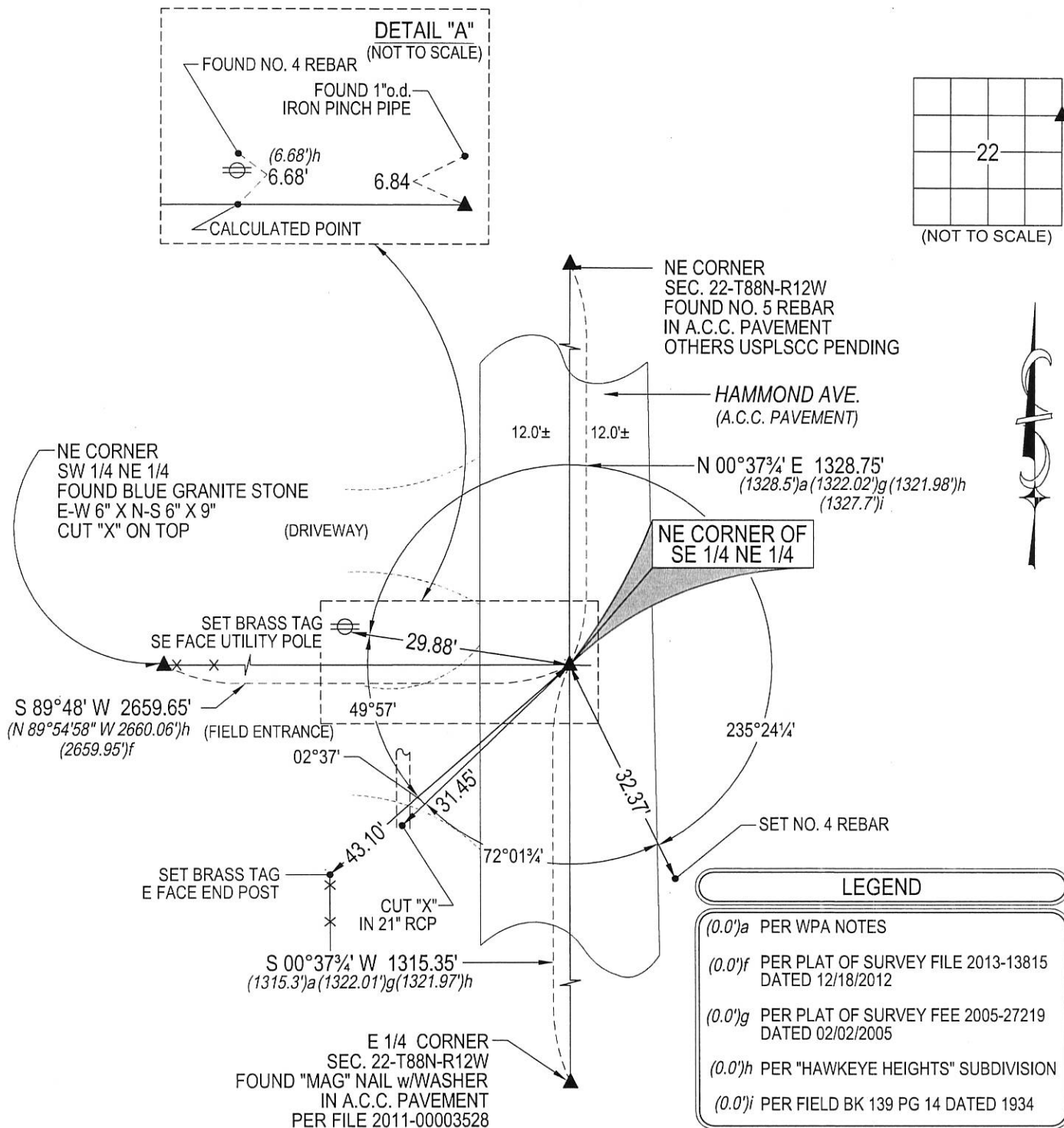
I hereby certify that this land surveying document was prepared  
and the related survey work was performed by me or under my  
direct personal supervision and that I am a duly licensed  
Professional Land Surveyor under the laws of the State of Iowa.  
Kyle J. Helland  
License Number 23212  
My license renewal date is December 31, 2017.  
All pages or sheets are covered by this seal except:

LIST CORNERS TO BE INDEXED

CORNER	SECTION	TOWNSHIP	RANGE
NE COR. SE 1/4 NE 1/4	22	88N	13W
SE COR. NE 1/4 NE 1/4	22	88N	13W
SW COR. NW 1/4 NW 1/4	23	88N	13W
NW COR. SW 1/4 NW 1/4	23	88N	13W

PLAN VIEW

(SHOW A MINIMUM OF THREE REFERENCE TIES TO DURABLE PHYSICAL OBJECTS, RELEVANT MONUMENTS AND PHYSICAL CONDITIONS THAT WILL ENABLE RECOVERY OF THE CORNER.)



(BEARINGS ARE ASSUMED)



HELLAND ENGINEERING & SURVEYING, LTD.  
1107 Technology Parkway  
Cedar Falls, Iowa 50613-6951  
(319)-266-0161

SHEET 2 OF 2

SHINER = 8d. NAIL & 1 5/16"Ø METAL SHINER  
BRASS TAG = 8d. NAIL & 13/16"Ø BRASS TAG  
OPC = PLASTIC CAP (O=ORANGE, R=RED, Y=YELLOW)  
(00') RECORDED AS  
DRAWN BY: SMN  
FILE NAME: 17-122-32.DWG

LIST CORNERS TO BE INDEXED

CORNER	SECTION	TOWNSHIP	RANGE
NE COR. SE ¼ NE ¼	22	88N	13W
SE COR. NE ¼ NE ¼	22	88N	13W
SW COR. NW ¼ NW ¼	23	88N	13W
NW COR. SW ¼ NW ¼	23	88N	13W