

Index Legend

County:	Black Hawk
Section(s):	22 Township: 88 N Range: 13 W
Corner(s):	North 1/4 Corner
Requestor:	City of Waterloo
Proprietor:	City of Waterloo
Surveyor:	William W Castle
Surveyor Company:	City of Waterloo Engineering Department 715 Mulberry Street, Waterloo, IA 50703
Return To:	715 Mulberry St, Waterloo, IA 50703 291-4312

2025-06440

RECORDED: 05/12/2025 02:40:51 PM
 RECORDING FEE: \$7.00
 REVENUE TAX: \$
 COMBINED FEE: \$7.00
SANDIE L. SMITH, RECORDER
BLACK HAWK COUNTY, IOWA

United States Public Land Survey Corner Certificate

Land Survey Monument situated in Section 22, Township 88 North, Range 13 West, of the Fifth Principal Meridian, Black Hawk County, Iowa

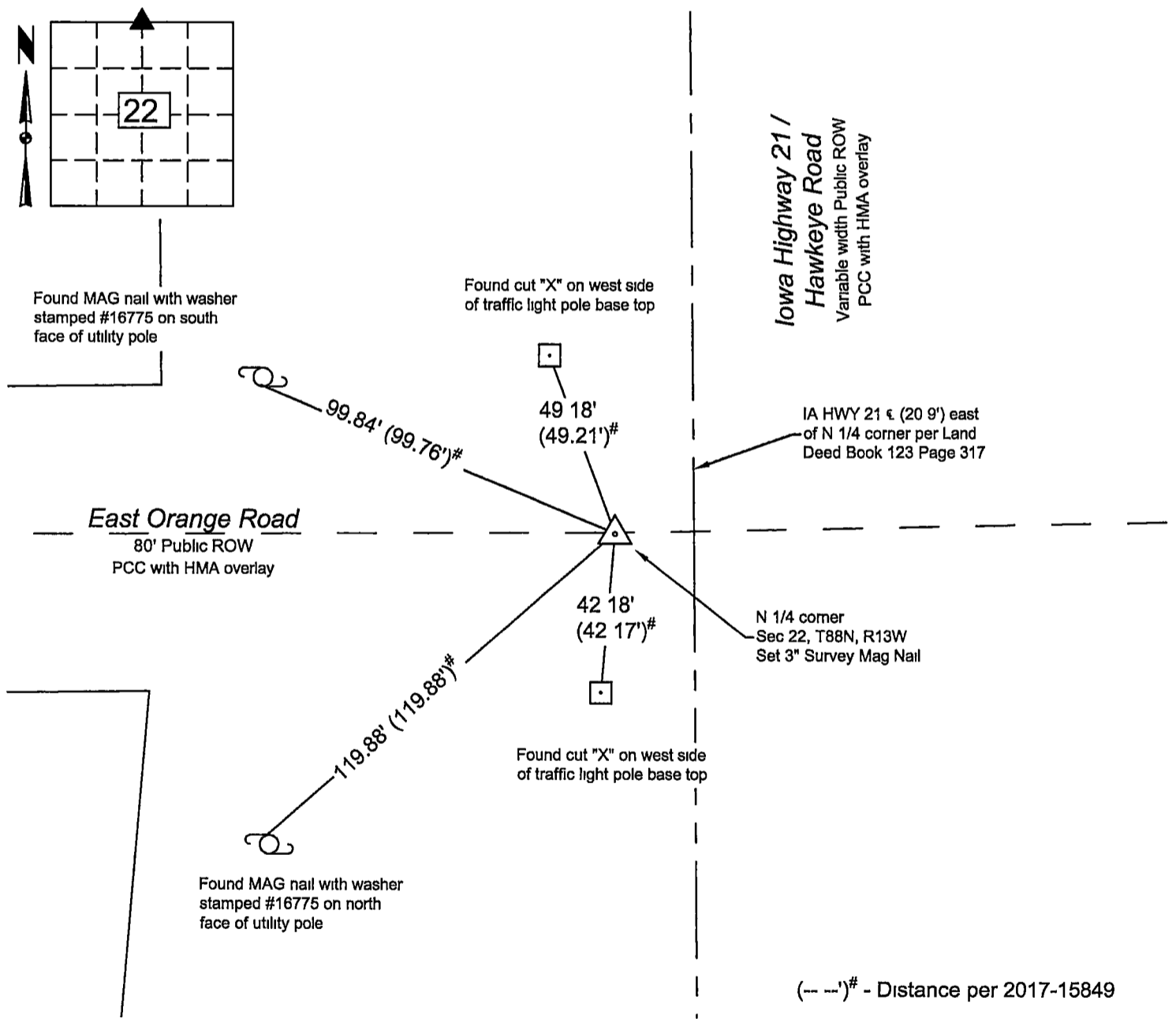
Previously recorded in Doc No 2017-15849 in the Black Hawk County Recorder's Office

Reason for preparing this certificate, the evidence and detailed procedures used in establishing the corner position, and monumentation found or placed
 This corner certificate is being filed due to change in monument

Monument used for survey in the Northwest Quarter of Section 22-88-13 Previous corner tie called for a found PK nail in asphalt Went to location of corner and did not find called for nail but instead found a ~1" Ø hole in asphalt that, using previous ties, matched the location of the called for nail Set a 3-inch survey nail in asphalt in the hole and retied monument

PLAN VIEW

Show a minimum of three reference ties to durable physical objects, relevant monuments and physical conditions that will enable recovery of the corner



I hereby certify that this surveying document was prepared and the related survey work was performed by me or under my direct personal supervision and that I am a duly licensed Land Surveyor under the laws of the State of Iowa
William W. Castle 4/18/2025
 William W. Castle, PLS Date
 License Number 19715
 My License Renewal Date is December 31, 2025
 Pages or sheets covered by this seal ALL

List corners to be indexed			
Corners	Section	Twp	Range
N 1/4	22	88	13

City of Waterloo Engineering Department
 715 Mulberry Street, Waterloo, Iowa 50703
 Phone (319) 291-4312 Fax: (319) 291-4262

Drawn By: WWC Scale: 1" = 40'
 Field Work Date: 4-15-2025
 Date Drawn 4-18-2025

Sheet No
1 of 1