



Doc ID: 007599100001 Type: GEN  
Recorded: 04/12/2017 at 02:05:05 PM  
Fee Amt: \$7.00 Page 1 of 1  
Black Hawk County Iowa  
SANDIE L. SMITH RECORDER

File 2017-00017826

Reserved for County Recorder's use.

Kyle J. Helland, 1107 Technology Parkway, Cedar Falls, Iowa 50613-6951, (319)-266-0161

UNITED STATES PUBLIC LAND SURVEY CORNER CERTIFICATE  
OF

LAND SURVEY MONUMENTS SITUATED IN SECTION NO. 22, TOWNSHIP NO. 88 NORTH, RANGE  
NO. 13 WEST OF THE FIFTH PRINCIPAL MERIDIAN, BLACK HAWK COUNTY, IOWA.  
PREVIOUSLY RECORDED IN FILE 2011-00003528.

(SHOW REASON FOR PREPARING THIS CERTIFICATE, THE EVIDENCE AND DETAILED PROCEDURES USED IN ESTABLISHING THE  
CORNER POSITIONS AND MONUMENTATION FOUND OR PLACED.)

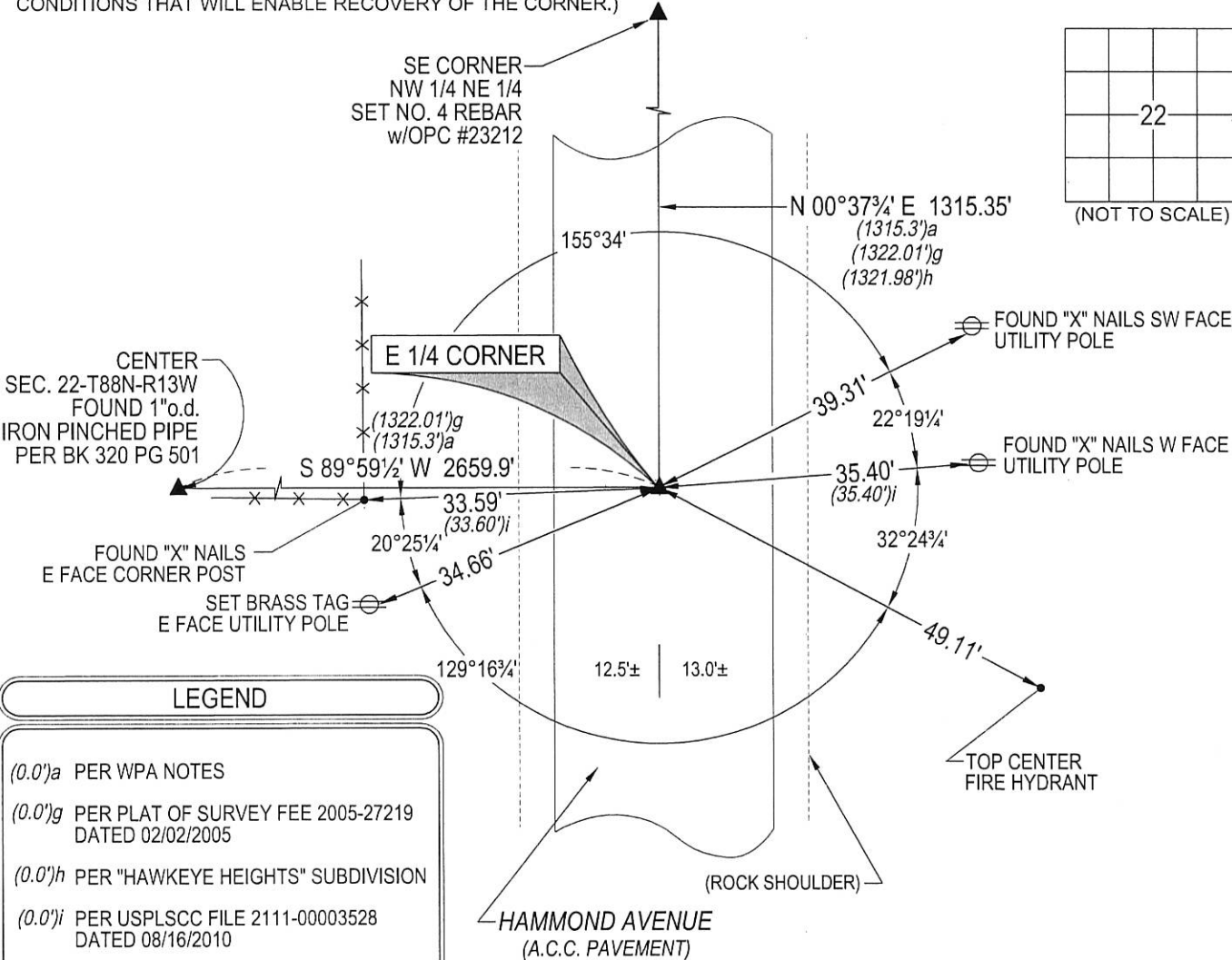
MONUMENT DESCRIPTION AND REMARKS:

USPLSCC FILE 2011-00003528 REFERENCE TIES & MONUMENTATION HAVE CHANGED. SURVEY COMPLETED IN  
THE NE 1/4 OF SEC. 22-T88N-R13W.

→ **E1/4 CORNER:** WPA NOTES DATED 10/29/1941 CALLS FOR [C.M. 1.4' E OF R.L.]. PLAT OF SURVEY FEE BOOK  
#2005 27219 DATED 02/02/2005 CALLS FOR [F. CONC./ MONUM.]. USPLSCC FILE NO. 2011-00003528 CALLS FOR  
[FND. S.C.M./BRASS CAP IN CENTER OF HAMMOND AVENUE, 7" BELOW SURFACE]. ACQUISITION PLAT FILE NO.  
2013-00013815 DATED 12/17/2012 CALLS FOR [FND. PK NAIL w/WASHER]. SEARCHED AREA, FOUND "MAG" NAIL  
w/WASHER IN A.C.C. PAVEMENT.

PLAN VIEW

(SHOW A MINIMUM OF THREE REFERENCE TIES TO DURABLE PHYSICAL OBJECTS, RELEVANT MONUMENTS AND PHYSICAL  
CONDITIONS THAT WILL ENABLE RECOVERY OF THE CORNER.)



LEGEND

- (0.0')a PER WPA NOTES
- (0.0')g PER PLAT OF SURVEY FEE 2005-27219 DATED 02/02/2005
- (0.0')h PER "HAWKEYE HEIGHTS" SUBDIVISION
- (0.0')i PER USPLSCC FILE 2111-00003528 DATED 08/16/2010

(BEARINGS ARE ASSUMED)



HELLAND ENGINEERING & SURVEYING, LTD.  
1107 Technology Parkway  
Cedar Falls, Iowa 50613-6951  
(319)-266-0161

SHINER = 8d. NAIL & 1 5/16"Ø METAL SHINER DRAWN BY: SMN  
BRASS TAG = 8d. NAIL & 13/16"Ø BRASS TAG  
OPC = PLASTIC CAP (O=ORANGE, R=RED, Y=YELLOW)  
(00') RECORDED AS FILE NAME: 17-122-22.DWG



I hereby certify that this land surveying document was prepared  
and the related survey work was performed by me or under my  
direct personal supervision and that I am a duly licensed  
Professional Land Surveyor under the laws of the State of Iowa.  
Kyle J. Helland 4/3/17  
License Number 23212  
My license renewal date is December 31, 2017.  
All pages or sheets are covered by this seal except:

LIST CORNERS TO BE INDEXED			
CORNER	SECTION	TOWNSHIP	RANGE
E 1/4 CORNER	22	88N	13W
W 1/4 CORNER	23	88N	13W