

Reserved for County Recorder's use.

Kyle J. Helland, 1107 Technology Parkway, Cedar Falls, Iowa 50613-6951, (319)-266-0161

UNITED STATES PUBLIC LAND SURVEY CORNER CERTIFICATE  
OF

LAND SURVEY MONUMENTS SITUATED IN SECTION NO. 22, TOWNSHIP NO. 88 NORTH, RANGE  
NO. 13 WEST OF THE FIFTH PRINCIPAL MERIDIAN, BLACK HAWK COUNTY, IOWA.  
PREVIOUSLY RECORDED IN N/A.

(SHOW REASON FOR PREPARING THIS CERTIFICATE, THE EVIDENCE AND DETAILED PROCEDURES USED IN ESTABLISHING THE  
CORNER POSITIONS AND MONUMENTATION FOUND OR PLACED.)

MONUMENT DESCRIPTION AND REMARKS:

NO USPLSCC ON FILE. SURVEY COMPLETED IN THE NE 1/4 OF SEC. 22-T88N-R13W.

NE CORNER OF SE 1/4 NW 1/4: NO BLACK HAWK COUNTY ENGINEER REFERENCE TIES AVAILABLE.

HAWKEYE HEIGHTS SUBDIVISION, DATED 06/20/1990 SHOWS A CORNER BEING SET AT THEORETICAL  
MIDPOINT BETWEEN THE N 1/2 CORNER AND THE CENTER OF SECTION, SAID POINT IS SHOWN ON SAID  
PLAT TO BE 4.53' NORTH OF AN EXTENSION OF AN EXISTING FENCE LINE. PRIOR TO THIS CORNER BEING  
SET, IOWA DOT CONSTRUCTION PLANS OF HIGHWAY #21, PROJECT #1091, DATED 01/30/1964, DOES NOT  
SHOW A PROPERTY CORNER FOUND OR SET, BUT SHOWS STATIONING TO THE EXISTING BOUNDARY  
LINE BETWEEN THE N 1/2 OF THE NE 1/4 AND THE S 1/2 OF THE NE 1/4 WHICH DOES NOT FALL AT SAID  
MIDPOINT BUT SOUTH OF MIDPOINT. FOUND A 1"Ø PINCH PIPE, PER HAWKEYE HEIGHTS SUBDIVISION, AT  
MIDPOINT BETWEEN THE N 1/4 CORNER AND THE CENTER APPROXIMATELY 4'± NORTH OF THE  
EXTENSION OF AN EXISTING 1/4" FENCE LINE TO THE EAST. HOWEVER, IN CONTRADICTING EVIDENCE OF  
THE SAID PINCH PIPE, A FOUND IDOT RAIL (LEANING NORTHWESTERLY) AT THE EASTERLY ROW LINE IN  
LINE WITH SAID FENCE LINE RUNNING EASTERLY, BELIEVED TO HAVE BEEN SET AFTER THE  
CONSTRUCTION OF HIGHWAY #21 IN THE 1960'S AND PRIOR TO HAWKEYE HEIGHTS SUBDIVISION. AERIAL  
PHOTOS DATING BACK TO THE 1930'S SHOW THE FENCE LINE IN PLACE. BASED ON THE CONTRADICTING  
EVIDENCE, SEARCHED AREA ON A LINE WITH THE N 1/4 CORNER AND THE CENTER AND IN LINE WITH THE  
EXTENSION OF THE FENCE LINE EAST AND IDOT RAIL AND FOUND A BLUE GRANITE STONE 6"E-W X 6"N-S  
(TOP VIEW) 0.9' DEEP. THE PRORATION OF THE IDOT STATIONING, PER SAID PLANS, SUBSTANTIATE THE  
STONE WITHIN REASON. UTILIZED SAID GRANITE STONE AS THE MONUMENT FOR THE CORNER AS IT  
CORRESPONDS TO EXISTING EVIDENCE. CUT "X" ON TOP OF SAID STONE.



HELLAND ENGINEERING & SURVEYING, LTD.  
1107 Technology Parkway  
Cedar Falls, Iowa 50613-6951  
(319)-266-0161

SHEET 1 OF 2

SHINER = 8d. NAIL & 1 5/16"Ø METAL SHINER DRAWN BY: SMN  
BRASS TAG = 8d. NAIL & 13/16"Ø BRASS TAG  
OPC = PLASTIC CAP (O=ORANGE, R=RED, Y=YELLOW)  
(00') RECORDED AS FILE NAME: 17-122-34.DWG



I hereby certify that this land surveying document was prepared  
and the related survey work was performed by me or under my  
direct personal supervision and that I am a duly licensed  
Professional Land Surveyor under the laws of the State of Iowa.

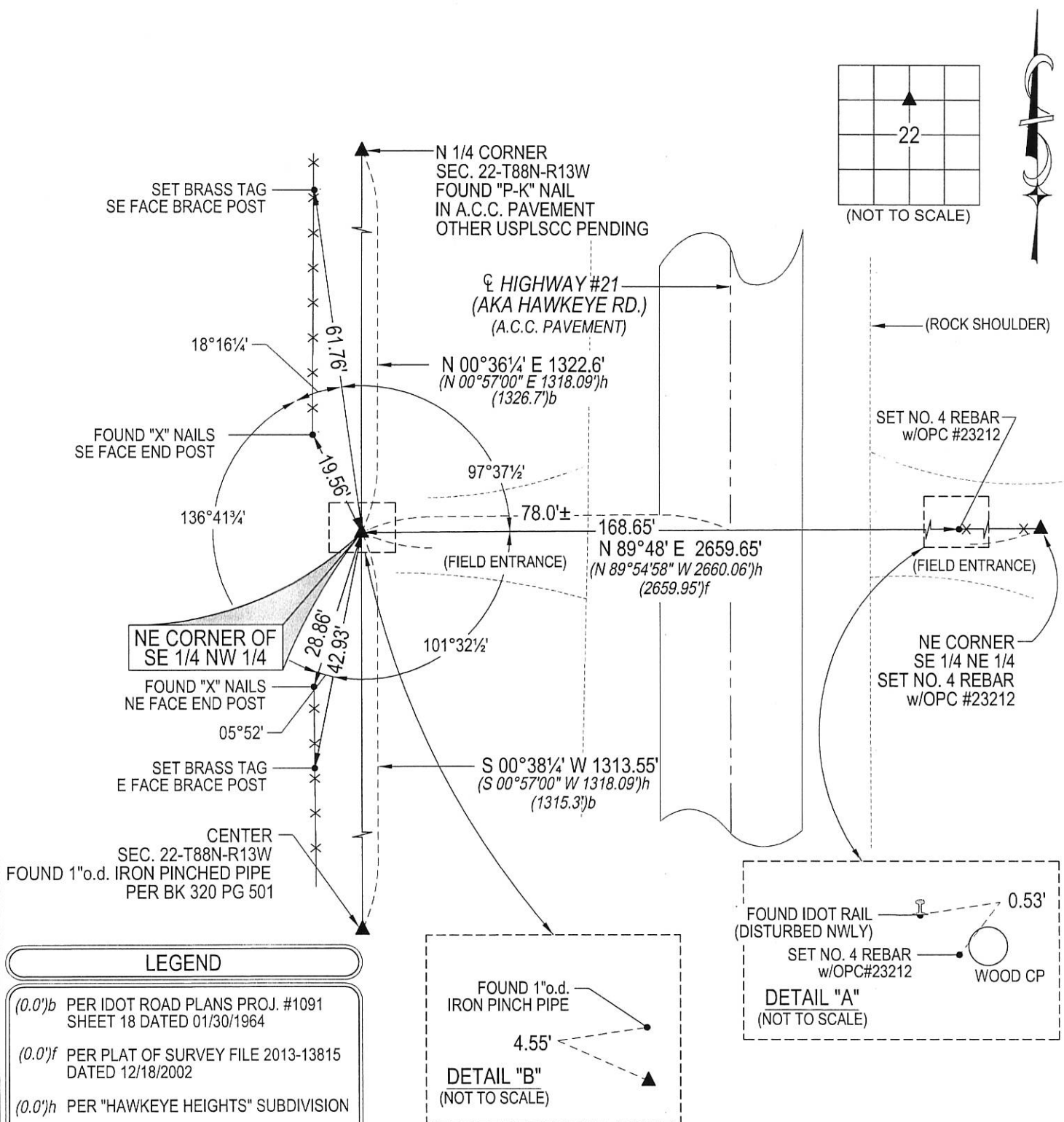
Kyle J. Helland  
License Number 23212  
My license renewal date is December 31, 2017.  
All pages or sheets are covered by this seal except:

LIST CORNERS TO BE INDEXED

| CORNER                | SECTION | TOWNSHIP | RANGE |
|-----------------------|---------|----------|-------|
| NE COR. SE 1/4 NW 1/4 | 22      | 88N      | 13W   |
| SE COR. NE 1/4 NW 1/4 | 22      | 88N      | 13W   |
| SW COR. NW 1/4 NE 1/4 | 22      | 88N      | 13W   |
| NW COR. SW 1/4 NE 1/4 | 22      | 88N      | 13W   |

# PLAN VIEW

(SHOW A MINIMUM OF THREE REFERENCE TIES TO DURABLE PHYSICAL OBJECTS, RELEVANT MONUMENTS AND PHYSICAL CONDITIONS THAT WILL ENABLE RECOVERY OF THE CORNER.)



**HELLAND ENGINEERING & SURVEYING, LTD.**  
1107 Technology Parkway  
Cedar Falls, Iowa 50613-6951  
(319)-266-0161

SHEET 2 OF 2

SHINER = 8d. NAIL & 1 5/16"Ø METAL SHINER  
BRASS TAG = 8d. NAIL & 13/16"Ø BRASS TAG  
OPC = PLASTIC CAP (O=ORANGE, R=RED, Y=YELLOW)  
(00') RECORDED AS FILE NAME: 17-122-34.DWG

## LIST CORNERS TO BE INDEXED

| CORNER            | SECTION | TOWNSHIP | RANGE |
|-------------------|---------|----------|-------|
| NE COR. SE ¼ NW ¼ | 22      | 88N      | 13W   |
| SE COR. NE ¼ NW ¼ | 22      | 88N      | 13W   |
| SW COR. NW ¼ NE ¼ | 22      | 88N      | 13W   |
| NW COR. SW ¼ NE ¼ | 22      | 88N      | 13W   |