

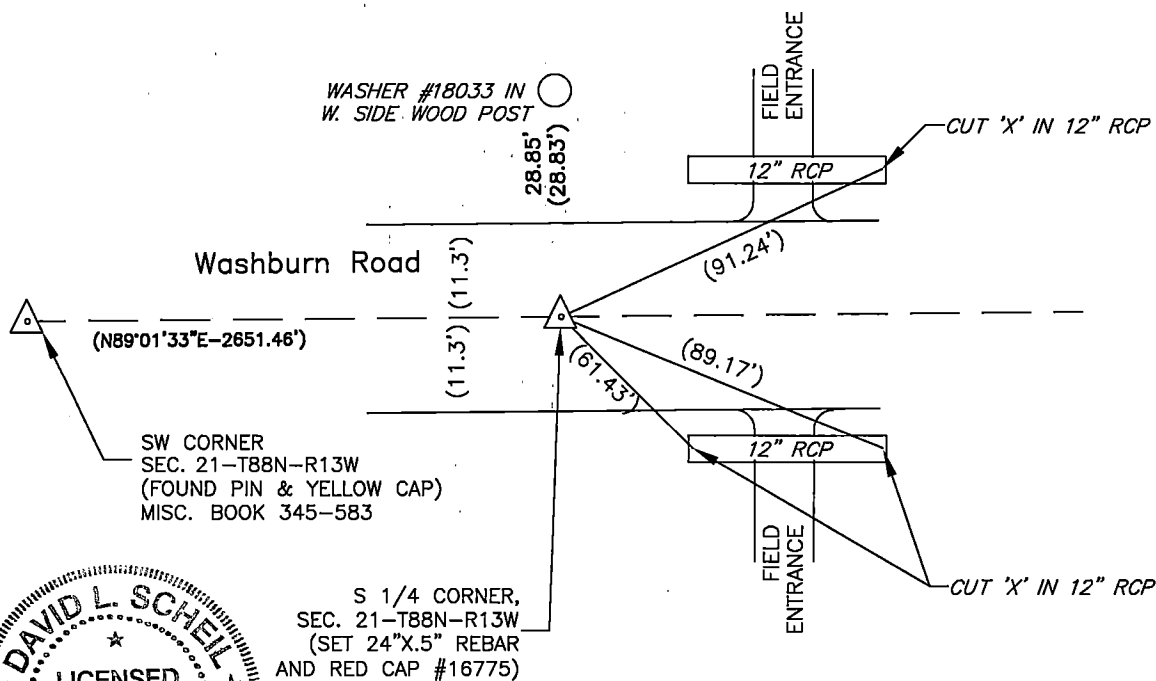
File **2022-00021264**

ENV

PHONE: (VOICE) 319-235-6294
(FAX) 319-235-0028

Went to location of corner and found pin & yellow cap as per above certificate. Set 0.5" rebar and cap #16775 above found pin and yellow cap.

A 3x3 grid with a dot at the bottom center and the number 21 in the middle cell.



Iowa State Plane Coordinate System
(North Zone, 2011 Adj.)
N= 3615949.9
E= 5227202.2
(for location purposes only)

SEAL

| Corners | Section | Twp | Range |
|---------------|---------|------|-------|
| S 1/4 CORNER, | 21 | 88 N | 13 W |
| N 1/4 CORNER, | 28 | 88 N | 13 W |

(7)